



Sea Mills - Offers over £625,000

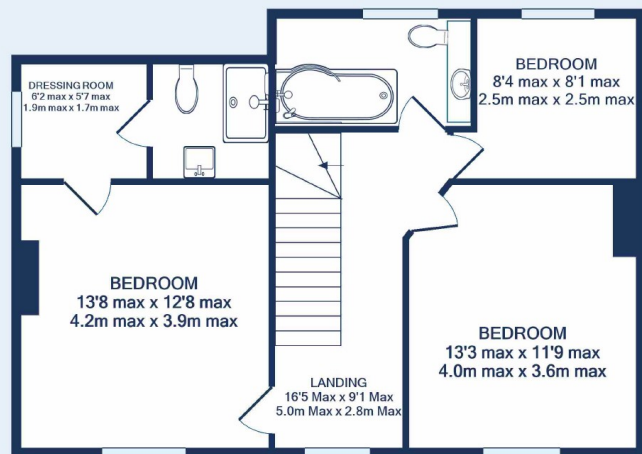
3 bed detached house

222 Shirehampton Road, BS9 2EH





GROUND FLOOR



1ST FLOOR

Made with Metropix ©2021



A simply beautiful double fronted detached home in an elevated position overlooking Shirehampton Park Golf course. Built circa 1930's this wonderful home offers a mixture of character of the period with a subtle mixture of contemporary styled accommodation consisting an impressive entrance hall, lounge with bay windows and french doors, dining room with bay window, kitchen/breakfast room, utility room, downstairs cloakroom, a beautiful light first floor landing leading to master bedroom with walk in wardrobe and en-suite shower room, two further bedrooms and family bathroom.

Externally this fantastic home benefits from front and rear gardens, off street parking for several cars and a detached garage.

Highly popular location with Kings Weston House and Blaise Castle Estates close at hand and local shops and bus routes near by.

An early viewing is recommended to fully appreciate this lovely home, which is offered with no onward chain.



Shirehampton Office

14-16 High Street, Shirehampton, Bristol, BS11 0DP

Call: 0117 9380611

Mail:

Search: oceanhome.co.uk

References to the Tenure of a Property are based on information supplied by the Seller. The Agent has not had sight of the title documents. Lease details, service ground rent (where applicable) are given as a guide only and should be checked and confirmed by your solicitor prior to exchange of contracts.