



ORCHARDS

CHERRY TREE WAY
AMPHILL

18 CHERRY TREE WAY
AMPTHILL
MK45 2SY





Sold with no onward chain is this recently refurbished two bedroom house which benefited from a new kitchen and bathroom installed and redecorated throughout in the last 12 months.

The accommodation briefly consists of;

Ground floor there is an entrance hall with storage, a bay fronted lounge and newly refurbished kitchen.

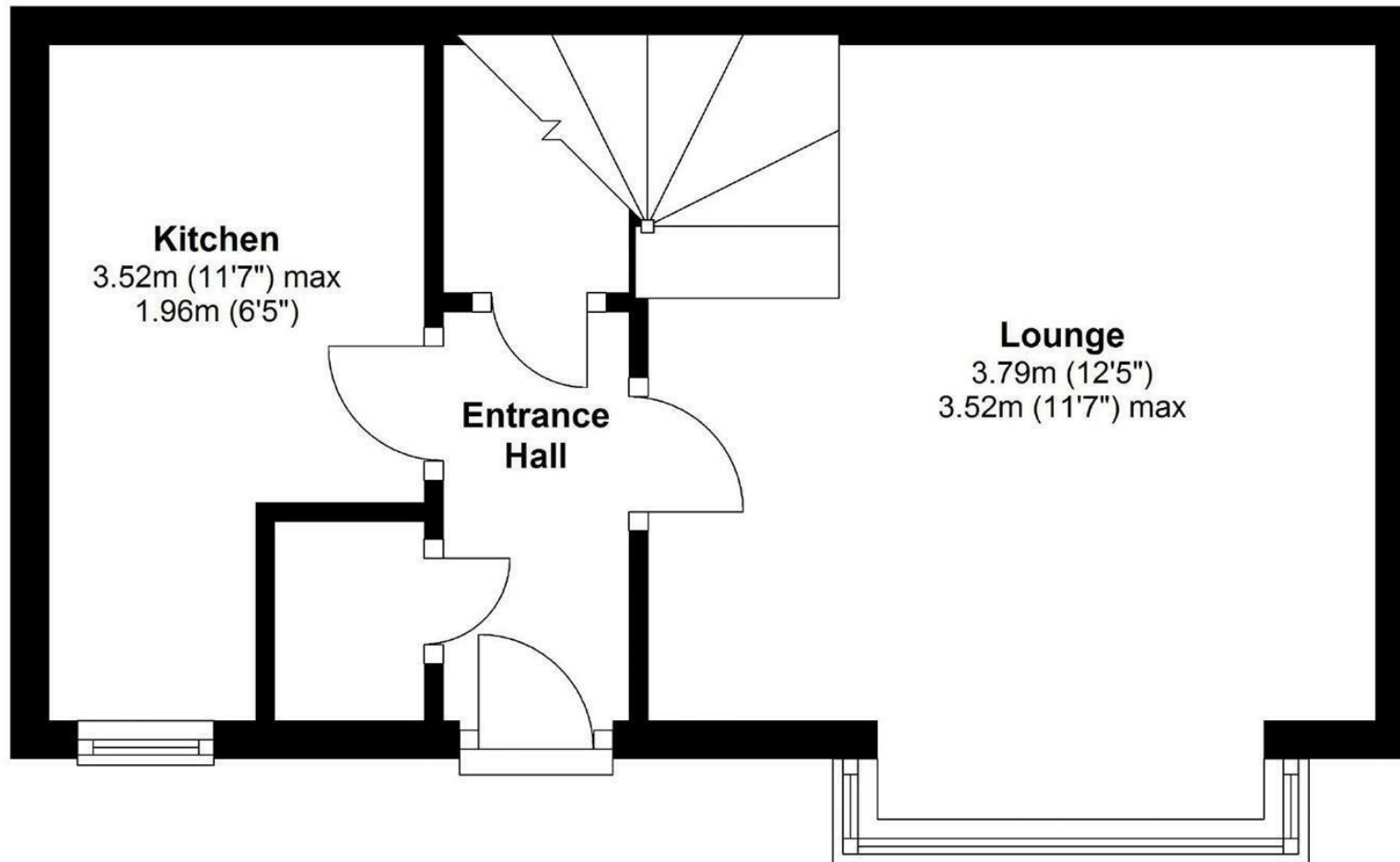
The first floor, offers two bedrooms and a newly refitted shower room.

The property comes with allocated parking, small front garden, gas central heating and double glazing.



Ground Floor

Approx. 25.4 sq. metres (273.2 sq. feet)



Total area: approx. 50.0 sq. metres (538.4 sq. feet)