

CHARLES ORLEBAR

Estate Agents & Auctioneers



Yielden Methodist Chapel Spring Lane

, Yielden, MK44 1AT

Asking Price £115,000

Charles Orlebar presents - A development opportunity to convert (subject to planning) the existing former Methodist Chapel in this popular North Bedfordshire village. With the potential to create a one bedroom property or some office space (subject to the normal permissions), the existing building could also be used for a yoga studio or even a storage facility. To find out more, or to book a viewing - please call George or Lucy on the number above.

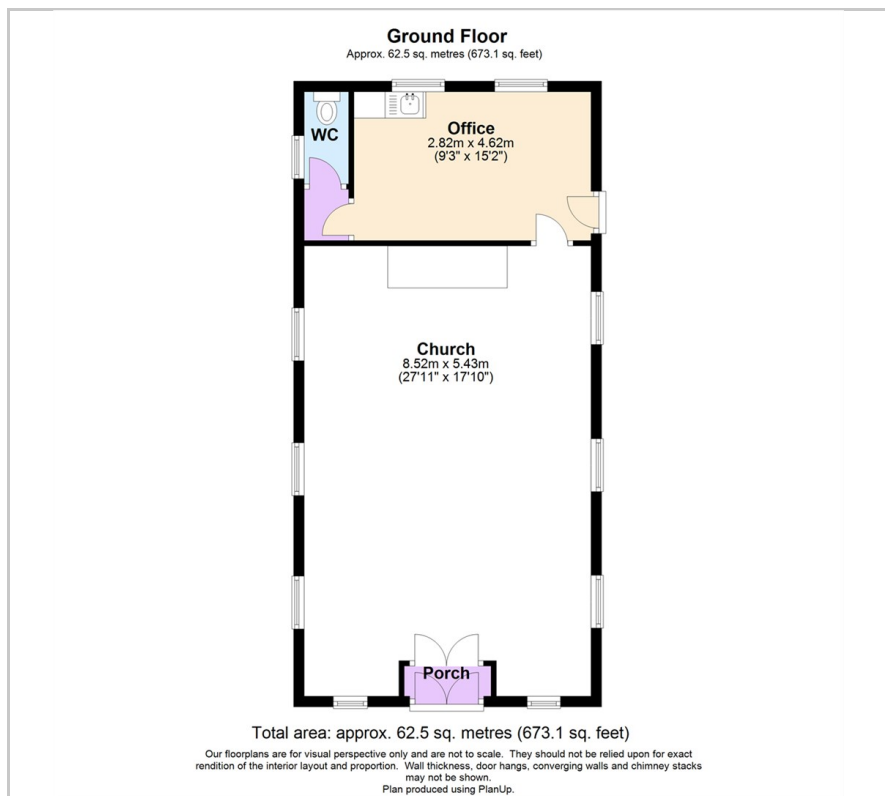
- No chain
- Conditional offers welcome
- Potential for conversion subject to permissions
- Village location
- Electric heating
- Commercial EPC Value - D 100

Viewing

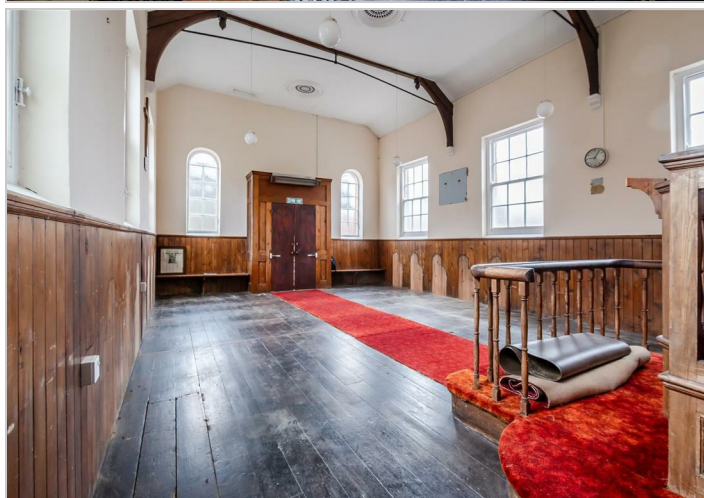
Please contact our Sales Office on 01933313600 if you wish to arrange a viewing appointment for this property or require further information.



Floor Plan



Area Map



These particulars, whilst believed to be accurate are set out as a general outline only for guidance and do not constitute any part of an offer or contract. Intending purchasers should not rely on them as statements of representation of fact, but must satisfy themselves by inspection or otherwise as to their accuracy. No person in this firm's employment has the authority to make or give any representation or warranty in respect of the property.