



11 Sugden House Stockwell Street Leek



Estate Agents. Valuers. Auctioneers. Chartered Surveyors
Part of the Bagshaws Partnership

11 Sugden House Stockwell Street

Leek
Staffordshire
ST13 6DH

- * A spacious two bedroomed first floor apartment situated in this magnificent building, located in the centre of Leek.
- * The property is located in a highly convenient position for all town centre shops, amenities and schools.
- * This apartment briefly comprises: Entrance Hall, Shower Room, Living Room with Kitchen Area, Two Bedrooms and Bathroom.
- * Allocated parking with the property.
- * Viewing highly recommended.
- * The property is currently let at £460 PCM.
- * Tenure - Leasehold - 150 years from 1 August 2005.



Asking Price £125,000



2



1



1



C



Leek - 01538 383344



leek@buryandhilton.co.uk





General Information

Entrance Hall

Stairs off. Airing cupboard. Electric heater.

Living Room 14'10 x 10'2 (4.52m x 3.10m)

Electric heater.

Kitchen Area 9'7 x 9'1 (2.92m x 2.77m)

Wall and base units. Stainless steel sink unit with drainer, rinser bowl and mixer tap. Electric hob and oven with extractor unit above. Electric heater. Integrated fridge, freezer and dishwasher. Plumbing point.

Shower Room 7'1 x 4'8 (2.16m x 1.42m)

Shower cubicle. W.c. Wash basin. Electric heater.

Bedroom 9'7 x 9'1 (2.92m x 2.77m)

Electric heater.

Bedroom 14'10 x 13'5 (4.52m x 4.09m)

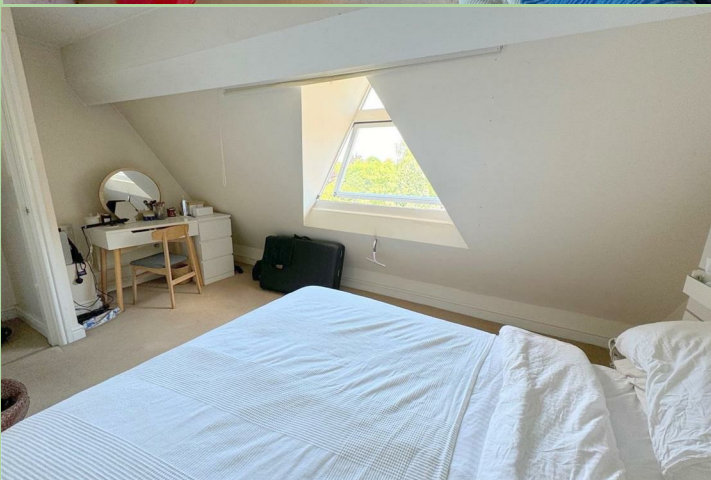
Window to rear. Eaves storage.

Bathroom 10'3 x 8'8 (3.12m x 2.64m)

Bath. W.c. Wash basin. Electric heater.

Outside

Allocated parking space.



Agents Notes

Bury & Hilton have made every reasonable effort to ensure these details offer an accurate and fair description of the property. The particulars are produced in good faith, for guidance only and do not constitute or form an offer or part of the contract for sale. Bury & Hilton and their employees are not authorised to give any warranties or representations in relation to the sale and give notice that all plans, measurements, distances, areas and any other details referred to are approximate and based on information available at the time of printing.



6 Market Street, Leek, Staffordshire, ST13 6HZ

T : 01538 383344

E : leek@buryandhilton.co.uk

www.buryandhilton.co.uk

Part of the Bagshaws Partnership

Offices in:

Ashbourne	01335 342201
Bakewell	01629 812777
Buxton	01298 27524
Leek	01538 383344
Penkridge	01785 716600
Uttoxeter	01889 562811