



Panorama,

Gravelly Bank, Light Oaks



Estate Agents. Valuers. Auctioneers. Chartered Surveyors
Part of the Bagshaws Partnership

Panorama

Gravelly Bank

Light Oaks, Stoke on Trent

ST3 7EG

- ◆ An exciting development opportunity to purchase a plot of land amounting to 0.8 acres with planning approval granted on the 16th December 2022, for the erection of 5 detached dwellings.
- ◆ Located in the popular area of Lightwood, the site is nestled on the western side of Gravelly Bank and takes in some fantastic countryside views, once concluded, the development will consist of 5, 4/5-bedroom detached family homes.
- ◆ Plots 1, 2 and 3 will be laid out in a linear arrangement along the site frontage and will have individual accesses from Gravelly Bank. The 3 identical properties will be 4-bedroom detached units, with integral garage, driveway, front and rear garden.
- ◆ Plots 4 and 5 are located at right angles to the other 3 plots, at the rear of the site. These 2 properties will be served via a private road to the north eastern corner of the site. Plot 4 is a 5-bedroom detached dwelling and the accommodation will be laid out over 2 floors. Externally a driveway, garden to the side/rear.
- ◆ Plot 5 is a 4-bedroom detached dwelling and the accommodation will be laid out over 2 floors. Externally a driveway, garden to the side/rear and detached double garage.

* Planning approval 68012/RES *

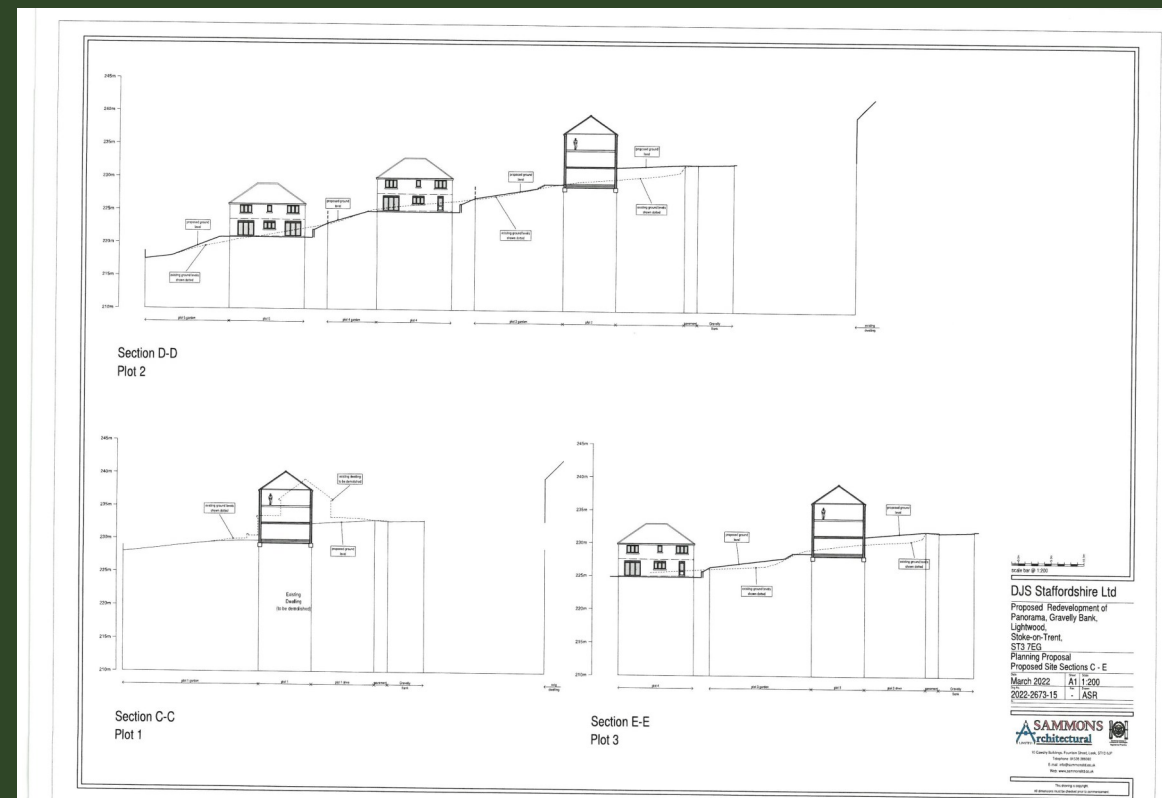
Offers in excess of: £400,000

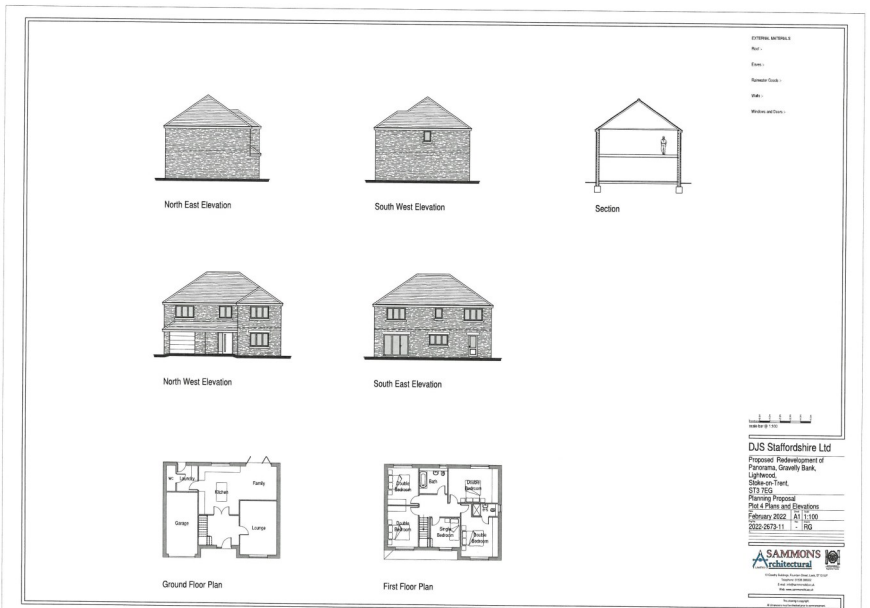
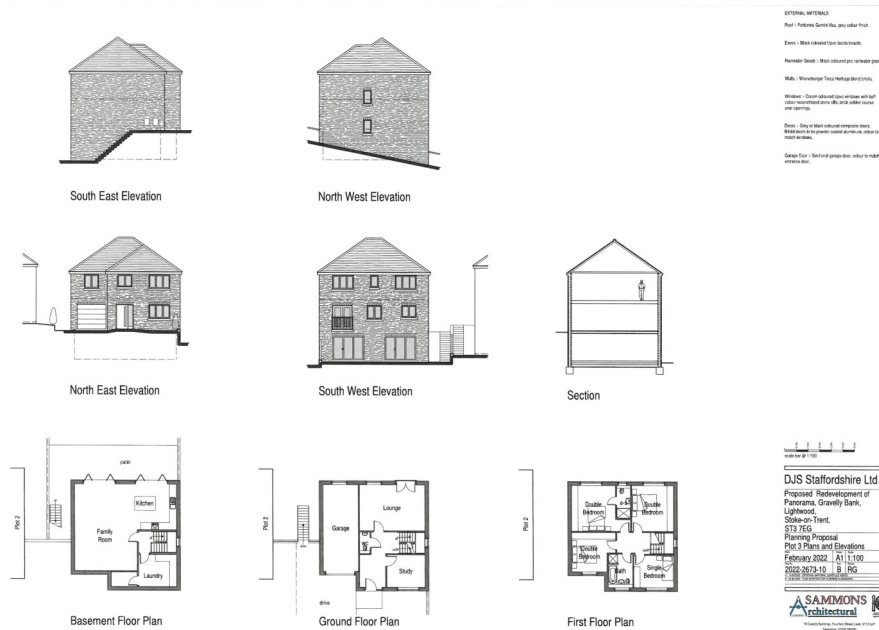
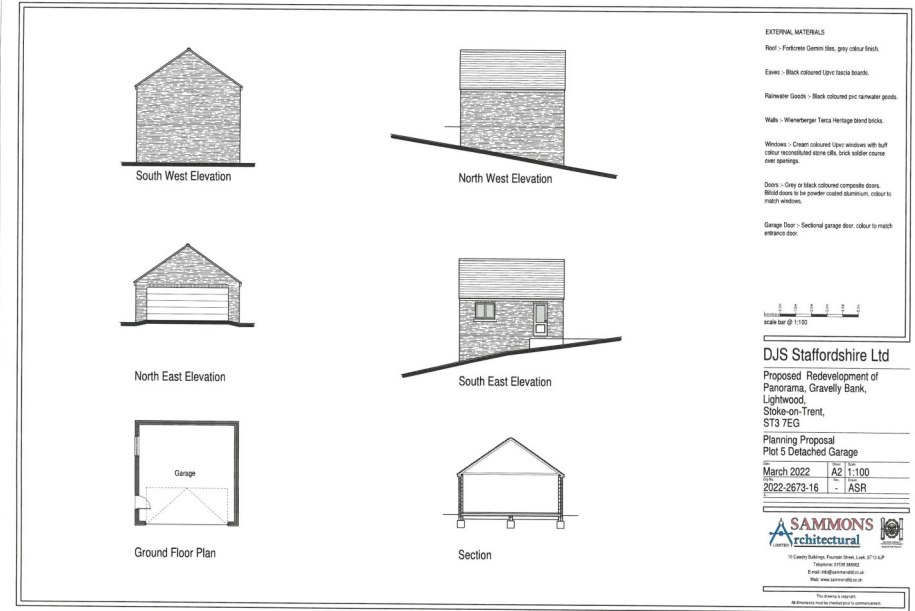
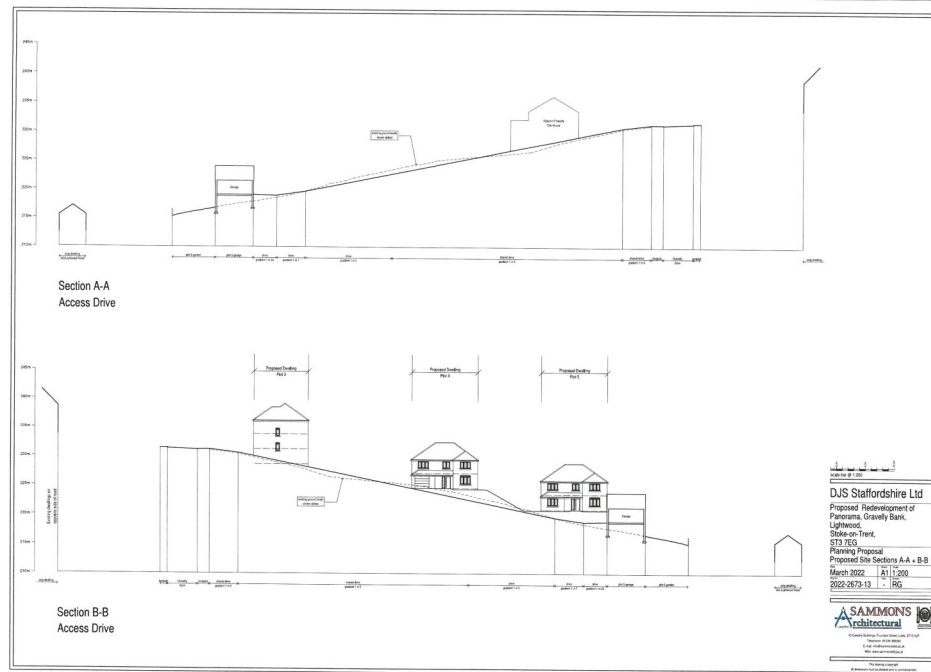


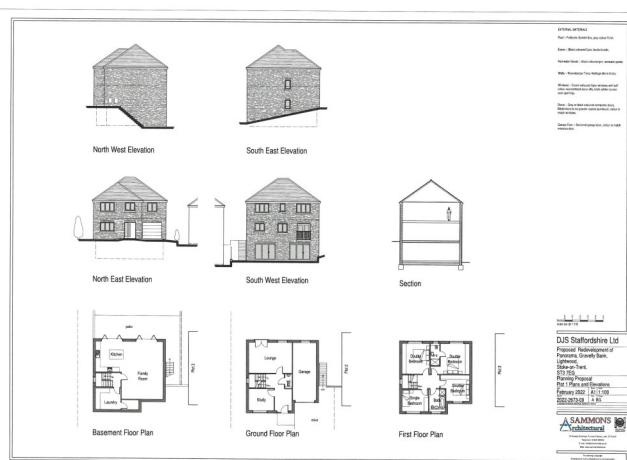
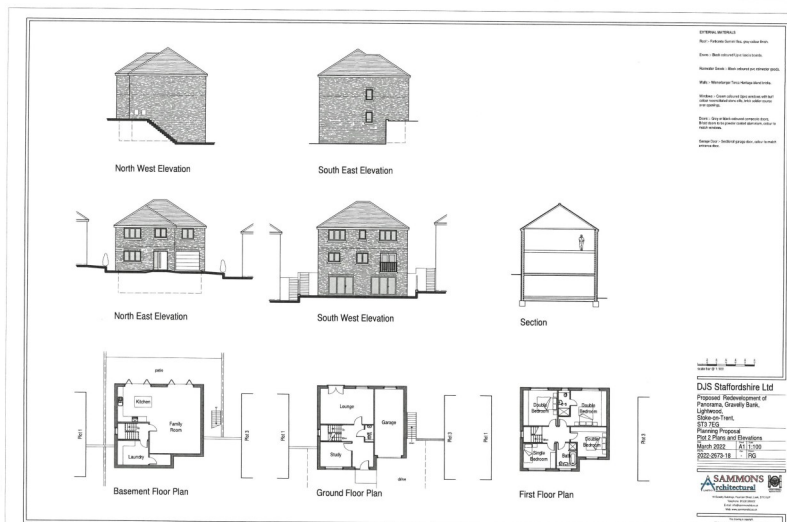
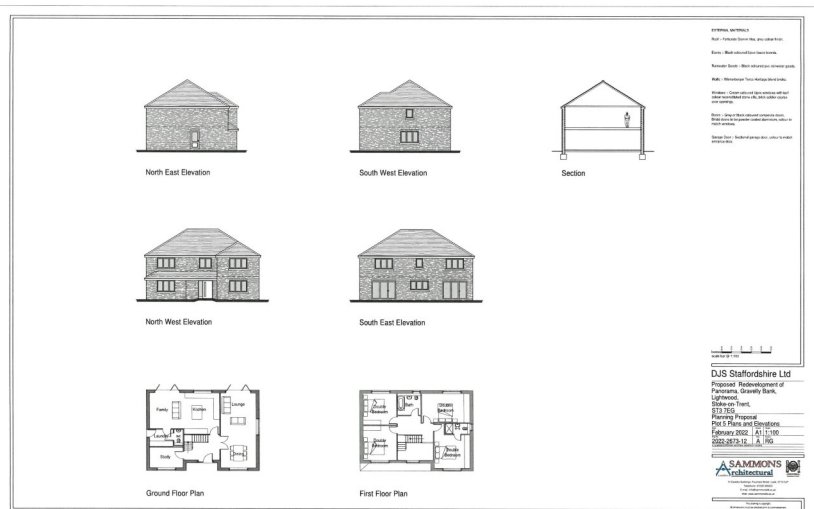
Leek Office - 01538 383344



leek@buryandhilton.co.uk







6 Market Street, Leek, Staffordshire, ST13 6HZ

T : 01538 383344

E : leek@buryandhilton.co.uk

www.buryandhilton.co.uk

Part of the Bagshaws Partnership



Offices in:

Ashbourne	01335 342201
Bakewell	01629 812777
Buxton	01298 27524
Leek	01538 383344
Penkridge	01785 716600
Uttoxeter	01889 562811

arla | propertymark



onTheMarket.com

rightmove

Zoopla