



HALTON KELLY
INDEPENDENT PROPERTY SERVICES



18 Cheltenham Close
Gt Sankey, Warrington WA5 3PX

Offers Around
£392,000

DETACHED house, Small CUL DE SAC, FOUR Bedrooms, EN SUITE facilities, Double Glazed CONSERVATORY, EXCELLENT plot, FREEHOLD Title, UPVC double glazing, REAR lounge, DONT MISS THIS!

Halton Kelly are pleased to offer for purchase this four bedroom, detached family home which is situated in a small cul de sac and we are informed this part of Cheltenham Close is a Private Road, for further information on this point, please speak directly with our clients. The property has En Suite facilities to the Master Bedroom and a lovely Conservatory, our vendor clients have also advised it is Freehold Title. An attractive home offering excellent family accommodation, briefly comprising open Porch, Entrance Hall with internal door giving access to the garage, which has a rear Utility space, ground floor W.C., a good sized Lounge, double doors to the Dining Room, fully fitted Kitchen, Landing, Master Bedroom with En suite, three further bedrooms and Family Bathroom. Please note there are drop down ladders to the loft access which has boarding and shelving.

Outside to the front is a double width driveway to single garage and there are well kept gardens with well established borders. The property has a private outlook to the front and is not overlooked. The rear garden is well fenced, mainly to lawn, with timber storage shed and there is a substantial patio area as can be seen by the photography.

Please call Halton Kelly for further information and viewing arrangements.

OPEN PORCH

Open Porch to front door with tiled flooring.



ENTRANCE HALL

Tiled flooring, access to ground floor W.C. and door to Garage.



GROUND FLOOR W.C

Two piece suite.



FAMILY LOUNGE

15'9 x 13'2 (4.80m x 4.01m)

Situated at the rear of the property, gas fire to surround and twin ceiling lights.



DINING ROOM

11'1 x 8'5 (3.38m x 2.57m)

With sliding patio doors to Conservatory.



KITCHEN

12'2 x 8'5 maximum (3.71m x 2.57m maximum)

Fitted with wall and base units, tiled floor to part tiled walls, 1.5 bowl drainer, four ring gas hob with overhead extractor, integral fridge/freezer, electric oven with separate grill, Logik dish washer (we are advised is 1 year old), plumbing for washing machine and external door to side of property.



CONSERVATORY

9'1 x 9'0 (2.77m x 2.74m)

Tiled flooring and double opening doors to patio area.



LANDING

Access to loft which is boarded in the middle and fitted with shelving, via drop down ladder.



MASTER BEDROOM

12'9 x 10'0 (3.89m x 3.05m)

Double bedroom with fully fitted integral robes and overhead storage.



EN SUITE

7'8 x 4'11 (2.34m x 1.50m)

Three piece shower suite and storage.



BEDROOM TWO

11'4 x 10'0 (3.45m x 3.05m)

Double bedroom.



BEDROOM THREE

10'2 x 11'9 maximum (3.10m x 3.58m maximum)
Double bedroom.



BEDROOM FOUR

7'10 x 6'11 (2.39m x 2.11m)
Single bedroom.



FAMILY BATHROOM

7'2 x 7'0 (2.18m x 2.13m)

Three piece suite which includes a P shaped bath with shower over and storage.



FRONT OUTLOOK FROM BEDROOM THREE



GARDEN

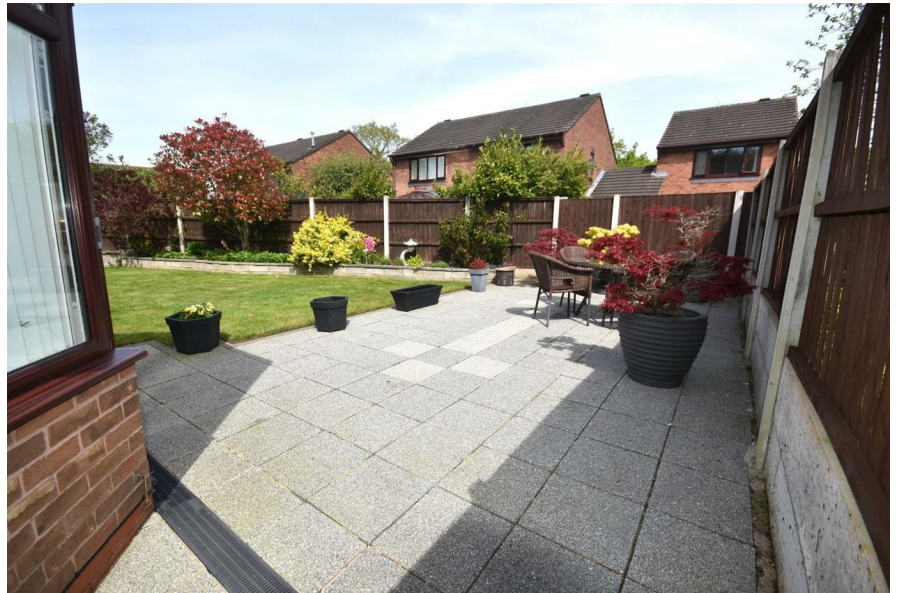
A well fenced garden, mainly to lawn with patio and pathway, raised brick beds, timber storage shed and outside light.



REAR ELEVATION



PATIO AREA

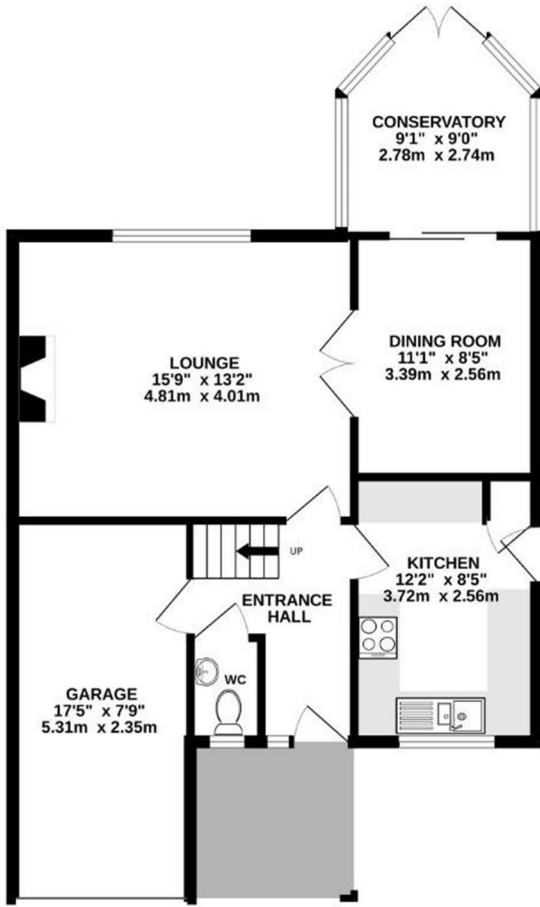


CUL DE SAC APPROACH

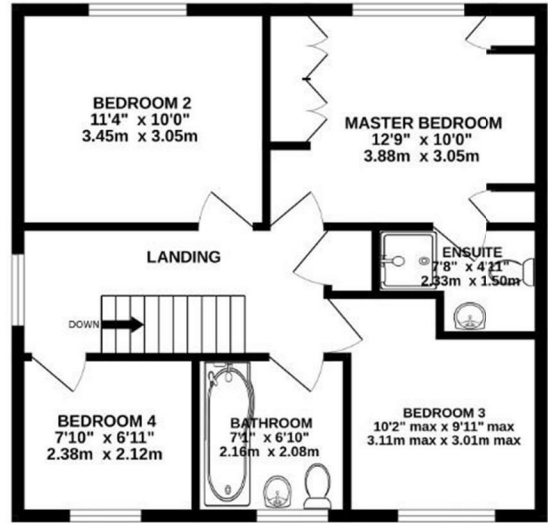
This photograph shows the view to the private cul de sac which provides ample parking for the three properties located there.



GROUND FLOOR
694 sq.ft. (64.4 sq.m.) approx.



1ST FLOOR
565 sq.ft. (52.5 sq.m.) approx.



TOTAL FLOOR AREA : 1258 sq.ft. (116.9 sq.m.) approx.

Whilst every attempt has been made to ensure the accuracy of the floorplan contained here, measurements of doors, windows, rooms and any other items are approximate and no responsibility is taken for any error, omission or mis-statement. This plan is for illustrative purposes only and should be used as such by any prospective purchaser. The services, systems and appliances shown have not been tested and no guarantee as to their operability or efficiency can be given.

Made with Metropix ©2024



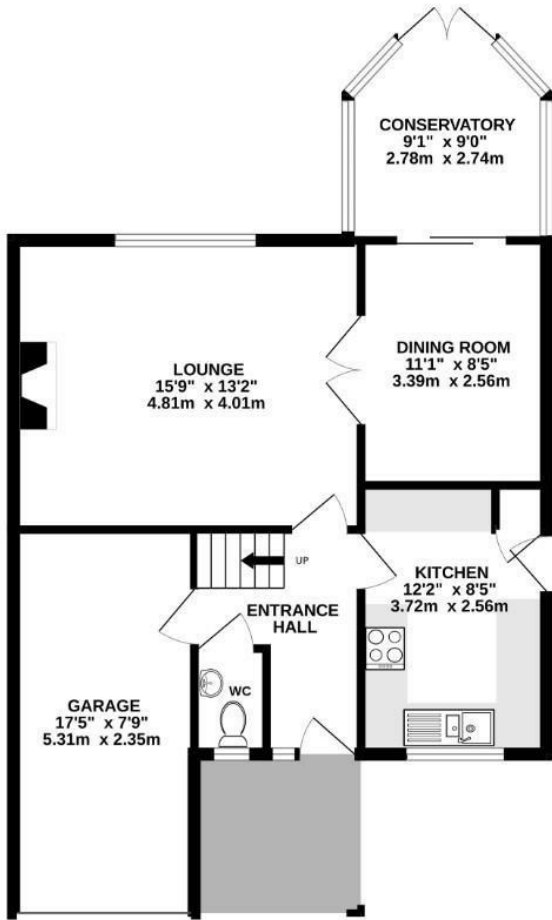
Energy Efficiency Rating

	Current	Potential
Very energy efficient - lower running costs		
(92 plus) A		
(81-91) B		
(69-80) C		
(55-68) D		
(39-54) E		
(21-38) F		
(1-20) G		
Not energy efficient - higher running costs		
	65	80
England & Wales	EU Directive 2002/91/EC	

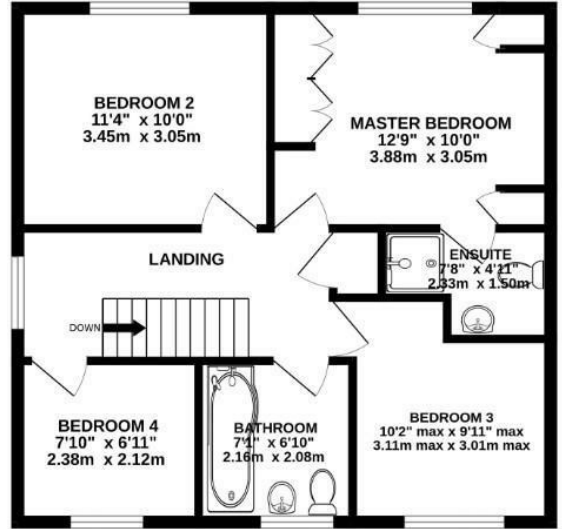
Environmental Impact (CO₂) Rating

	Current	Potential
Very environmentally friendly - lower CO ₂ emissions		
(92 plus) A		
(81-91) B		
(69-80) C		
(55-68) D		
(39-54) E		
(21-38) F		
(1-20) G		
Not environmentally friendly - higher CO ₂ emissions		
England & Wales	EU Directive 2002/91/EC	

GROUND FLOOR
694 sq.ft. (64.4 sq.m.) approx.

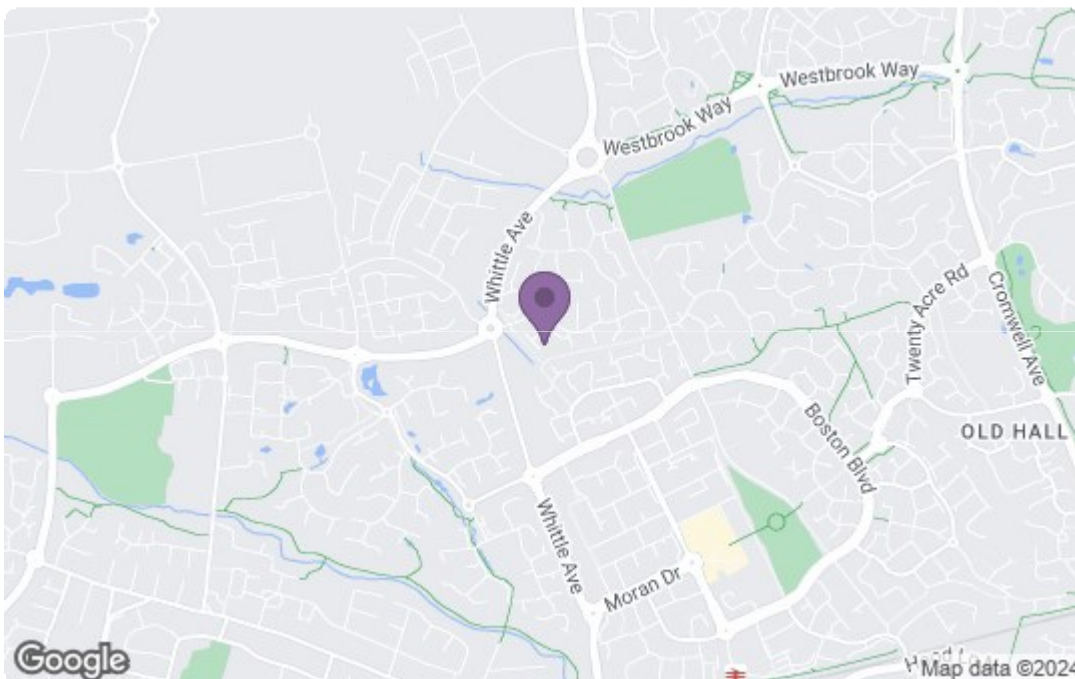


1ST FLOOR
565 sq.ft. (52.5 sq.m.) approx.



TOTAL FLOOR AREA: 1258 sq.ft. (116.9 sq.m.) approx.

Whilst every attempt has been made to ensure the accuracy of the floorplan contained here, measurements of doors, windows, rooms and any other items are approximate and no responsibility is taken for any error, omission or mis-statement. This plan is for illustrative purposes only and should be used as such by any prospective purchaser. The services, systems and appliances shown have not been tested and no guarantee as to their operability or efficiency can be given.
Made with Metropix ©2024



Energy Efficiency Rating		Current	Potential
Very energy efficient - lower running costs			
(92 plus) A			80
(81-91) B			
(69-80) C			
(55-68) D		65	
(39-54) E			
(21-38) F			
(1-20) G			
Not energy efficient - higher running costs			
England & Wales		EU Directive 2002/91/EC	
Environmental Impact (CO ₂) Rating		Current	Potential
Very environmentally friendly - lower CO ₂ emissions			
(92 plus) A			
(81-91) B			
(69-80) C			
(55-68) D			
(39-54) E			
(21-38) F			
(1-20) G			
Not environmentally friendly - higher CO ₂ emissions			
England & Wales		EU Directive 2002/91/EC	

For clarification, we wish to inform prospective purchasers that we have not carried out a detailed survey, nor tested the services, appliances and specific fittings for this property. All measurements and floor plans provided are approximate and for guidance purposes only. The particulars are set out as a general outline only for the guidance of intending purchasers or lessees, and do not constitute any part of an offer or contract. All descriptions, dimensions, references to condition and necessary permissions for use and occupation, and other details are given in good faith and are believed to be correct and any intending purchaser or tenant should not rely on them as statements or representations of fact but must satisfy themselves by inspection or otherwise as to the correctness of each of them. No person in the firm's employment Ltd has any authority to make or give any representation or warranty whatever in relation to this property. If there is any point which is of particular importance to you, please contact the office and we will be pleased to check the information, particularly if you contemplate travelling some distance.