



## Woolpack Court, High Street, Cheshunt, EN8 0BP

This THREE BEDROOM end of terrace property in the heart of CENTRAL CHESHUNT is beautifully presented throughout and benefits from a well-appointed kitchen and separate dining area, superb family bathroom and off-street parking. With gas central heating and double-glazed windows throughout.

### Key features

- Three Bedrooms
- End Of Terrace
- Well Presented Throughout
- Short Walk To Station
- Off Street Parking
- Heart Of Cheshunt
- Double Glazed Windows
- Gas Central Heating

### Property Information

Tenure  
Freehold

Council Tax  
D

EPC Rating  
C

Local Authority  
Broxbourne Borough Council



**Paul Wallace Estate Agents**  
Brookfield Centre  
Cheshunt  
Hertfordshire  
EN8 0NN



01992 781100



cheshunt@paulwallace.co.uk



www.paulwallace.co.uk



**Opening Times**

Mon - Fri	9 am to 6:30 pm
Sat	9 am to 5:30 pm
Sun	Closed
Bank Hols	Closed

**paulwallace**  
estate agents

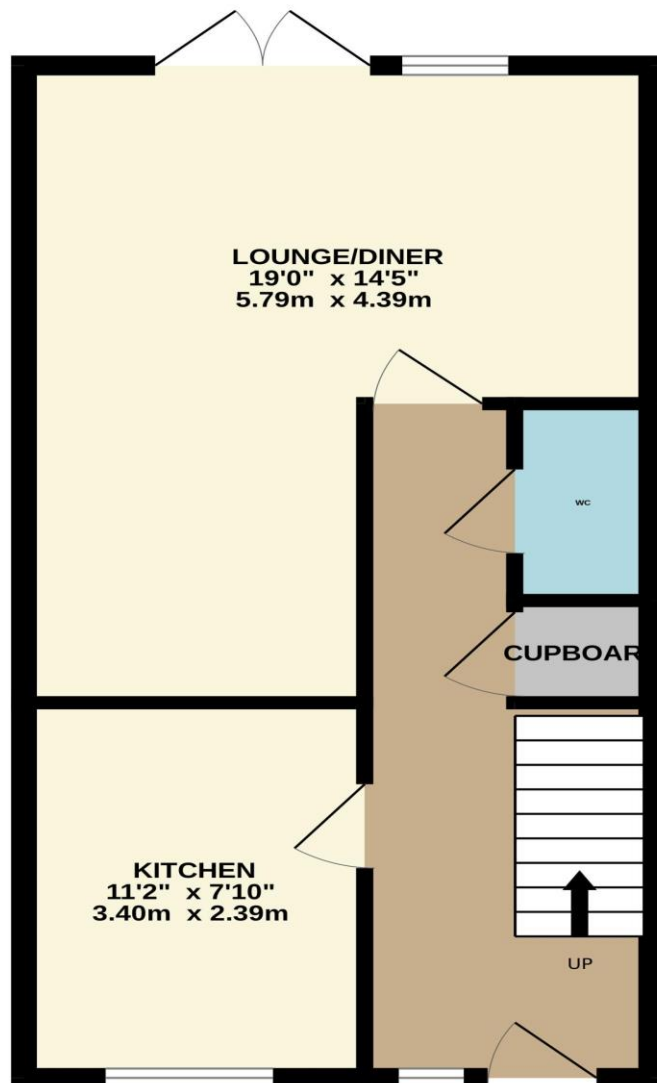
Cheshunts leading estate agent.  
Please get in touch for your free  
property valuation.



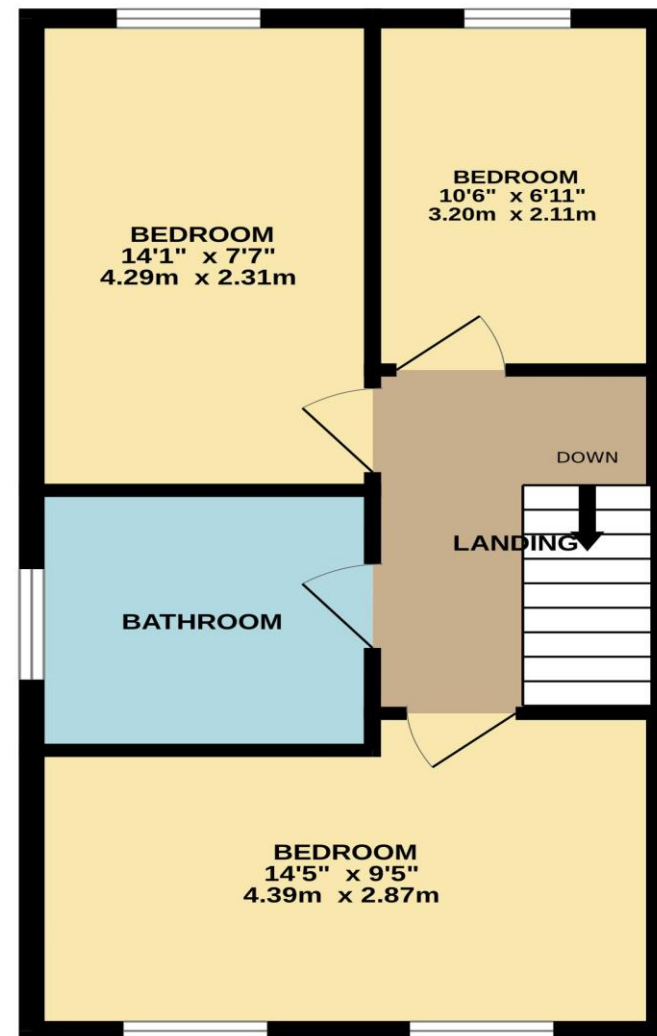




GROUND FLOOR  
433 sq.ft. (40.2 sq.m.) approx.



1ST FLOOR  
433 sq.ft. (40.2 sq.m.) approx.



TOTAL FLOOR AREA : 865 sq.ft. (80.4 sq.m.) approx.

Whilst every attempt has been made to ensure the accuracy of the floorplan contained here, measurements of doors, windows, rooms and any other items are approximate and no responsibility is taken for any error, omission or mis-statement. This plan is for illustrative purposes only and should be used as such by any prospective purchaser. The services, systems and appliances shown have not been tested and no guarantee as to their operability or efficiency can be given.  
Made with Metropix ©2025

