



 paulwallace

Garner Drive, Turnford, EN10 6AU |  
£429,995 | Freehold



## Garner Drive, Turnford, EN10 6AU

This BEAUTIFULLY PRESENTED three bedroom mid terrace property in the heart of sought after TURNFORD benefits from a spacious LOUNGE/DINER WITH separate refitted kitchen, FOUR PIECE BATHROOM SUITE, downstairs W/C, WEST FACING REAR GARDEN and garage. With gas central heating and double glazed windows throughout.

### Key features

- Three Bedrooms
- Beautifully Presented Throughout
- Spacious Lounge Diner
- Garage En Bloc
- Mid Terrace
- Downstairs W/C
- West Facing Rear Garden
- Gas Central Heating

### Property Information

Tenure  
Freehold

Council Tax  
D

EPC Rating  
C



**Paul Wallace Estate Agents**  
Brookfield Centre  
Cheshunt  
Hertfordshire  
EN8 0NN

01992 781100

cheshunt@paulwallace.co.uk

www.paulwallace.co.uk

Opening Times

Mon - Fri	9 am to 6:30 pm
Sat	9 am to 5:30 pm
Sun	Closed
Bank Hols	Closed

**paulwallace**  
estate agents

Cheshunts leading estate agent.  
Please get in touch for your free  
property valuation.



**paulwallace**









 paulwallace



 paulwallace

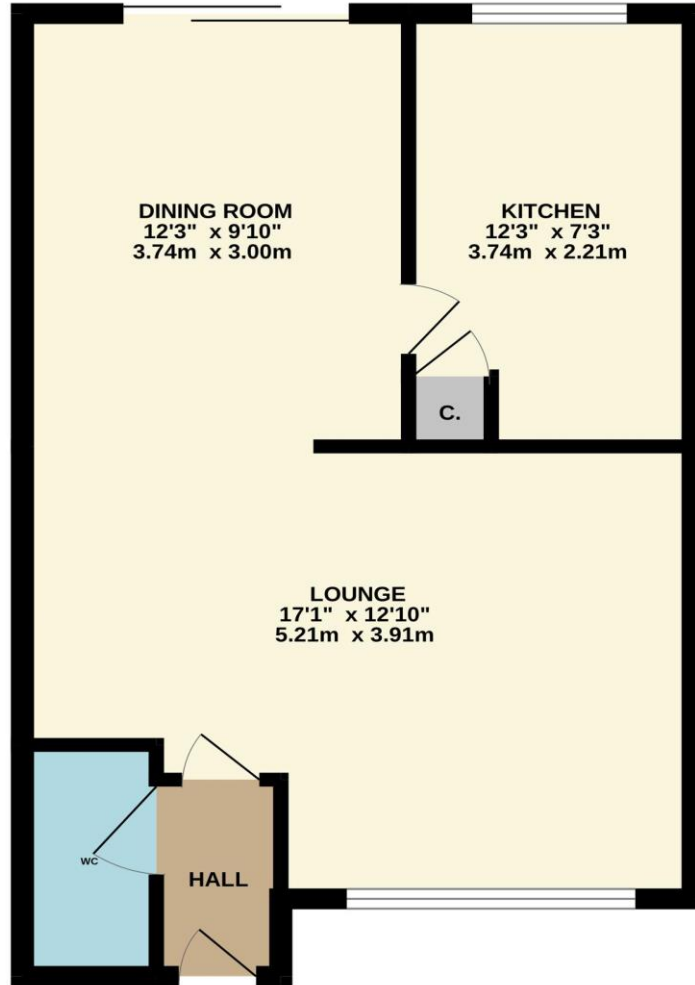


 paulwallace

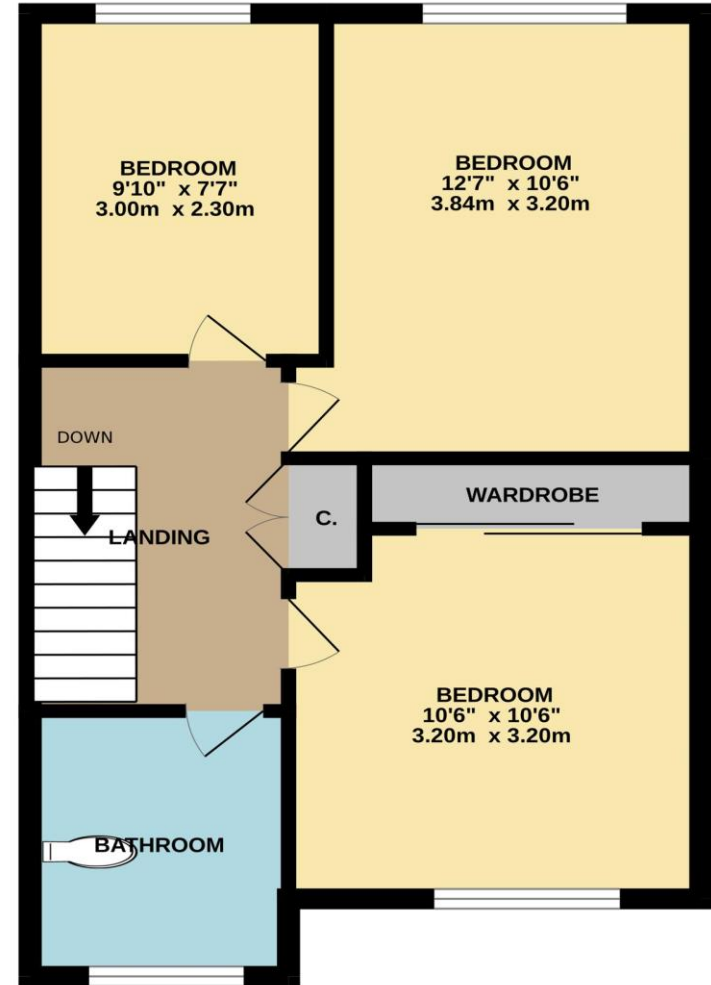


 paulwallace

GROUND FLOOR  
443 sq.ft. (41.2 sq.m.) approx.



1ST FLOOR  
443 sq.ft. (41.2 sq.m.) approx.



TOTAL FLOOR AREA : 887 sq.ft. (82.4 sq.m.) approx.

Whilst every attempt has been made to ensure the accuracy of the floorplan contained here, measurements of doors, windows, rooms and any other items are approximate and no responsibility is taken for any error, omission or mis-statement. This plan is for illustrative purposes only and should be used as such by any prospective purchaser. The services, systems and appliances shown have not been tested and no guarantee as to their operability or efficiency can be given.

Made with Metropix ©2024



