





Tudor Close, West Cheshunt, EN7 5BN

This TWO BEDROOM SEMI DETACHED property benefits from a CORNER PLOT with views over the NEW RIVER with potential to extend (STPP). Beautifully presented throughout with a REFITTED BATHROOM and a KITCHEN/DINER with separate utility room. Gas central heating and double glazed windows.

### Key features

- Two Bedrooms
- Beautifully Presented
- Kitchen/Diner
- Corner Plot
- Semi Detached
- Refitted Bathroom
- Utility Room
- Potential To Extend (STPP)

### Property Information

Tenure  
Freehold

Council Tax  
D

EPC Rating  
D

Local Authority  
Broxbourne Borough Council



**Paul Wallace Estate Agents**  
Brookfield Centre  
Cheshunt  
Hertfordshire  
EN8 0NN

01992 781100

cheshunt@paulwallace.co.uk

www.paulwallace.co.uk

Opening Times

Mon - Fri	9 am to 6:30 pm
Sat	9 am to 5:30 pm
Sun	Closed
Bank Hols	Closed

**paulwallace**  
estate agents

Cheshunts leading estate agent.  
Please get in touch for your free  
property valuation.



**paulwallace**









 paulwallace



 paulwallace

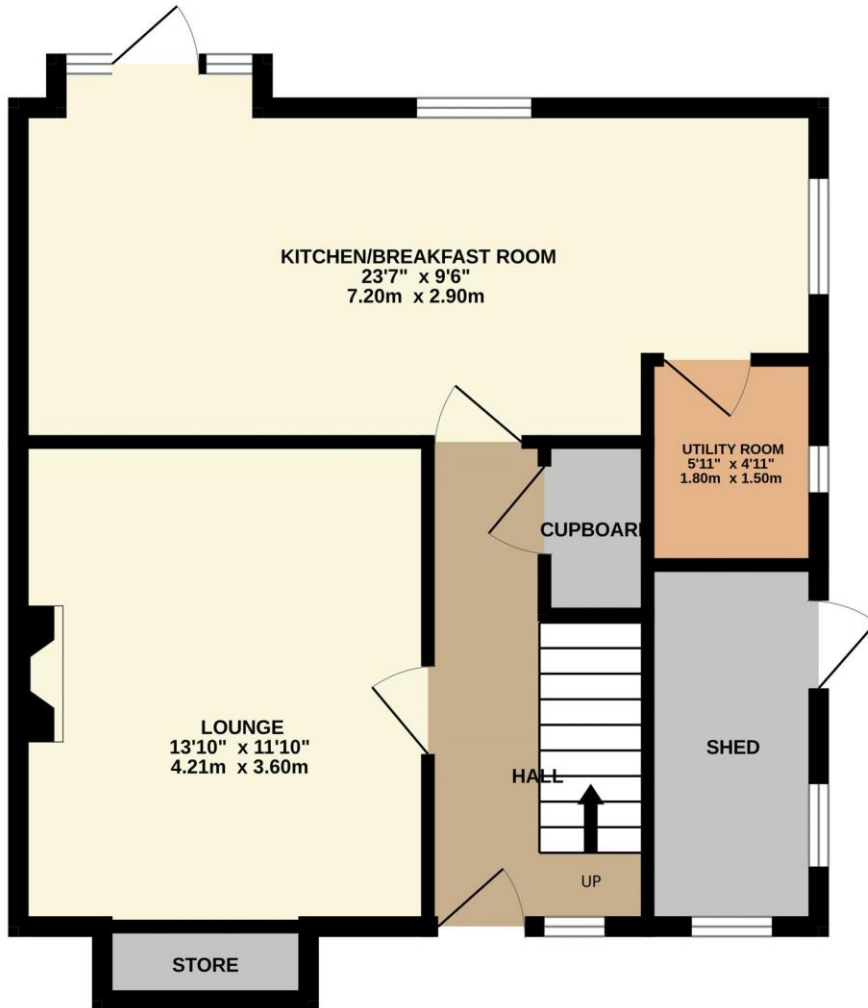


 paulwallace

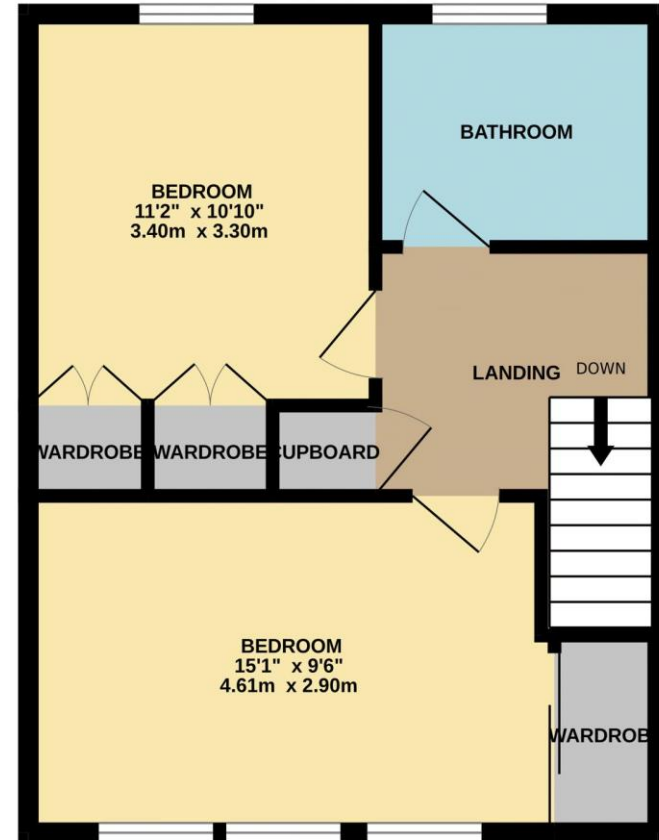


 paulwallace

GROUND FLOOR  
553 sq.ft. (51.4 sq.m.) approx.



1ST FLOOR  
423 sq.ft. (39.3 sq.m.) approx.



TOTAL FLOOR AREA : 976 sq.ft. (90.7 sq.m.) approx.

Whilst every attempt has been made to ensure the accuracy of the floorplan contained here, measurements of doors, windows, rooms and any other items are approximate and no responsibility is taken for any error, omission or mis-statement. This plan is for illustrative purposes only and should be used as such by any prospective purchaser. The services, systems and appliances shown have not been tested and no guarantee as to their operability or efficiency can be given.

Made with Metropix ©2024





 paulwallace



 paulwallace



 paulwallace



 paulwallace



