



 paulwallace

Stanstead Road, Hoddesdon, EN11 0RR |
£769,000 | Freehold

Stanstead Road, Hoddesdon, EN11 0RR

2500 SQ²ft of LIVING SPACE. GATED IN-OUT CARRIAGE DRIVEWAY. HUGE POTENTIAL TO REMODEL TO SUIT. With superb kerb appeal, this exceptionally spacious and unique four-bedroom detached home with three reception rooms, spacious loft room and large conservatory offers an opportunity to acquire a spectacular home with further potential to remodel to your desires. Accessed via gated entrances to the carriage driveway with parking for up to 6 cars, the property benefits from; entrance hall leading to spacious sitting room and lounge, study, dining room, kitchen, wc and conservatory. There is also a utility room and outdoor kitchen. Upstairs, there's four bedrooms, a shower room and family bathroom and a further staircase up to a 26ft loft room with Velux roof lights and dual aspect windows providing a flexible space for a home office, gym, or den with plentiful storage. The extensive plot includes a large west-facing rear garden and detached oversized double Garage/Workshop with tall 2.742m x 4.466m roller shutter door. The property benefits from gas central heating, double glazing throughout, and solar panels which not only provide a significant income but also power the home during the day, including air conditioning and heating. Rarely available, this property promises endless possibilities. Arrange a viewing today to truly appreciate the potential of this extraordinary home. Chain free.

Key features

- MASSIVE POTENTIAL TO REMODEL + PERSONALISE TO TASTE
- GENERATES ANNUAL INCOME via 400kw SOLAR PANELS
- DETACHED OVERSIZED DOUBLE GARAGE/WORKSHOP
- IMPRESSIVE 4 BED HOME
- 2500 SQ²ft of LIVING SPACE + VERSATILE OUTBUILDINGS
- PRIVATE GATED DRIVE IN, DRIVE OUT, 6 CAR DRIVEWAY
- AIR CONDITIONING and HEAT PUMP INSTALLED
- VERSATILE 26ft LOFT ROOM

Council Tax Band E & EPC Rating C



 paulwallace
estate agents

hoddesdon@paulwallace.co.uk

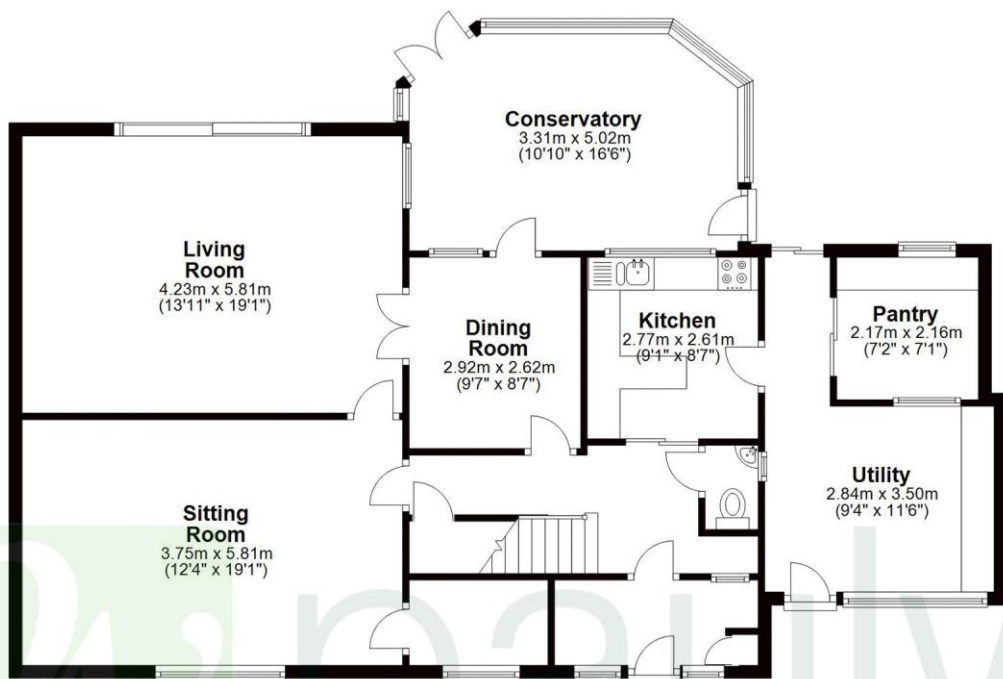
01992 466471



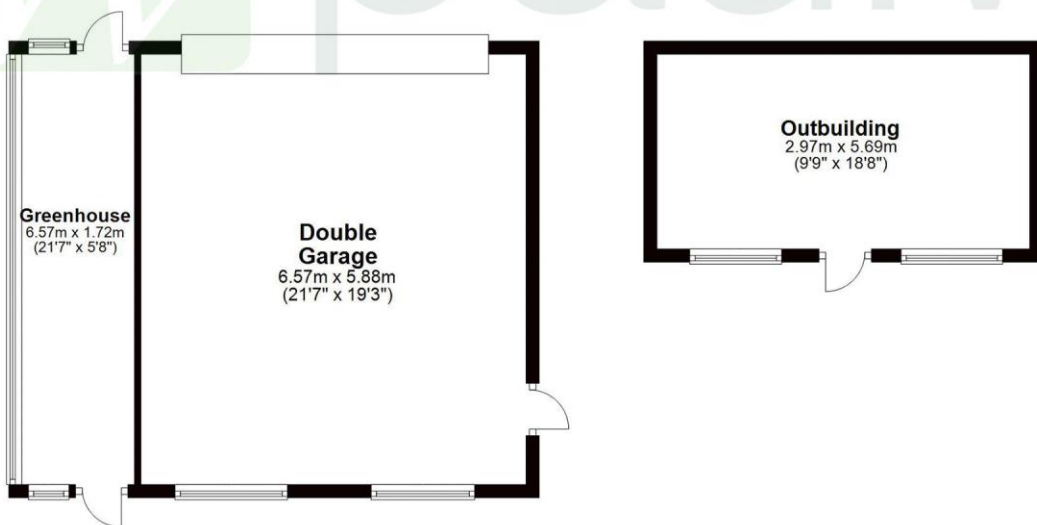
 paulwalter



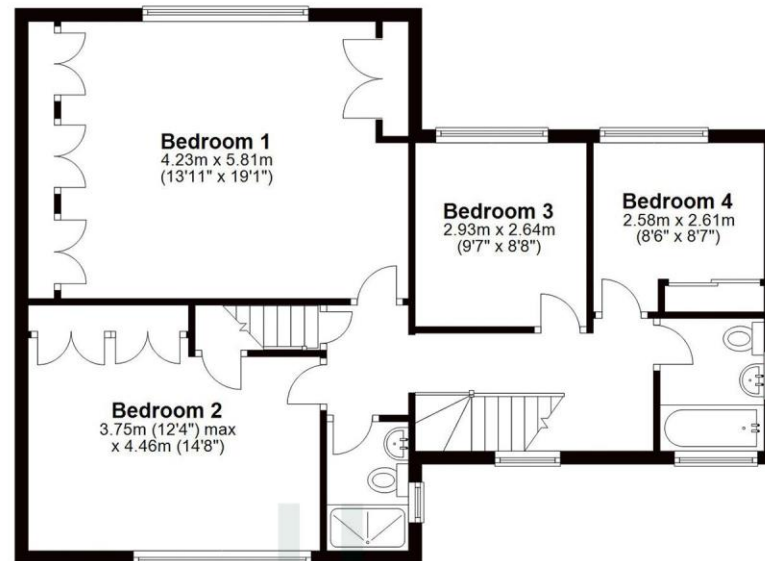
Ground Floor
Approx. 115.2 sq. metres (1239.7 sq. feet)



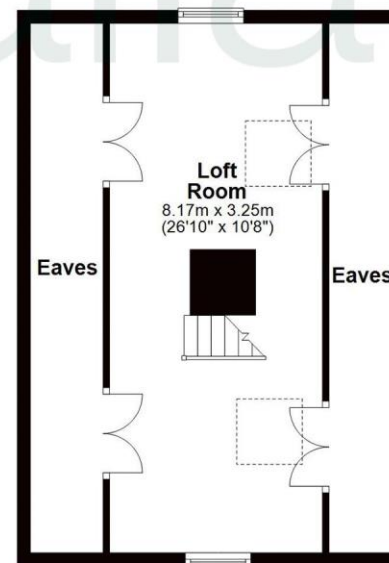
Outbuildings
Approx. 67.5 sq. metres (726.7 sq. feet)



First Floor
Approx. 72.8 sq. metres (783.1 sq. feet)



Second Floor
Approx. 44.3 sq. metres (477.1 sq. feet)



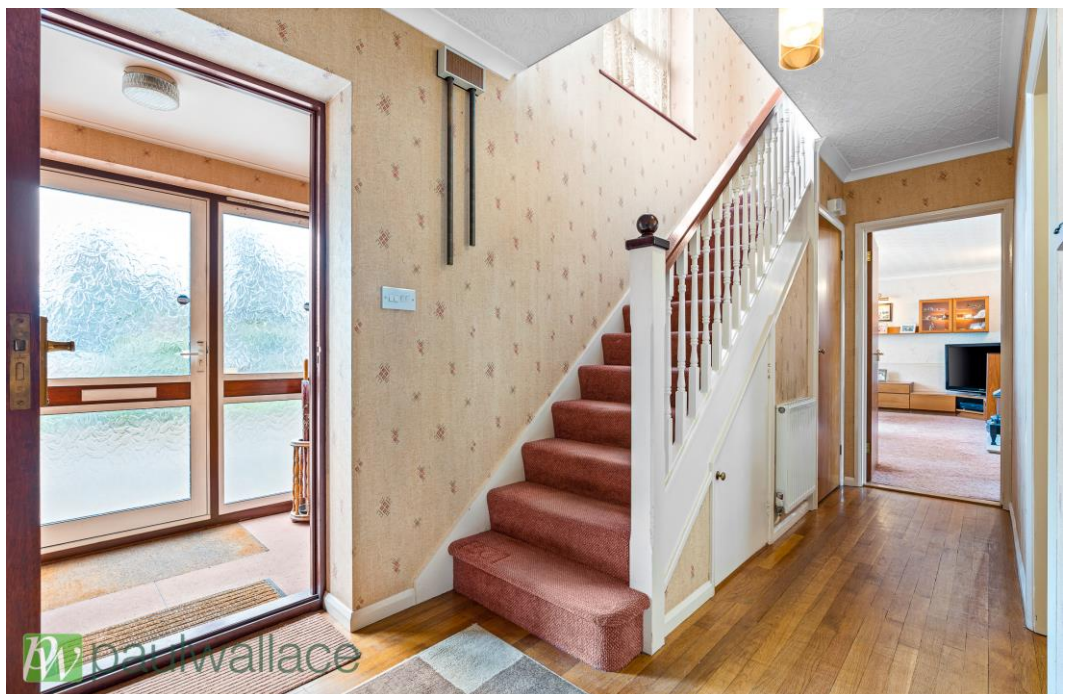
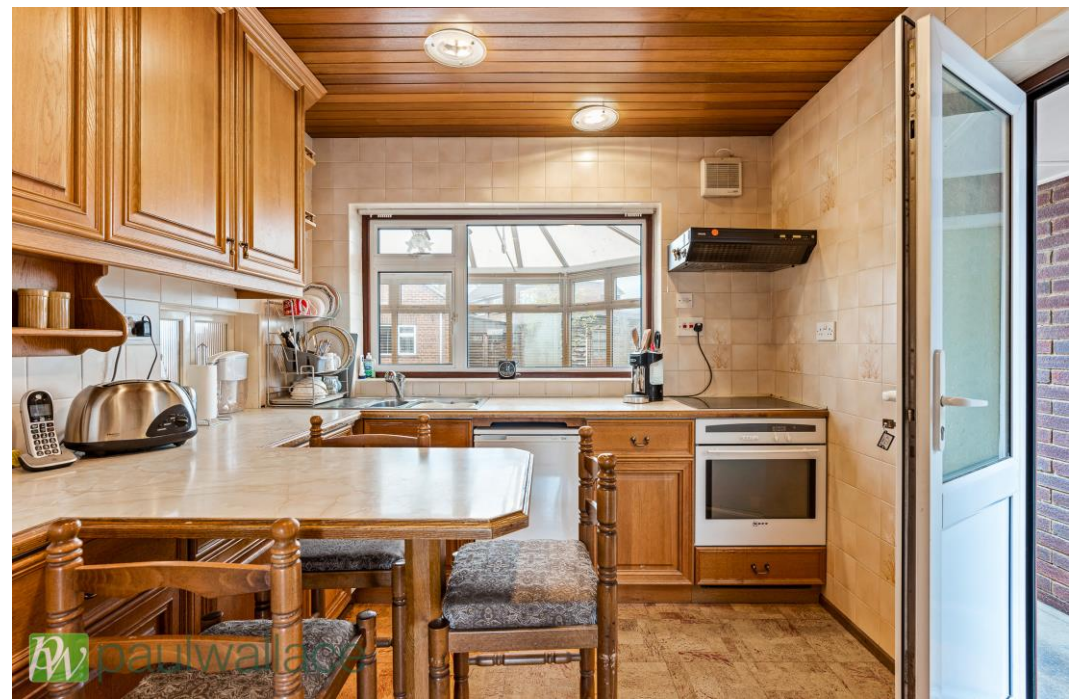
Total area: approx. 299.8 sq. metres (3226.6 sq. feet)

FOR ILLUSTRATIVE PURPOSES ONLY. NOT TO SCALE

Whilst every attempt has been made to ensure the accuracy of the floor plan shown, all measurements, positioning, fixtures, features, fittings and any other data shown are an approximate interpretation for illustrative purposes only and are not to scale. No responsibility is taken for any error, omission, miss-statement or use of data shown.

Property marketing provided by www.matthewkyle.co.uk







Paul Wallace Estate Agents

70 High Street
Hoddesdon
Hertfordshire
EN11 8ET

 01992 466471

 hoddesdon@paulwallace.co.uk

 www.paulwallace.co.uk



Opening Times

Mon	9am to 6.30pm
Tues	9am to 6.30pm
Wed	9am to 6.30pm
Thurs	9am to 6.30pm
Fri	9am to 6.30pm
Sat	9am to 5.00pm
Sun	Closed



Agents Note: Whilst every care has been taken to prepare these sales particulars, they are for guidance purposes only. All measurements are approximate and are for general guidance purposes only and whilst every care has been taken to ensure their accuracy, they should not be relied upon. Potential buyers are advised to recheck the measurements.