



Betts Lane, Nazeing – Character Cottage with 0.68 Acres, Garage
& Annexe, EN9 2DA |

Betts Lane, Nazeing – Character Cottage with 0.68 Acres, Garage & Annexe, EN9 2DA

Key features

- Charming three-bedroom semi-detached period cottage, thought to date from the late 18th century
- Shingled driveway plus second gated entrance leading to additional parking/turning space
- Full of period charm with exposed beams and character features
- Peaceful semi-rural location close to countryside walks, yet just minutes from Broxbourne station (fast trains to London Liverpool Street in under 30 minutes)
- Set within 0.68 acres of extensive grounds with lawns, mature trees and garden areas
- Sympathetically improved with detached garage, annexe and ground floor extension
- Ample parking with space for multiple vehicles

Property Information

Freehold

Council Tax C

Local Authority Epping Forest District Council



 **paulwallace**
estate agents

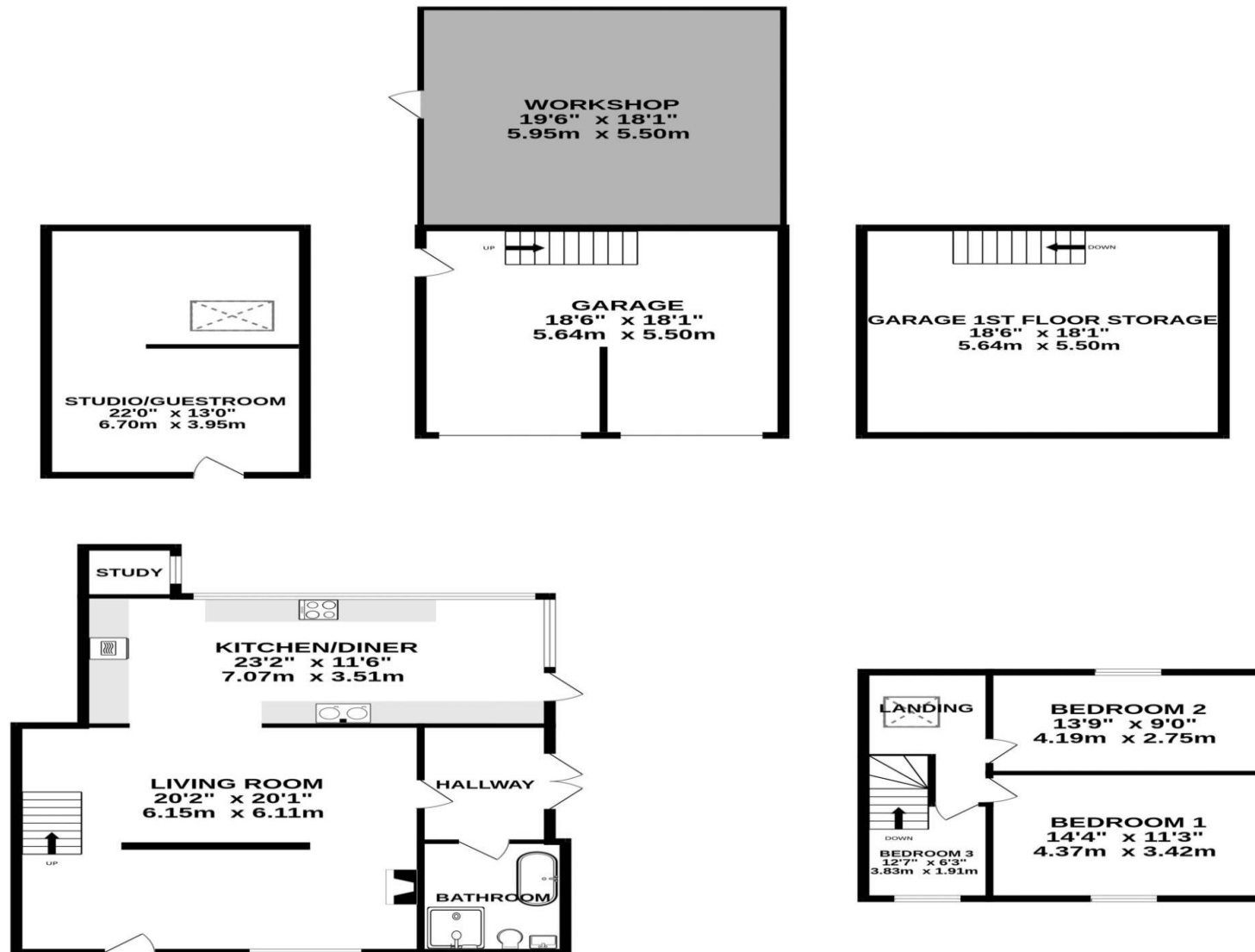
hoddesdon@paulwallace.co.uk

01992 466471



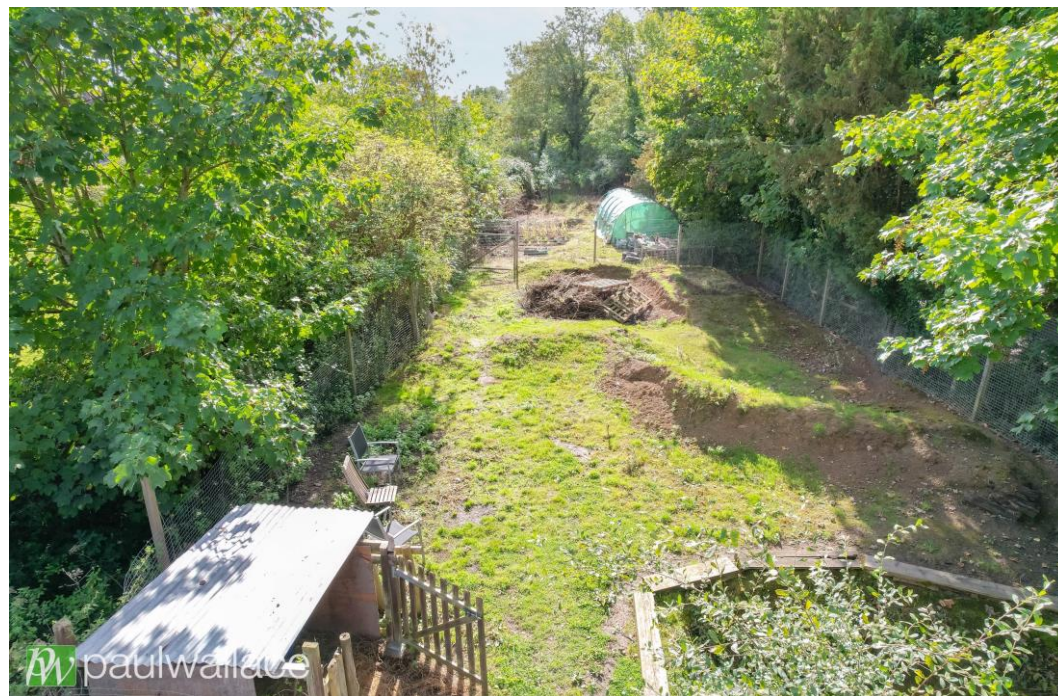


GROUND FLOOR
803 sq.ft. (74.6 sq.m.) approx.



TOTAL FLOOR AREA : 1208 sq.ft. (112.2 sq.m.) approx.

Whilst every attempt has been made to ensure the accuracy of the floorplan contained here, measurements of doors, windows, rooms and any other items are approximate and no responsibility is taken for any error, omission or mis-statement. This plan is for illustrative purposes only and should be used as such by any prospective purchaser. The services, systems and appliances shown have not been tested and no guarantee as to their operability or efficiency can be given.
Made with Metropix ©2025







Paul Wallace Estate Agents

70 High Street
Hoddesdon
Hertfordshire
EN11 8ET



01992 466471



hoddesdon@paulwallace.co.uk



www.paulwallace.co.uk



Opening Times

Mon	9am to 6.30pm
Tues	9am to 6.30pm
Wed	9am to 6.30pm
Thurs	9am to 6.30pm
Fri	9am to 6.30pm
Sat	9am to 5.00pm
Sun	Closed



Agents Note: Whilst every care has been taken to prepare these sales particulars, they are for guidance purposes only. All measurements are approximate and are for general guidance purposes only and whilst every care has been taken to ensure their accuracy, they should not be relied upon. Potential buyers are advised to recheck the measurements.