




BRICKENDON COURT
PLAT No. 1-6
20-24

 paulwallace

Brickendon Court, Hoddesdon, EN11 8DL |
£259,995 | Leasehold

Brickendon Court, Hoddesdon, EN11 8DL

This ground floor two-bedroom apartment is offered chain-free and is conveniently located within walking distance of the town centre. This property is accessed via its own front door, leading to an entrance hallway with doors leading to a spacious lounge/diner, an attractive kitchen, well-appointed bathroom and two bedrooms. The property also benefits from a garage enbloc, and is perfect for first-time buyers, young families, or investors seeking a well-presented property in a desirable location.

Key features

- Offered chain free with 138 years remaining on lease
- Ground floor apartment with own front door
- Two bedrooms
- Attractive kitchen and bathroom
- Spacious lounge / diner
- Double glazed windows
- Garage En bloc

Property Information

Tenure
Leasehold
Council Tax
C

EPC Rating

Local Authority
Bromsbury Borough Council

Lease Length

Service Charge & Ground Rent
TBC

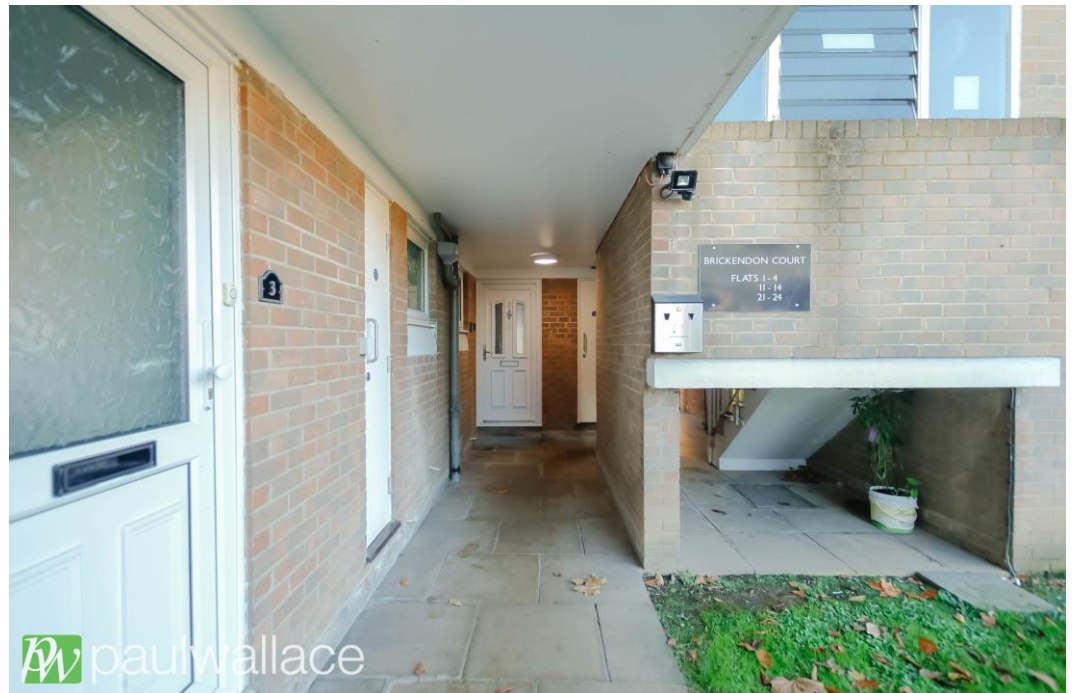


 paulwallace
estate agents

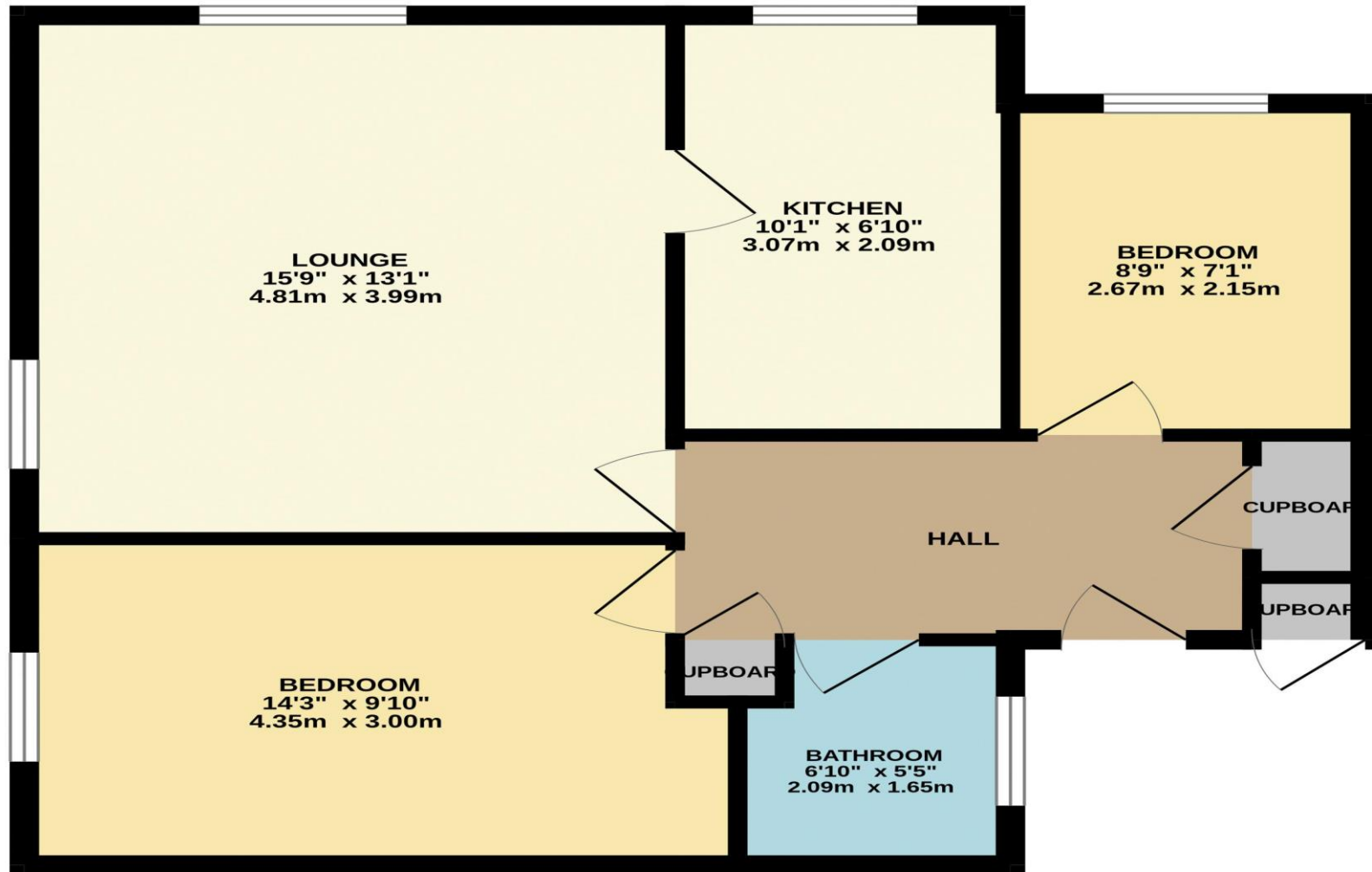
hoddesdon@paulwallace.co.uk

01992 466471





GROUND FLOOR
620 sq.ft. (57.6 sq.m.) approx.



TOTAL FLOOR AREA : 620 sq.ft. (57.6 sq.m.) approx.

Whilst every attempt has been made to ensure the accuracy of the floorplan contained here, measurements of doors, windows, rooms and any other items are approximate and no responsibility is taken for any error, omission or mis-statement. This plan is for illustrative purposes only and should be used as such by any prospective purchaser. The services, systems and appliances shown have not been tested and no guarantee as to their operability or efficiency can be given.
Made with Metropix ©2024





Paul Wallace Estate Agents

70 High Street
Hoddesdon
Hertfordshire
EN11 8ET



01992 466471



hoddesdon@paulwallace.co.uk



www.paulwallace.co.uk



Opening Times

Mon	9am to 6.30pm
Tues	9am to 6.30pm
Wed	9am to 6.30pm
Thurs	9am to 6.30pm
Fri	9am to 6.30pm
Sat	9am to 5.00pm
Sun	Closed



Agents Note: Whilst every care has been taken to prepare these sales particulars, they are for guidance purposes only. All measurements are approximate and are for general guidance purposes only and whilst every care has been taken to ensure their accuracy, they should not be relied upon. Potential buyers are advised to recheck the measurements.