



Shooters Drive, Nazeing, EN9 2QB

This chain-free semi-detached chalet bungalow offers an impressive 2500 ft², nestled against the serene backdrop of open countryside. Presented to an exceptional condition throughout, this property offers solid wood flooring and a galleried entrance hall. The ground floor features a versatile office/study, sitting room, formal lounge, dining room and spacious kitchen/breakfast room. Additional conveniences include a utility room, a ground floor shower room/w.c., and a family bathroom/w.c. The first floor hosts two bedrooms, with the benefit of an ensuite, along with a large loft space that offers potential for conversion (subject to planning permission). Outside, the property boasts a thoughtfully landscaped front garden with a block-paved driveway providing ample off-street parking. The stunning rear garden is a true highlight, presenting picturesque views over the countryside, featuring a large patio area, a decked area for outdoor entertaining, mature trees and shrubs, and a garden shed.

Key features

- Chain-free, semi-detached chalet bungalow
- Solid wood flooring and galleried entrance hall
- Spacious kitchen/breakfast room and utility room
- Two bedrooms on the first floor and ensuite

Approximately 2500 ft² of luxurious living space

- Versatile office/study and multiple reception rooms
- Ground floor shower room/w.c. and family bathroom/w.c.
- Generous, landscaped garden with stunning countryside views

Tenure Freehold Council Tax D

EPC Rating D Local Authority Epping Forest District Council



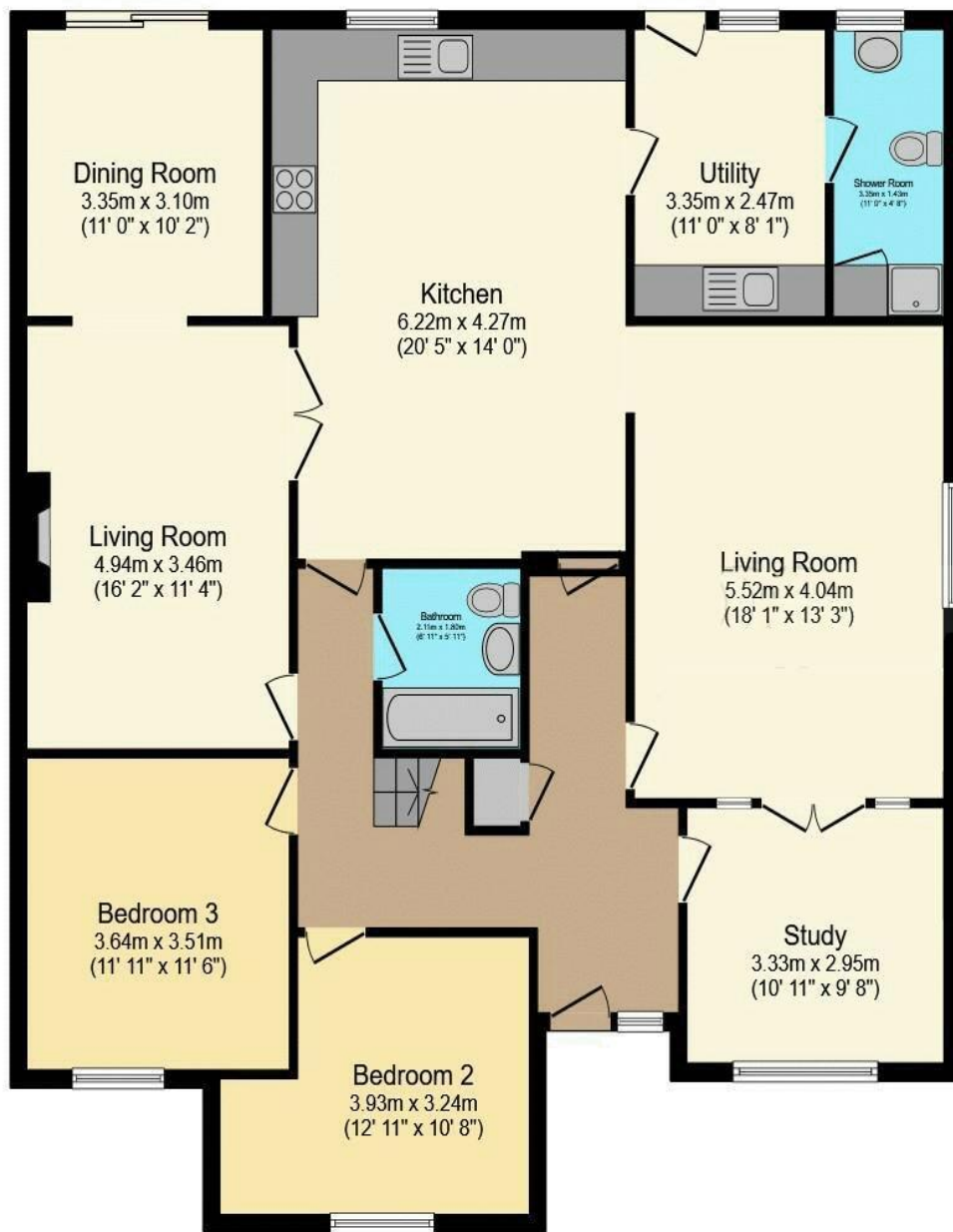
 paulwallace
estate agents

hoddesdon@paulwallace.co.uk

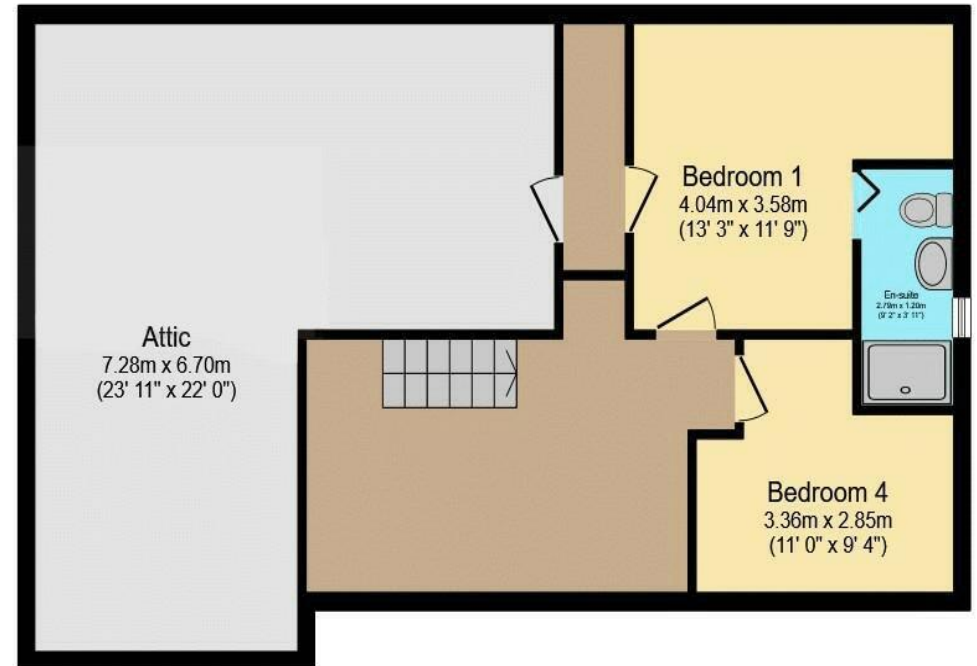
01992 466471







Ground Floor



First Floor

Total floor area 229.3 sq.m. (2,468 sq.ft.) approx

This floorplan is for illustrative purposes only and is not drawn to scale. Measurements, floor-areas, openings and orientations are approximate. They should not be relied upon for any purpose and do not form any part of an agreement. No liability is taken for any error or mis-statement. All parties must rely on their own inspections.







 paulwallace



Paul Wallace Estate Agents

70 High Street
Hoddesdon
Hertfordshire
EN11 8ET



01992 466471



hoddesdon@paulwallace.co.uk



www.paulwallace.co.uk



Opening Times

Mon	9am to 6.30pm
Tues	9am to 6.30pm
Wed	9am to 6.30pm
Thurs	9am to 6.30pm
Fri	9am to 6.30pm
Sat	9am to 5.00pm
Sun	Closed

 paulwallace
estate agents

Agents Note: Whilst every care has been taken to prepare these sales particulars, they are for guidance purposes only. All measurements are approximate and are for general guidance purposes only and whilst every care has been taken to ensure their accuracy, they should not be relied upon. Potential buyers are advised to recheck the measurements.