



Waterfall Close, Hoddesdon, EN11 9JX |
Fixed £260,000 | Leasehold

Waterfall Close, Hoddesdon, EN11 9JX

This exceptional two-bedroom apartment, situated on the top floor, combines contemporary living with practical features. With a generous 133-year lease, the property has a bright and spacious lounge that is perfect for both relaxation and entertaining, an attractive kitchen fitted with high-quality integrated appliances, stylish bathroom and an ensuite to the master bedroom. In addition to its well-appointed interiors, this apartment benefits from allocated parking, and is within walking distance of Rye House railway station, providing excellent transport links for commuting or leisurely travel.

Key features

- Two spacious bedrooms, including an en-suite bedroom one
- Attractive kitchen with integrated modern appliances
- Double-glazed windows for enhanced energy efficiency
- Top-floor location with abundant natural light
- Stylish and well-appointed main bathroom
- Allocated parking space for convenience
- Extended lease of 133 years for added peace of mind
- Within walking distance to Rye House railway station and Hoddesdon town centre

Property Information

Tenure
Leasehold
Council Tax
C



 paulwallace
estate agents

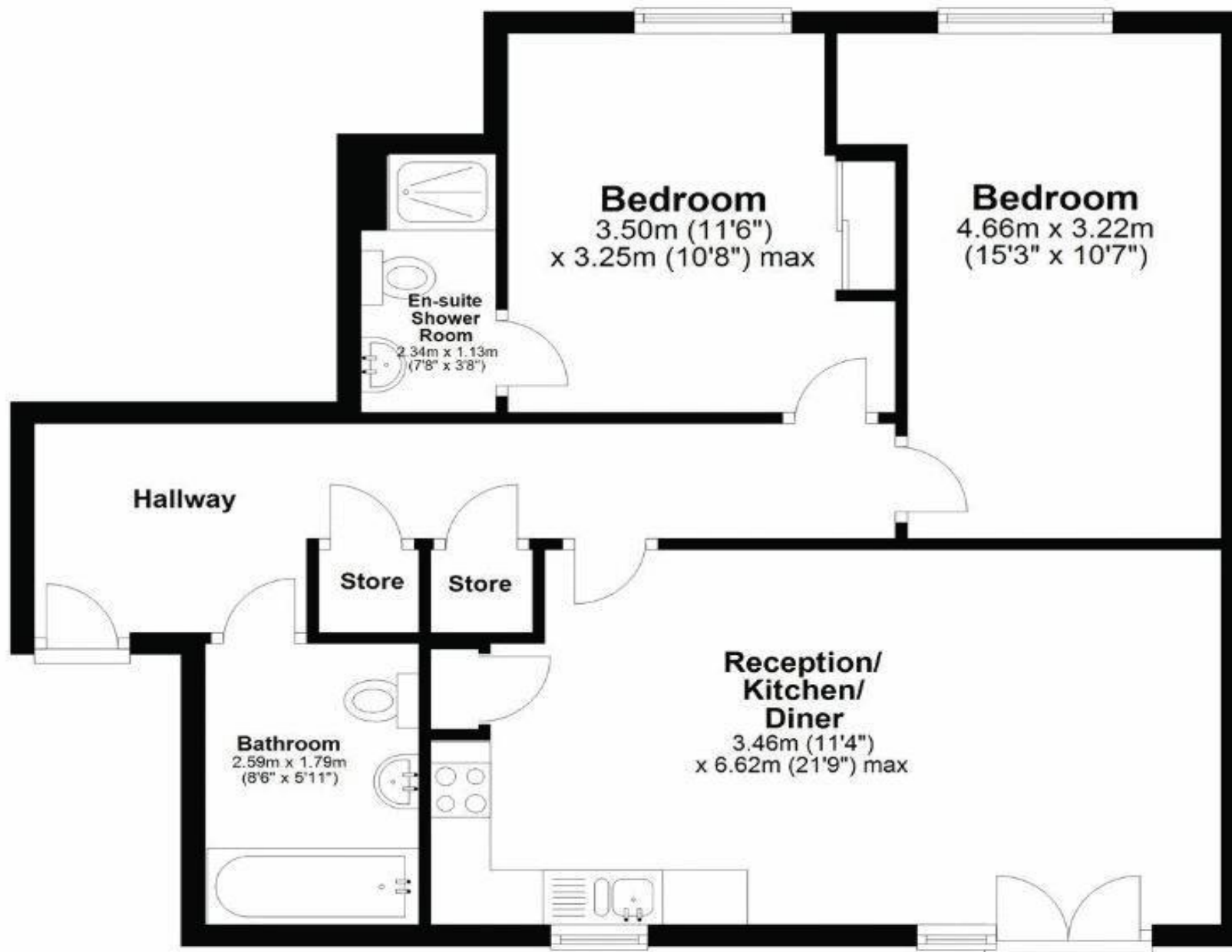
hoddesdon@paulwallace.co.uk

01992 466471





Approx. 66.6 sq. metres (716.4 sq. feet)



Total area: approx. 66.6 sq. metres (716.4 sq. feet)

Waterfall Close



Registered Address: Unit 3 The Brookfield Centre, Cheshunt, Herts, EN8 0NN Company Registration Number: OC414280 | VAT Number: 276958046©2022 Paul Wallace Group LLP trading as Paul Wallace Estate Agents



Paul Wallace Estate Agents

70 High Street
Hoddesdon
Hertfordshire
EN11 8ET



01992 466471



hoddesdon@paulwallace.co.uk



www.paulwallace.co.uk



Opening Times

Mon	9am to 6.30pm
Tues	9am to 6.30pm
Wed	9am to 6.30pm
Thurs	9am to 6.30pm
Fri	9am to 6.30pm
Sat	9am to 5.00pm
Sun	Closed



Agents Note: Whilst every care has been taken to prepare these sales particulars, they are for guidance purposes only. All measurements are approximate and are for general guidance purposes only and whilst every care has been taken to ensure their accuracy, they should not be relied upon. Potential buyers are advised to recheck the measurements.