



 paulwallace

Belvedere Court, Hoddesdon, EN11 8UX |
£195,000 | Leasehold

Belvedere Court, Hoddesdon, EN11 8UX

Offered chain-free, this one-bedroom ground-floor retirement apartment is ideally located for those seeking a comfortable and convenient lifestyle. This well-appointed residence boasts direct access to beautifully maintained communal gardens through double doors from the lounge, providing an ideal setting to access outdoor space. An on-site house manager ensures peace of mind, while the proximity to Barclay Park and Hoddesdon Town Centre offers the best of local amenities right at your doorstep. The apartment features a recently re-fitted kitchen and a modern shower room with w.c., designed for both functionality and style. The spacious lounge provides a warm and inviting atmosphere, enhanced by double-glazed windows that allow natural light to flood the space. The bedroom includes fitted wardrobes, offering ample storage solutions. Residents of this retirement community benefit from access to shared facilities, including a residents' lounge and communal laundry room, fostering a sense of community among neighbors.

Key features

- Chain-free, one-bedroom ground-floor retirement apartment
- Double doors from lounge allow for seamless outdoor access
- Close proximity to Barclay Park and Hoddesdon Town Centre
- Spacious lounge with double-glazed windows and french doors
- Direct access to landscaped communal gardens
- On-site house manager for added security and support
- Recently re-fitted kitchen and modern shower room/w.c.
- Access to communal facilities including residents' lounge and laundry room



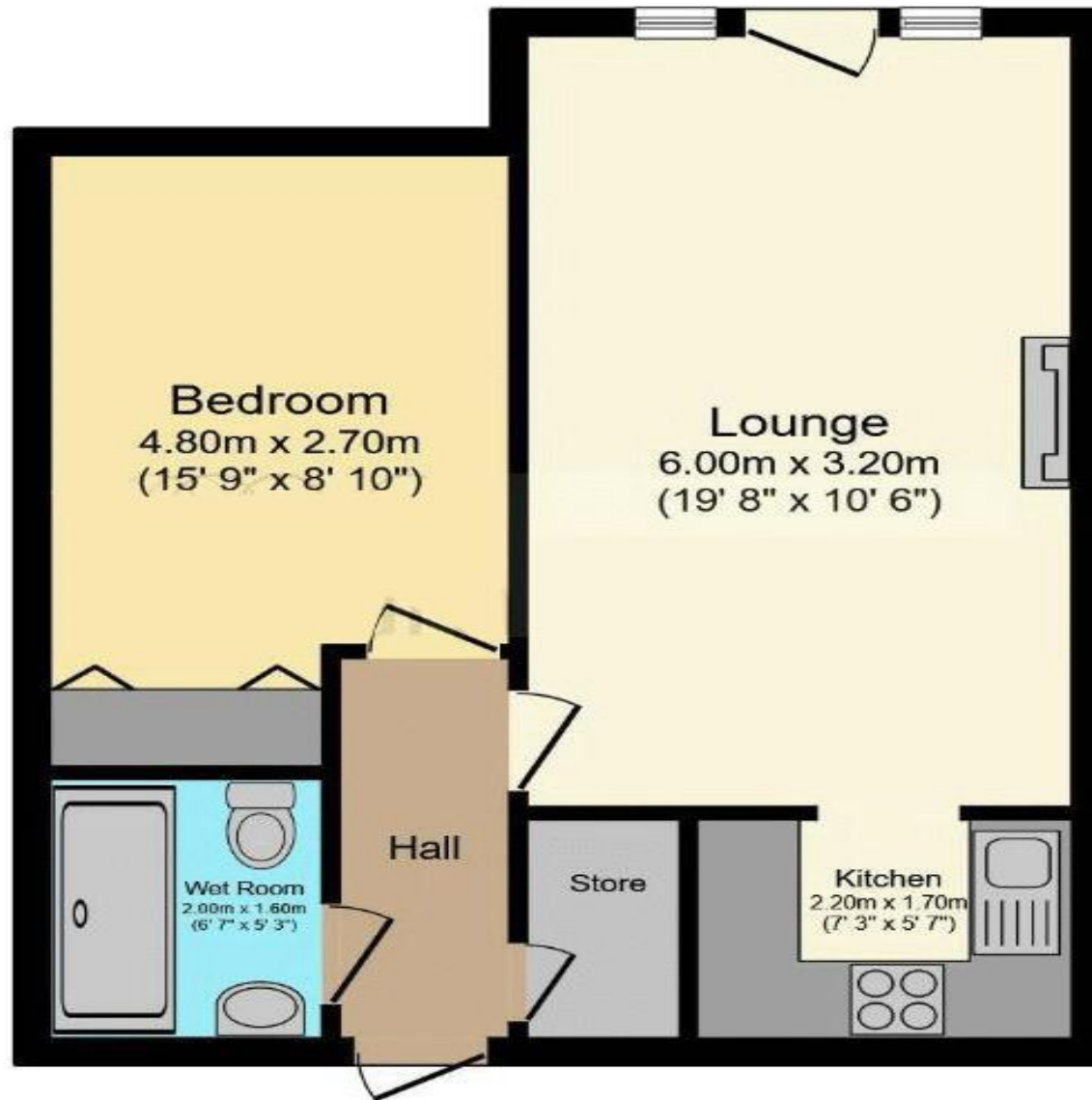
 paulwallace
estate agents

hoddesdon@paulwallace.co.uk

01992 466471









Registered Address: Unit 3 The Brookfield Centre, Cheshunt, Herts, EN8 0NN Company Registration Number: OC414280 | VAT Number: 276958046©2022 Paul Wallace Group LLP trading as Paul Wallace Estate Agents




Paul Wallace Estate Agents

70 High Street
Hoddesdon
Hertfordshire
EN11 8ET

 01992 466471

 hoddesdon@paulwallace.co.uk

 www.paulwallace.co.uk



Opening Times

Mon	9am to 6.30pm
Tues	9am to 6.30pm
Wed	9am to 6.30pm
Thurs	9am to 6.30pm
Fri	9am to 6.30pm
Sat	9am to 5.00pm
Sun	Closed



Agents Note: Whilst every care has been taken to prepare these sales particulars, they are for guidance purposes only. All measurements are approximate and are for general guidance purposes only and whilst every care has been taken to ensure their accuracy, they should not be relied upon. Potential buyers are advised to recheck the measurements.