



 paulwallace

North Street, Nazeing, EN9 2NW |
£622,000 | Freehold

North Street, Nazeing, EN9 2NW

This beautifully presented and extended three-bedroom semi-detached house, which offers an ideal family home. Set in a desirable location, this property boasts an impressive 140-foot rear garden, meticulously landscaped with an array of colorful flowers and shrubs, complemented by a serene garden pond and generously laid lawn areas. As you approach the residence, you will be welcomed by an attractive block-paved driveway, providing ample parking space. The entrance hallway sets a refined tone, leading into the expansive 27'1" living room, perfect for relaxation and entertainment. The heart of the home is a spacious 19' x 16'2" kitchen/diner, ideally designed for family gatherings and culinary pursuits. Adjacent to the kitchen, the conservatory offers a bright and airy space. This property features a stunning four-piece bathroom and a convenient utility room with a W.C., enhancing the functionality of the home. Additionally, there is potential for further extension (subject to planning permission). This immaculate family home combines modern comforts with a truly stunning 140' rear garden, making it a must-see property.

Key features

- Extended three-bedroom semi-detached house
- Impressive block-paved driveway for ample parking
- Expansive 27'1" living room perfect for family gatherings
- Bright conservatory offering versatile living options
- Generous 140-foot rear garden with pond
- Impressive entrance hallway leading to spacious interiors
- Well-appointed 19' x 16'2" kitchen/diner with dining space
- Stunning four-piece bathroom and convenient utility room/W.C.



 paulwallace
estate agents

hoddlesdon@paulwallace.co.uk

01992 466471



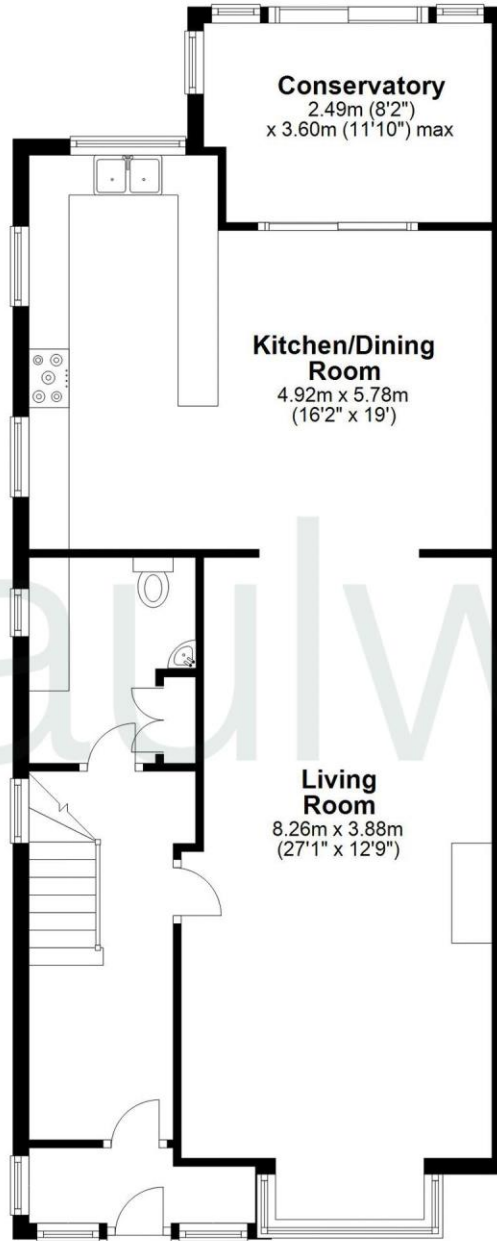
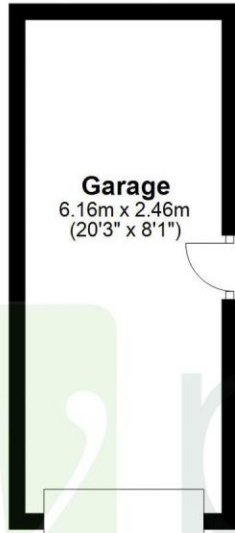


Ground Floor

Approx. 80.0 sq. metres (861.3 sq. feet)

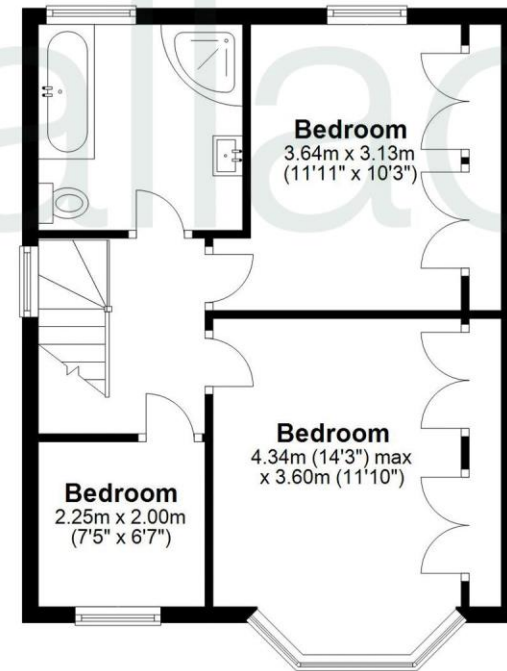
Outbuilding

Approx. 15.1 sq. metres (162.9 sq. feet)



First Floor

Approx. 43.1 sq. metres (464.3 sq. feet)



Total area: approx. 138.3 sq. metres (1488.5 sq. feet)

FOR ILLUSTRATIVE PURPOSES ONLY. NOT TO SCALE

Whilst every attempt has been made to ensure the accuracy of the floor plan shown, all measurements, positioning, fixtures, features, fittings and any other data shown are an approximate interpretation for illustrative purposes only and are not to scale. No responsibility is taken for any error, omission, miss-statement or use of data shown.

Property marketing provided by www.matthewkyle.co.uk







Registered Address: Unit 3 The Brookfield Centre, Cheshunt, Herts, EN8 0NN Company Registration Number: OC414280 | VAT Number: 276958046©2022 Paul Wallace Group LLP trading as Paul Wallace Estate Agents



Paul Wallace Estate Agents

70 High Street
Hoddesdon
Hertfordshire
EN11 8ET

 01992 466471

 hoddesdon@paulwallace.co.uk

 www.paulwallace.co.uk



Opening Times

Mon	9am to 6.30pm
Tues	9am to 6.30pm
Wed	9am to 6.30pm
Thurs	9am to 6.30pm
Fri	9am to 6.30pm
Sat	9am to 5.00pm
Sun	Closed



Agents Note: Whilst every care has been taken to prepare these sales particulars, they are for guidance purposes only. All measurements are approximate and are for general guidance purposes only and whilst every care has been taken to ensure their accuracy, they should not be relied upon. Potential buyers are advised to recheck the measurements.