



Westcroft Court, New Road, Broxbourne, EN10 7NL |  
£0 | Leasehold

## Westcroft Court, New Road, Broxbourne, EN10 7NL

This stunning ground floor apartment is set within a highly sought-after development and is being offered chain free. Boasting two generously sized double bedrooms, this property offers an impressive 913 ft<sup>2</sup> of living space. The apartment benefits from a share of the freehold with over 900 years remaining on the lease. Conveniently located within walking distance of local amenities in Broxbourne and the railway station, this property is ideal for commuters and those seeking a vibrant community atmosphere. Additional features include a garage, communal parking, gas central heating, and double glazed windows for added comfort and convenience. The master bedroom also benefits from an en-suite bathroom, providing a touch of luxury to the already impressive property.

### Key features

- Chain free
- Two double bedrooms
- Garage included
- Gas central heating and double glazed windows
- Prime location in desirable development
- Share of freehold with over 900 years remaining on lease
- Walking distance to Broxbourne amenities and railway station
- En-suite to bedroom one

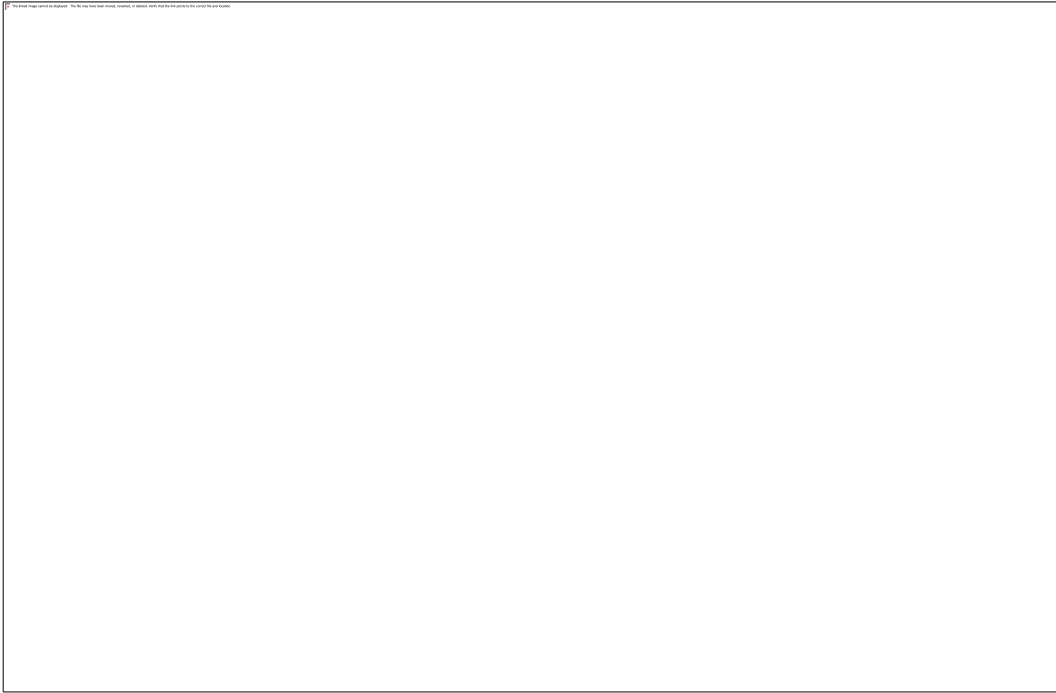


 paulwallace  
estate agents

[hoddesdon@paulwallace.co.uk](mailto:hoddesdon@paulwallace.co.uk)

01992 466471





# Westcroft Court

Approximate Gross Internal Area = 84.8 sq m / 913 sq ft

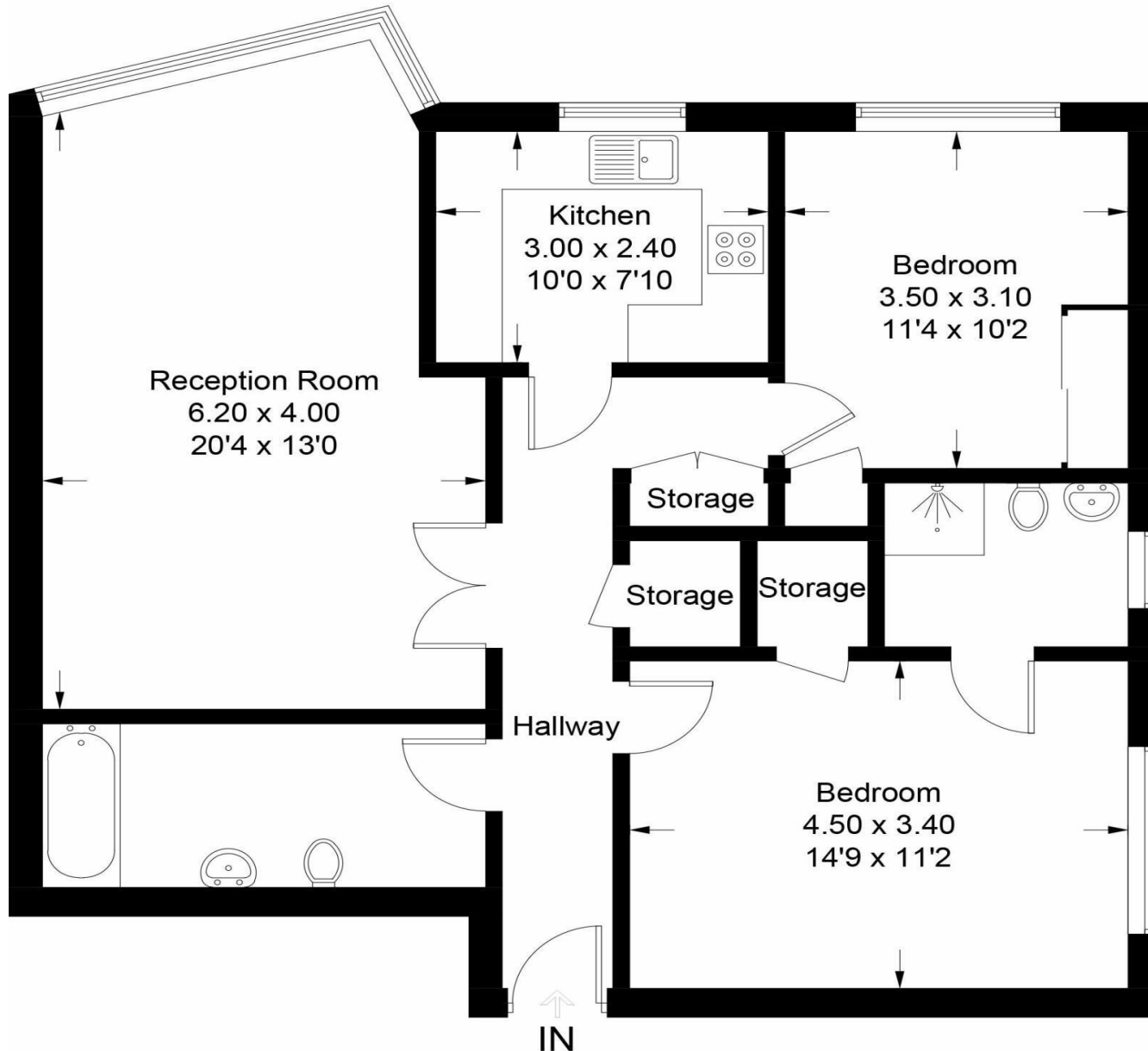


Illustration for identification purposes only, measurements are approximate, not to scale. FloorplansUsketch.com © 2023 (ID1000288)





Registered Address: Unit 3 The Brookfield Centre, Cheshunt, Herts, EN8 0NN Company Registration Number: OC414280 | VAT Number: 276958046©2022 Paul Wallace Group LLP trading as Paul Wallace Estate Agents



### Paul Wallace Estate Agents

70 High Street  
Hoddesdon  
Hertfordshire  
EN11 8ET

 01992 466471

 [hoddesdon@paulwallace.co.uk](mailto:hoddesdon@paulwallace.co.uk)

 [www.paulwallace.co.uk](http://www.paulwallace.co.uk)



### Opening Times

Mon	9am to 6.30pm
Tues	9am to 6.30pm
Wed	9am to 6.30pm
Thurs	9am to 6.30pm
Fri	9am to 6.30pm
Sat	9am to 5.00pm
Sun	Closed



Agents Note: Whilst every care has been taken to prepare these sales particulars, they are for guidance purposes only. All measurements are approximate and are for general guidance purposes only and whilst every care has been taken to ensure their accuracy, they should not be relied upon. Potential buyers are advised to recheck the measurements.