



Allmains Close, Nazeing, EN9 2LX

This beautifully presented three bedroom semi-detached house is situated in a peaceful cul-de-sac location, offering a tranquil living environment. The property boasts an attractive kitchen, two reception rooms, a superb shower room/w.c., and benefits from double glazed windows and gas central heating, ensuring comfort and convenience for the residents. The standout feature of this property is the stunning rear garden, perfect for relaxing or entertaining guests in the warmer months. The generous off-street parking adds to the appeal of this home, making it ideal for a growing family or those who value convenience. With further potential to extend (subject to planning permission), this property offers the opportunity to create additional living space to suit your needs. Don't miss out on this fantastic opportunity to own a spacious and well-maintained home in a desirable location.

Key features

- Situated in a cul-de-sac location
- Spacious three bedrooms
- Stunning rear garden
- Attractive kitchen
- Superb shower room / w.c.
- Generous off-street parking
- Two reception rooms
- Double glazed windows and gas central heating



 paulwallace
estate agents

hoddesdon@paulwallace.co.uk

01992 466471





 paulwallace



 paulwallace

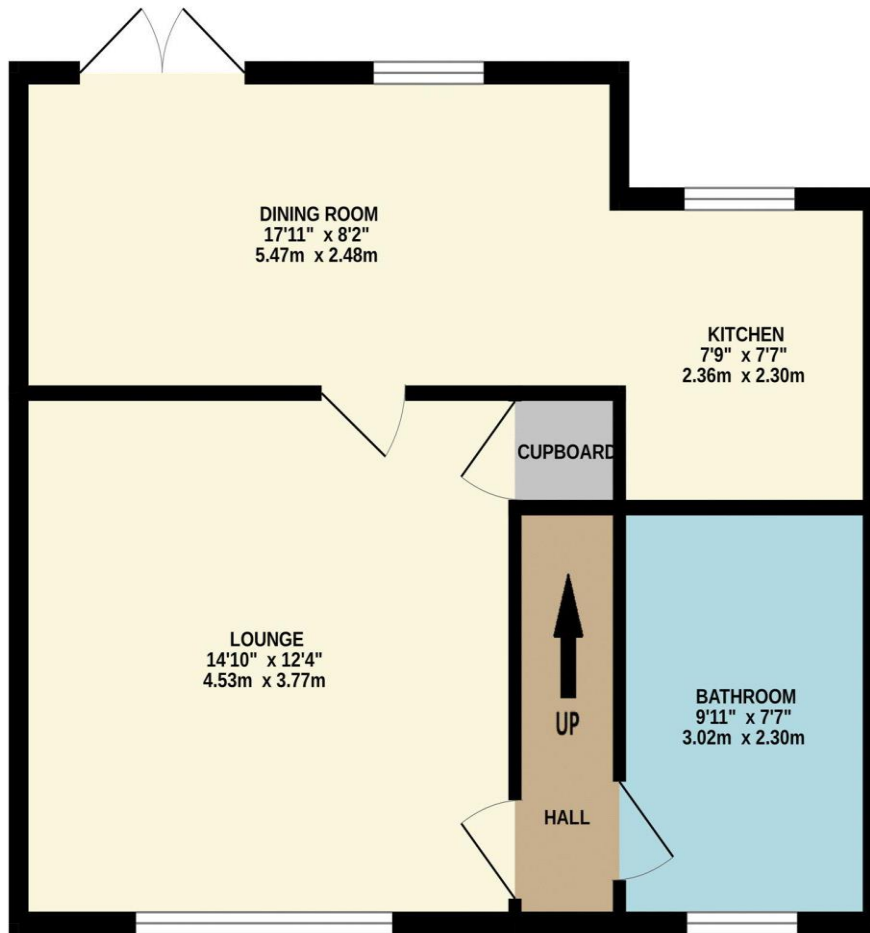


 paulwallace

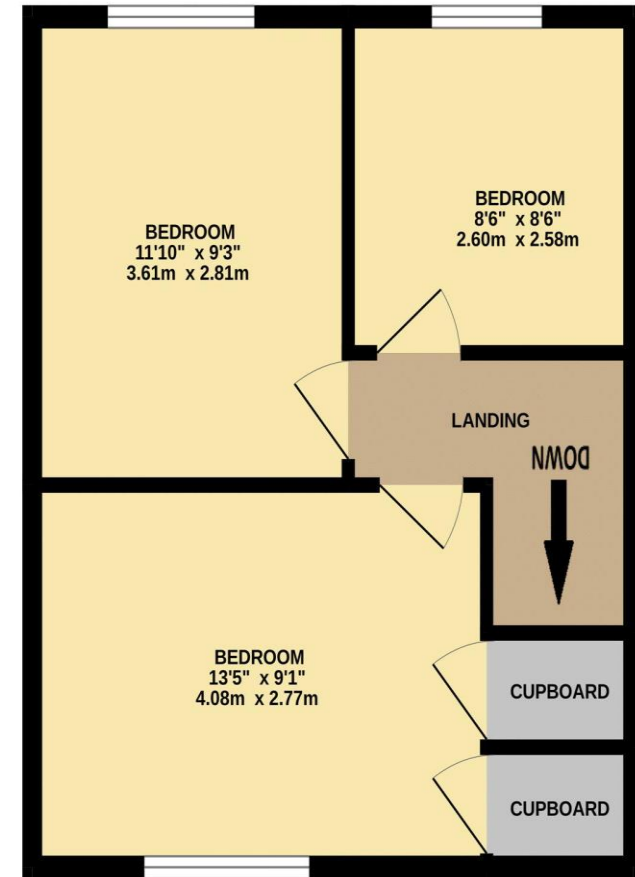


 paulwallace

GROUND FLOOR
526 sq.ft. (48.8 sq.m.) approx.



1ST FLOOR
387 sq.ft. (35.9 sq.m.) approx.



TOTAL FLOOR AREA : 912 sq.ft. (84.8 sq.m.) approx.

Whilst every attempt has been made to ensure the accuracy of the floorplan contained here, measurements of doors, windows, rooms and any other items are approximate and no responsibility is taken for any error, omission or mis-statement. This plan is for illustrative purposes only and should be used as such by any prospective purchaser. The services, systems and appliances shown have not been tested and no guarantee as to their operability or efficiency can be given.







Registered Address: Unit 3 The Brookfield Centre, Cheshunt, Herts, EN8 0NN Company Registration Number: OC414280 | VAT Number: 276958046©2022 Paul Wallace Group LLP trading as Paul Wallace Estate Agents




Paul Wallace Estate Agents

70 High Street
Hoddesdon
Hertfordshire
EN11 8ET

 01992 466471

 hoddesdon@paulwallace.co.uk

 www.paulwallace.co.uk



Opening Times

Mon	9am to 6.30pm
Tues	9am to 6.30pm
Wed	9am to 6.30pm
Thurs	9am to 6.30pm
Fri	9am to 6.30pm
Sat	9am to 5.00pm
Sun	Closed



Agents Note: Whilst every care has been taken to prepare these sales particulars, they are for guidance purposes only. All measurements are approximate and are for general guidance purposes only and whilst every care has been taken to ensure their accuracy, they should not be relied upon. Potential buyers are advised to recheck the measurements.