



 paulwallace

Westfield Road, Hoddesdon, EN11 8QX |  
Guide Price £650,000 | Freehold

Westfield Road, Hoddesdon, EN11 8QX

This spacious and extended three-bedroom detached house is offered for sale with no onward chain. Planning permission has been approved to extensively extend to front, side, rear, and into the loft space to create additional bedrooms. The garage offers further potential for conversion, and the property benefits from extensive off-street parking, impressive entrance hall, spacious lounge/diner, large kitchen/breakfast room, double glazed windows and is located only 1.1 miles from Rye House Station and within walking distance of Hoddesdon town centre.

#### Key features

- Three-bedroom detached house with no onward chain
- Planning permission secured for front, side and rear extensions
- Planning reference 07/16/0506/HF
- Ample off-street parking available
- Spacious kitchen/breakfast room
- Potential for garage conversion
- Impressive entrance hall and spacious lounge/diner



 paulwallace  
estate agents

hoddesdon@paulwallace.co.uk

01992 466471





 paulwallace



 paulwallace

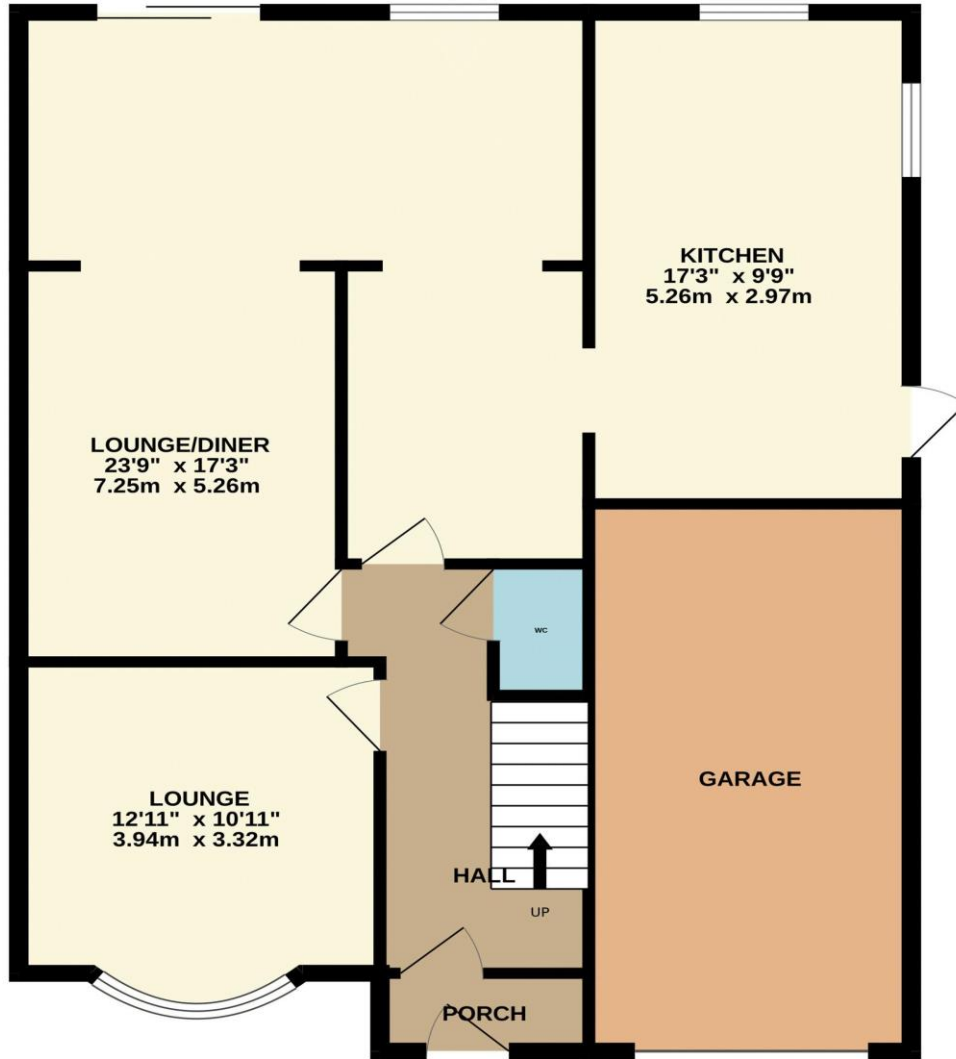


 paulwallace



 paulwallace

GROUND FLOOR  
960 sq.ft. (89.2 sq.m.) approx.



1ST FLOOR  
433 sq.ft. (40.2 sq.m.) approx.



TOTAL FLOOR AREA : 1393 sq.ft. (129.4 sq.m.) approx.

Whilst every attempt has been made to ensure the accuracy of the floorplan contained here, measurements of doors, windows, rooms and any other items are approximate and no responsibility is taken for any error, omission or mis-statement. This plan is for illustrative purposes only and should be used as such by any prospective purchaser. The services, systems and appliances shown have not been tested and no guarantee as to their operability or efficiency can be given.  
Made with Metropix ©2024



 paulwallace



 paulwallace



 paulwallace



 paulwallace



 paulwallace



 paulwallace



 paulwallace

Registered Address: Unit 3 The Brookfield Centre, Cheshunt, Herts, EN8 0NN Company Registration Number: OC414280 | VAT Number: 276958046©2022 Paul Wallace Group LLP trading as Paul Wallace Estate Agents



### Paul Wallace Estate Agents

70 High Street  
Hoddesdon  
Hertfordshire  
EN11 8ET

 01992 466471

 [hoddesdon@paulwallace.co.uk](mailto:hoddesdon@paulwallace.co.uk)

 [www.paulwallace.co.uk](http://www.paulwallace.co.uk)



### Opening Times

Mon	9am to 6.30pm
Tues	9am to 6.30pm
Wed	9am to 6.30pm
Thurs	9am to 6.30pm
Fri	9am to 6.30pm
Sat	9am to 5.00pm
Sun	Closed



Agents Note: Whilst every care has been taken to prepare these sales particulars, they are for guidance purposes only. All measurements are approximate and are for general guidance purposes only and whilst every care has been taken to ensure their accuracy, they should not be relied upon. Potential buyers are advised to recheck the measurements.