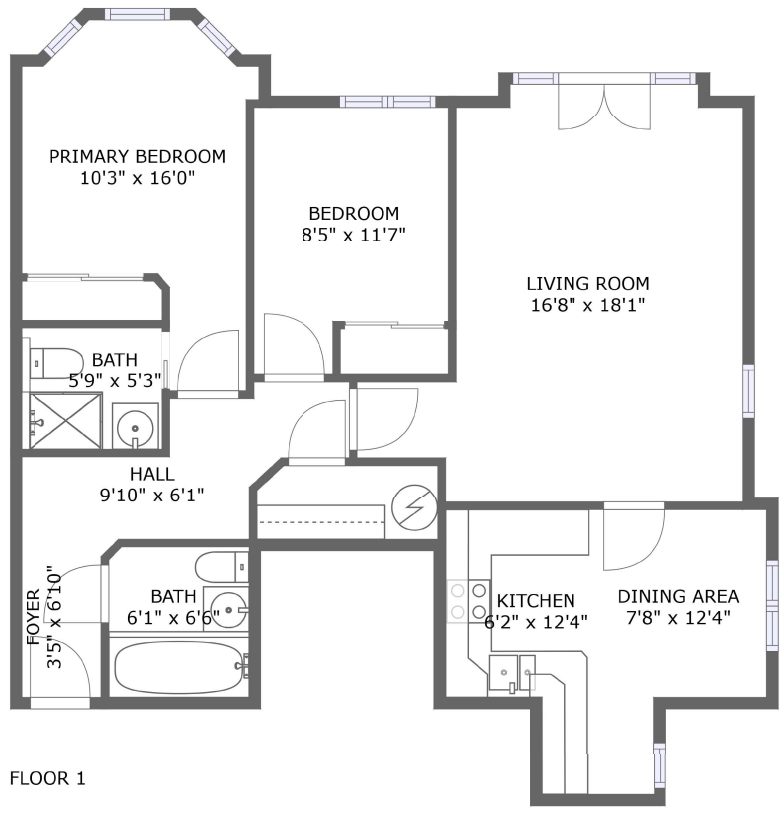
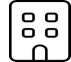




# Elleray House, Pembroke Road,4,Woking,United kingdom, 4

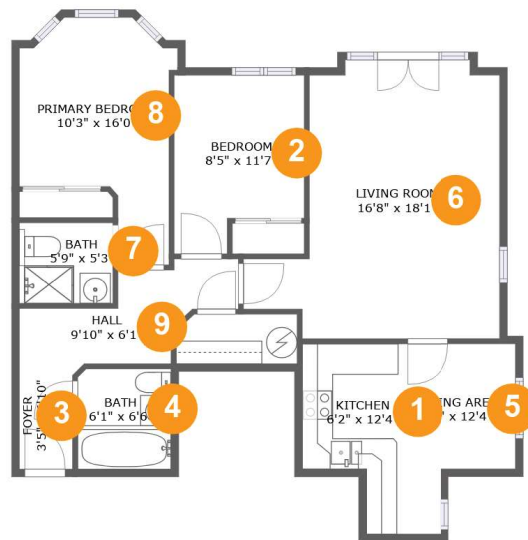


## Property Summary

 **0** garages     **2** bedrooms     **2** bathrooms     **0** half baths

 **1** floors     **809** Gross Living Area sqft     **809** total sqft

# Elleray House, Pembroke Road,4,Woking,United kingdom, 4



## Room Dimensions

Floor 1

Total sqft: 809

Living area: 809

#	Room name	Dimensions	Area (sqft)	Counted as Living Area
1	Kitchen	6'2" x 12'4"	59 sq. ft	Yes
2	Bedroom	8'5" x 11'7"	86 sq. ft	Yes
3	Foyer	3'5" x 6'10"	24 sq. ft	Yes
4	Bath	6'1" x 6'6"	39 sq. ft	Yes
5	Dining Area	7'8" x 12'4"	75 sq. ft	Yes
6	Living Room	16'8" x 18'1"	234 sq. ft	Yes
7	Bath	5'9" x 5'3"	32 sq. ft	Yes
8	Primary Bedroom	10'3" x 16'0"	117 sq. ft	Yes
9	Hall	9'10" x 6'1"	59 sq. ft	Yes

# Elleray House, Pembroke Road,4,Woking,United kingdom, 4

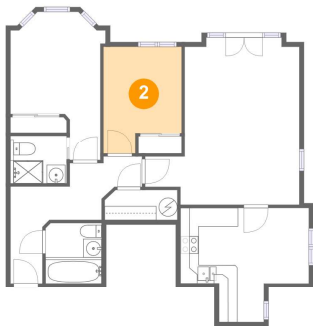
## 1 Floor 1 - Kitchen



Dimensions: 6'2" x 12'4"  
Area: 59 sq. ft  
Counted as Living Area:  
Yes

Heated: Yes  
Finished: Yes  
Enclosed: Yes  
Contiguous:  
Yes  
Permitted: Yes  
Wet Space: No  
Addition: No  
Conversion: No

## 2 Floor 1 - Bedroom



Dimensions: 8'5" x 11'7"  
Area: 86 sq. ft  
Counted as Living Area:  
Yes

Heated: Yes  
Finished: Yes  
Enclosed: Yes  
Contiguous:  
Yes  
Permitted: Yes  
Wet Space: No  
Addition: No  
Conversion: No

# Elleray House, Pembroke Road,4,Woking,United kingdom, 4

## 3 Floor 1 - Foyer



Dimensions: 3'5" x 6'10"  
Area: 24 sq. ft  
Counted as Living Area:  
Yes

Heated: Yes  
Finished: Yes  
Enclosed: Yes  
Contiguous:  
Yes  
Permitted: Yes  
Wet Space: No  
Addition: No  
Conversion: No

## 4 Floor 1 - Bath



Dimensions: 6'1" x 6'6"  
Area: 39 sq. ft  
Counted as Living Area:  
Yes

Heated: Yes  
Finished: Yes  
Enclosed: Yes  
Contiguous:  
Yes  
Permitted: Yes  
Wet Space: Yes  
Addition: No  
Conversion: No

## 5 Floor 1 - Dining Area



Dimensions: 7'8" x 12'4"  
Area: 75 sq. ft  
Counted as Living Area:  
Yes

Heated: Yes  
Finished: Yes  
Enclosed: Yes  
Contiguous:  
Yes  
Permitted: Yes  
Wet Space: No  
Addition: No  
Conversion: No

# Elleray House, Pembroke Road,4,Woking,United kingdom, 4

## 6 Floor 1 - Living Room



Dimensions: 16'8" x 18'1"  
Area: 234 sq. ft  
Counted as Living Area:  
Yes

Heated: Yes  
Finished: Yes  
Enclosed: Yes  
Contiguous:  
Yes  
Permitted: Yes  
Wet Space: No  
Addition: No  
Conversion: No

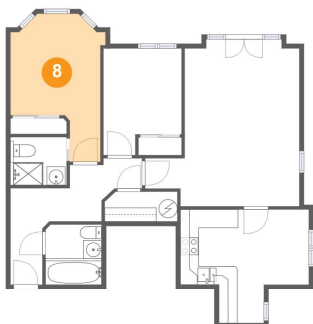
## 7 Floor 1 - Bath



Dimensions: 5'9" x 5'3"  
Area: 32 sq. ft  
Counted as Living Area:  
Yes

Heated: Yes  
Finished: Yes  
Enclosed: Yes  
Contiguous:  
Yes  
Permitted: Yes  
Wet Space: Yes  
Addition: No  
Conversion: No

## 8 Floor 1 - Primary Bedroom

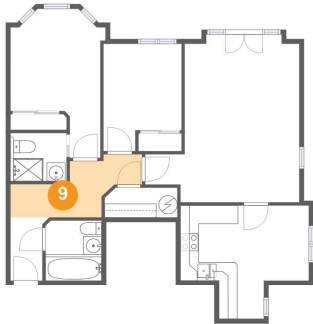


Dimensions: 10'3" x 16'0"  
Area: 117 sq. ft  
Counted as Living Area:  
Yes

Heated: Yes  
Finished: Yes  
Enclosed: Yes  
Contiguous:  
Yes  
Permitted: Yes  
Wet Space: No  
Addition: No  
Conversion: No

# Elleray House, Pembroke Road,4,Woking,United kingdom, 4

## 9 Floor 1 - Hall



Dimensions: 9'10" x 6'1"  
Area: 59 sq. ft  
Counted as Living Area:  
Yes

Heated: Yes  
Finished: Yes  
Enclosed: Yes  
Contiguous:  
Yes  
Permitted: Yes  
Wet Space: No  
Addition: No  
Conversion: No