



# VILLAGE ESTATES

• EST.1993 •



93 Main Road, Sidcup, Kent DA14 6ND

Tel: 0208 302 1002

[www.village-estates.com](http://www.village-estates.com)

Email: [sidcup@village-estates.com](mailto:sidcup@village-estates.com)



**SPACIOUS DUPLEX APARTMENT**

**MODERN KITCHEN AND  
BATHROOM**

**ALLOCATED PARKING**

**TWO BEDROOMS**

**LARGE LIVING AREA**

**SHORT WALK TO SIDCUP  
STATION**



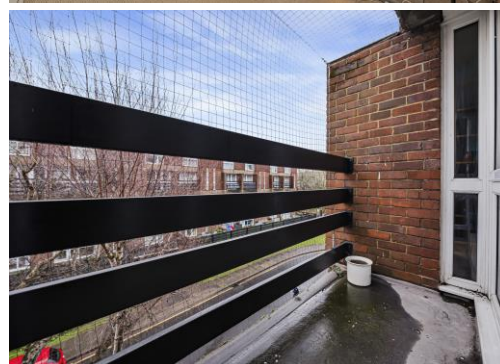
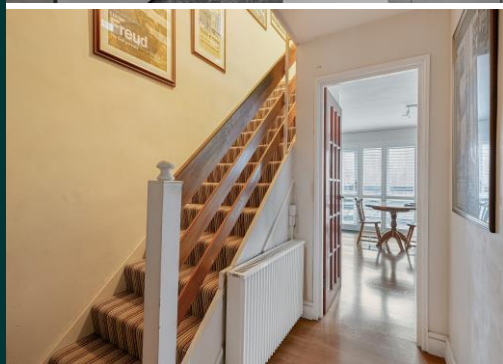
**11 Buckthorn House  
Longlands Road  
Sidcup, DA15 7NA**

**Guide Price £300,000 -  
£320,000**



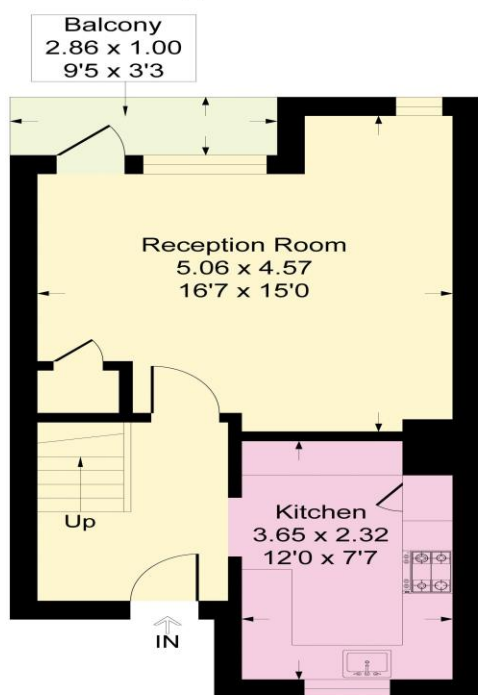
## SPACIOUS TWO BEDROOM DUPLEX APARTMENT!

Based just a very short walk from Sidcup station and the local amenities is this generously sized property, perfect for any first-time buyers or commuters. This fantastic apartment is set over two storeys and offers a great amount of space to enjoy. The home offers a modern kitchen downstairs and a large living dining area, providing a great place to relax and entertain. Upstairs are two good sized bedrooms, alongside the immaculate family bathroom. The property offers well-presented communal gardens and allocated parking. We highly recommend viewing this exceptional home.

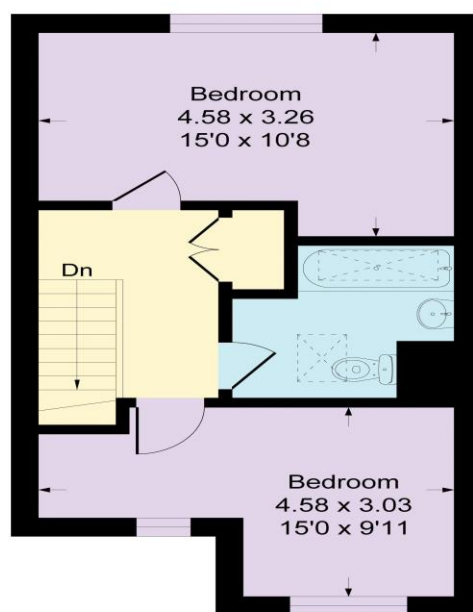


### Buckthorn House, Longlands Road, DA15

Approximate Gross Internal Area = 74.1 sq m / 798 sq ft



Ground Floor



First Floor



### CONSUMER PROTECTION FROM UNFAIR TRADING REGULATIONS 2008

Please note that any services, heating system or appliances have not been tested, and no warranty can be given or implied as to their working order. You are advised to obtain verification from your solicitor or surveyor. References to the tenure of a property are based on information supplied by the seller. We have not had sight of the title documents and a buyer is advised to obtain verification from their solicitor. Items shown in photographs are not included unless specifically mentioned within the sales particulars, but may be available by separate negotiation. Whilst every attempt has been made to ensure the accuracy of the floor plan contained here, measurements of doors, windows, rooms and any other items are approximate and no responsibility is taken for any error, omission, or mis-statement. We advise you to book an appointment to view before embarking on any journey to see a property, and check its availability. The accuracy of these details are not guaranteed and they do not form part of the contract.