



# VILLAGE ESTATES

• EST.1993 •



93 Main Road, Sidcup, Kent DA14 6ND

Tel: 0208 302 1002

[www.village-estates.com](http://www.village-estates.com)

Email: [sidcup@village-estates.com](mailto:sidcup@village-estates.com)



**NO ONWARD CHAIN**

**DRIVEWAY PARKING**

**KITCHEN/DINER**

**SPACIOUS GARDEN**

**SOUGHT AFTER LOCATION**

**EXCELLENT TRANSPORT LINKS**



**91 Longmead Drive**  
Sidcup, DA14 4NY

**Guide Price £500,000 -  
£525,000**

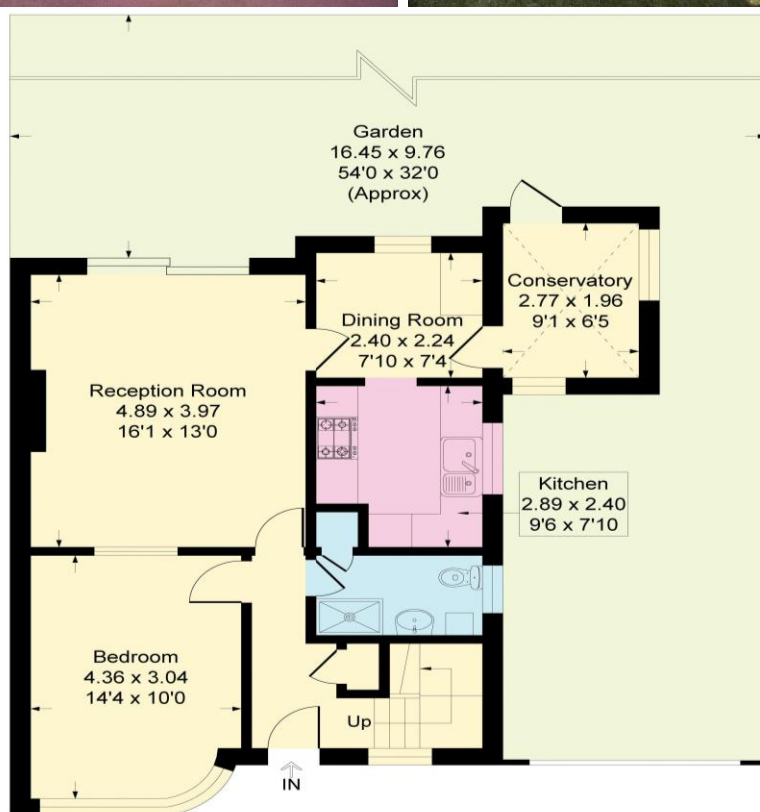


**THREE BEDROOM HOME WITH SPACIOUS GARDEN!** Village Estates are proud to present this semi-detached home close to local amenities and transport links. New to the market, this property offers a great amount of space for the next owners to make their own. This semi-detached home boasts a large living area, leading through to the kitchen/diner and the addition of a conservatory. There are three great sized bedrooms with plenty of storage space, along with the family bathroom. There is a spacious driveway to the front suitable for multiple vehicles. The rear garden will offer an exceptional space for any green fingered buyer, perfect for the whole family. Call now to book your appointment.

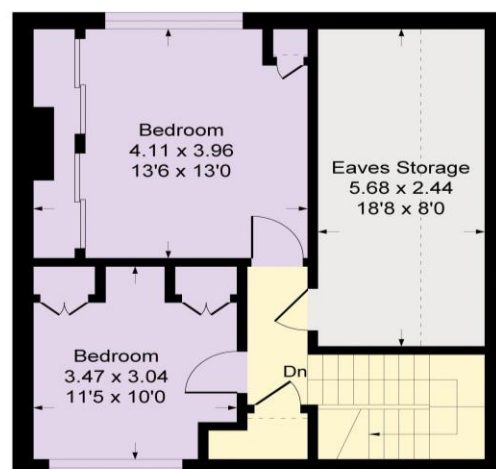


**Longmead Drive, DA14**

Approximate Gross Internal Area  
100.0 sq m / 1077 sq ft



**Ground Floor**



**First Floor**

**CONSUMER PROTECTION FROM UNFAIR TRADING REGULATIONS 2008**

Please note that any services, heating system or appliances have not been tested, and no warranty can be given or implied as to their working order. You are advised to obtain verification from your solicitor or surveyor. References to the tenure of a property are based on information supplied by the seller. We have not had sight of the title documents and a buyer is advised to obtain verification from their solicitor. Items shown in photographs are not included unless specifically mentioned within the sales particulars, but may be available by separate negotiation. Whilst every attempt has been made to ensure the accuracy of the floor plan contained here, measurements of doors, windows, rooms and any other items are approximate and no responsibility is taken for any error, omission, or mis-statement. We advise you to book an appointment to view before embarking on any journey to see a property, and check its availability. The accuracy of these details are not guaranteed and they do not form part of the contract.