



VILLAGE ESTATES

• EST.1993 •



93 Main Road, Sidcup, Kent DA14 6ND

Tel: 0208 302 1002

www.village-estates.com

Email: sidcup@village-estates.com



NO ONWARD CHAIN
DRIVEWAY AND GARAGE
CLOSE TO ALL AMENITIES

**POPULAR RESIDENTIAL
LOCATION**
IDEAL FAMILY HOME
THREE BEDROOMS



13 Felton Lea
Sidcup, DA14 6BA

Offers in Excess of
£500,000

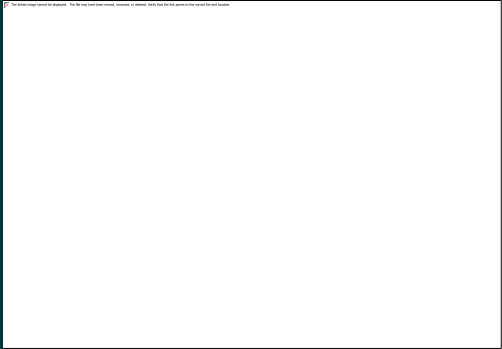
NO ONWARD CHAIN! Village Estates are delighted to welcome to the market this three-bedroom semi-detached home, perfect for any growing family. Based in a sought-after location close to all amenities, this home is ready for the next owners to make their own. The property offers an open plan living and dining area, fitted kitchen and a downstairs cloakroom. There are three great sized bedrooms, alongside the family bathroom. The property boasts off street parking and a spacious garage offering plenty of storage. The rear garden will provide the perfect place to enjoy in the summer. Call now to book your viewing.

EPC RATING: D

COUNCIL TAX BAND: E

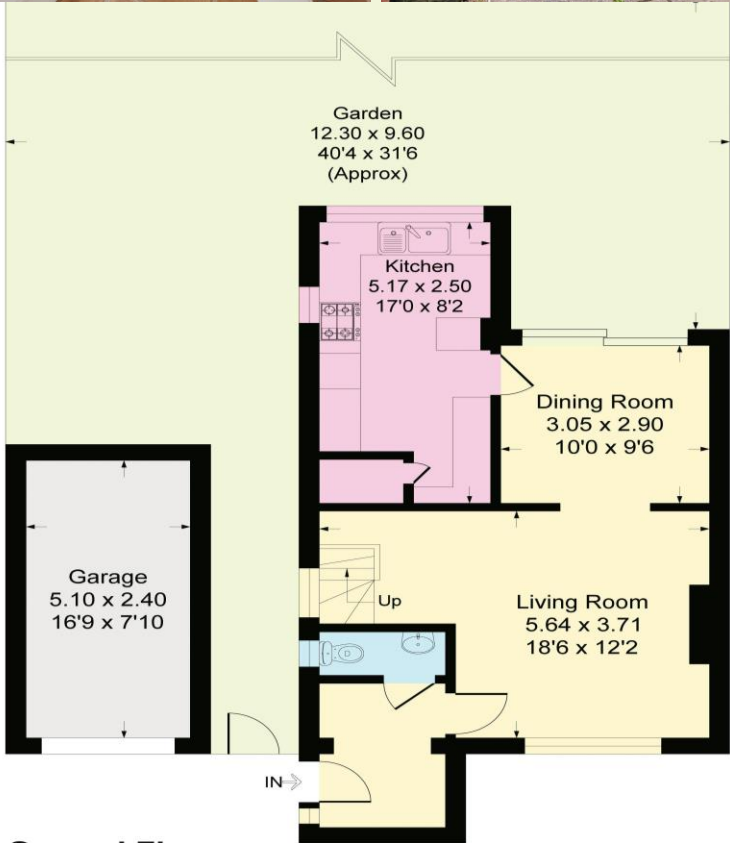
TENURE: Freehold

LEASE TERM: Not Applicable

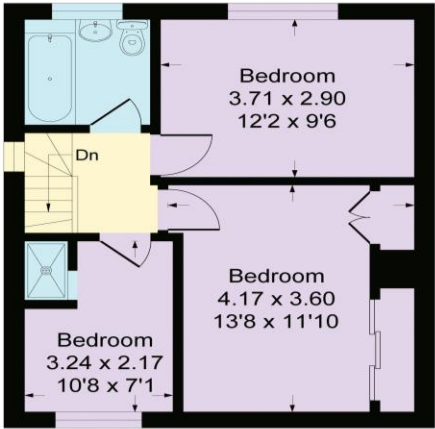


Felton Lea, DA14

Approximate Gross Internal Area
90.6 sq m / 976 sq ft
Garage = 12.2 sq m / 132 sq ft
Total = 102.8 sq m / 1108 sq ft



Ground Floor



First Floor

CONSUMER PROTECTION FROM UNFAIR TRADING REGULATIONS 2008

Please note that any services, heating system or appliances have not been tested, and no warranty can be given or implied as to their working order. You are advised to obtain verification from your solicitor or surveyor. References to the tenure of a property are based on information supplied by the seller. We have not had sight of the title documents and a buyer is advised to obtain verification from their solicitor. Items shown in photographs are not included unless specifically mentioned within the sales particulars, but may be available by separate negotiation. Whilst every attempt has been made to ensure the accuracy of the floor plan contained here, measurements of doors, windows, rooms and any other items are approximate and no responsibility is taken for any error, omission, or mis-statement. We advise you to book an appointment to view before embarking on any journey to see a property, and check its availability. The accuracy of these details are not guaranteed and they do not form part of the contract.