



VILLAGE ESTATES

• EST.1993 •



93 Main Road, Sidcup, Kent DA14 6ND

Tel: 0208 302 1002

www.village-estates.com

Email: sidcup@village-estates.com



**IN NEED OF COSMETIC
UPDATING**

TWO RECEPTIONS

OFF STREET PARKING

WELL PROPORTIONED ROOMS

CUL DE SAC LOCATION

NO FORWARD CHAIN



48 Cowper Close
Welling, DA16 2JT

**Guide Price £350,000 -
£365,000**

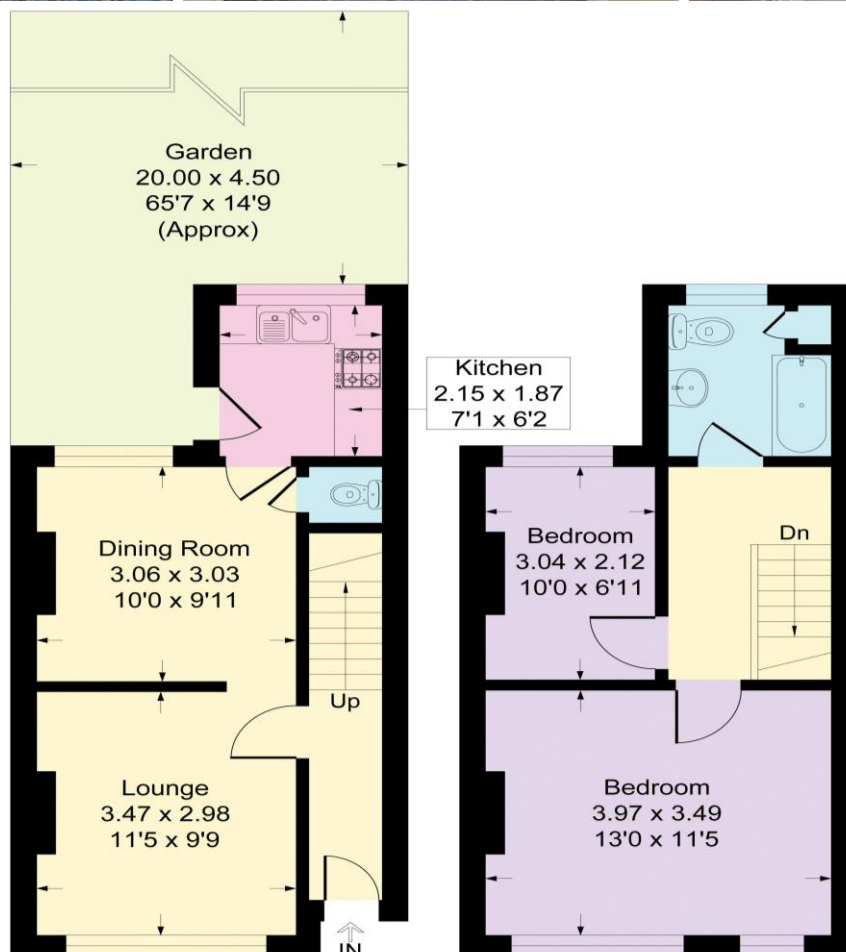
Offered with no chain! Based in a sought-after cul-de-sac location this well proportioned Two bedroom property offers a blank canvass for any buyer looking to get on the property ladder. The home offers two receptions a spacious 65ft rear garden and off street parking.

EPC RATING: D

COUNCIL TAX BAND: C

TENURE: Freehold

LEASE TERM: Not Applicable



CONSUMER PROTECTION FROM UNFAIR TRADING REGULATIONS 2008

Please note that any services, heating system or appliances have not been tested, and no warranty can be given or implied as to their working order. You are advised to obtain verification from your solicitor or surveyor. References to the tenure of a property are based on information supplied by the seller. We have not had sight of the title documents and a buyer is advised to obtain verification from their solicitor. Items shown in photographs are not included unless specifically mentioned within the sales particulars, but may be available by separate negotiation. Whilst every attempt has been made to ensure the accuracy of the floor plan contained here, measurements of doors, windows, rooms and any other items are approximate and no responsibility is taken for any error, omission, or mis-statement. We advise you to book an appointment to view before embarking on any journey to see a property, and check its availability. The accuracy of these details are not guaranteed and they do not form part of the contract.