



VILLAGE ESTATES

• EST.1993 •



93 Main Road, Sidcup, Kent DA14 6ND

Tel: 0208 302 1002

www.village-estates.com

Email: sidcup@village-estates.com



NO ONWARD CHAIN
EXTENDED INTO LOFT
DRIVEWAY AND GARAGE

SOUGHT AFTER LOCATION
SPACIOUS GARDEN
IDEAL FAMILY HOME

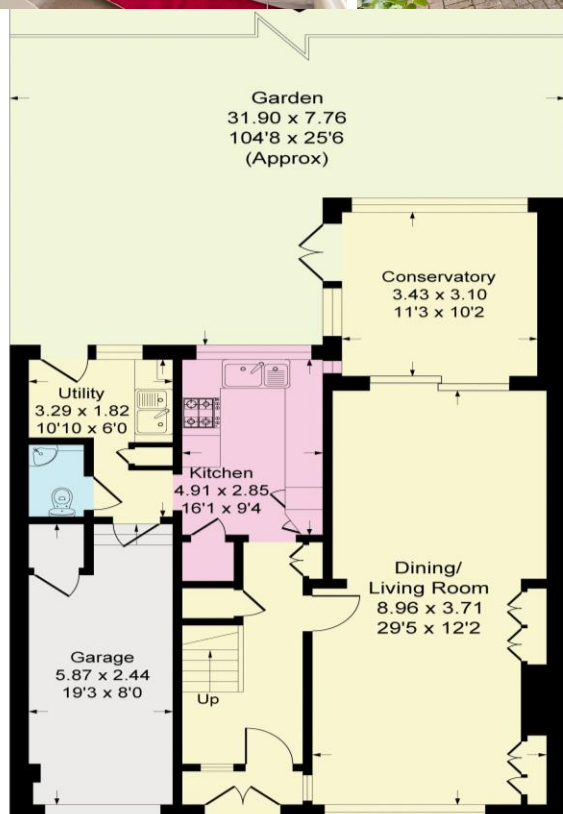
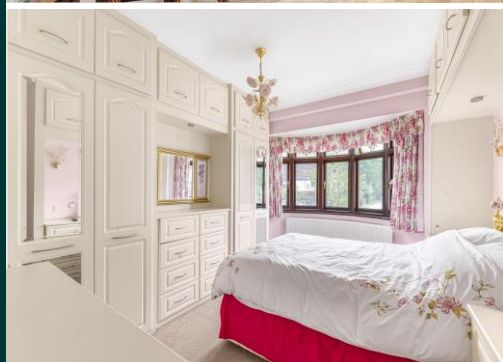


108 Birchwood Avenue
Sidcup, DA14 4JU

£850,000

NO ONWARD CHAIN! EXTENDED 4/5 BEDROOM FAMILY HOME IN A SOUGHT-AFTER LOCATION! Village Estates are delighted to present this spacious family home based in a popular location. This large home offers a huge amount of space and a variety of living options that is sure to suit any growing family. The property offers a spacious living room, leading through to a great dining area, the addition of a conservatory offers even more space to enjoy.

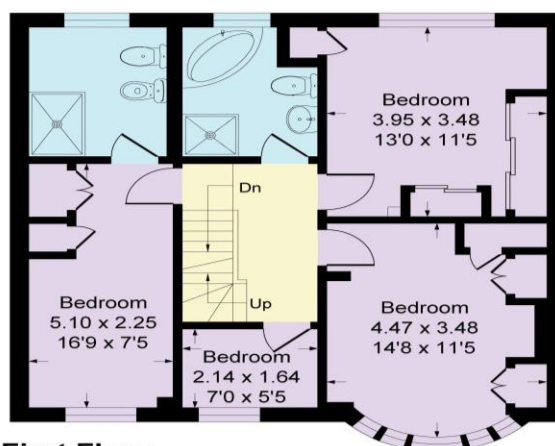
The fitted kitchen is ready for the next owners, with the downstairs also offering a separate utility room and cloakroom. The first floor boasts three great sized double bedrooms; with the extended bedroom featuring its own en-suite bathroom. There is a spacious family bathroom as well as an additional bedroom currently used as a home office. The loft extension homes a huge amount of storage, with a stunning double bedroom with Juliette balcony overlooking the garden, there is another en-suite bathroom furnishing this exceptional room. The rear garden will offer a great outdoor place for the next owners, with its well-maintained patio leading up to the laid lawn, with ample space to entertain, relax and enjoy. The large driveway offers plenty of parking, with the spacious garage providing either more parking or a great amount of storage. We highly recommend viewing this stunning home.



Ground Floor



Second Floor



First Floor

CONSUMER PROTECTION FROM UNFAIR TRADING REGULATIONS 2008

Please note that any services, heating system or appliances have not been tested, and no warranty can be given or implied as to their working order. You are advised to obtain verification from your solicitor or surveyor. References to the tenure of a property are based on information supplied by the seller. We have not had sight of the title documents and a buyer is advised to obtain verification from their solicitor. Items shown in photographs are not included unless specifically mentioned within the sales particulars, but may be available by separate negotiation. Whilst every attempt has been made to ensure the accuracy of the floor plan contained here, measurements of doors, windows, rooms and any other items are approximate and no responsibility is taken for any error, omission, or mis-statement. We advise you to book an appointment to view before embarking on any journey to see a property, and check its availability. The accuracy of these details are not guaranteed and they do not form part of the contract.