



VILLAGE ESTATES

• EST.1993 •



93 Main Road, Sidcup, Kent DA14 6ND

Tel: 0208 302 1002

www.village-estates.com

Email: sidcup@village-estates.com



NO ONWARD CHAIN

FOUR BEDROOMS

DRIVEWAY AND GARAGE

SOUGHT AFTER LOCATION

LARGE GARDEN

THREE RECETPION ROOMS



43 Crescent Road
Sidcup, DA15 7HW

**Guide Price £1,100,000 -
£1,200,000**

Located in one of Sidcup's most prestigious roads, Village Estates are pleased to offer you this large four bedroom detached residence within the Christchurch conservation area benefitting from ample off street parking, a 120ft south facing rear garden and No Forward Chain. Your early viewing is recommended to avoid disappointment.

EPC RATING: D

COUNCIL TAX BAND: G

TENURE: Freehold

LEASE TERM: Not Applicable

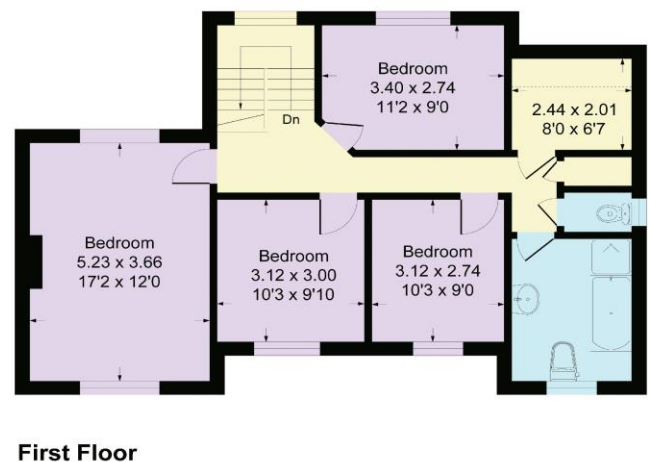
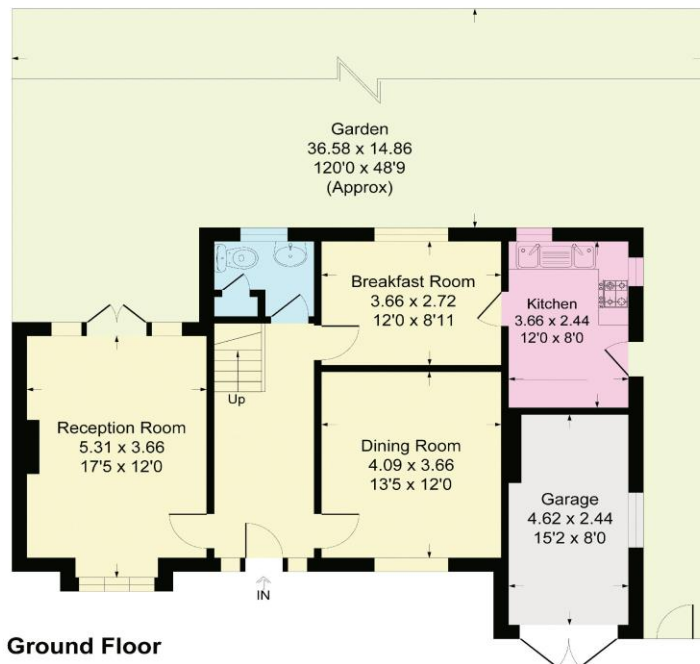


Crescent Road, DA15

Approximate Gross Internal Area = 148.1 sq m / 1594 sq ft

Garage = 11.2 sq m / 121 sq ft

Total = 159.4 sq m / 1716 sq ft



This plan is for layout guidance only. Not drawn to scale unless stated. Windows and door openings are approximate. Whilst every care is taken in the preparation of this plan, please check all dimensions, shapes and compass bearings before making any decisions reliant upon them.
Produced By Planpix

CONSUMER PROTECTION FROM UNFAIR TRADING REGULATIONS 2008

Please note that any services, heating system or appliances have not been tested, and no warranty can be given or implied as to their working order. You are advised to obtain verification from your solicitor or surveyor. References to the tenure of a property are based on information supplied by the seller. We have not had sight of the title documents and a buyer is advised to obtain verification from their solicitor. Items shown in photographs are not included unless specifically mentioned within the sales particulars, but may be available by separate negotiation. Whilst every attempt has been made to ensure the accuracy of the floor plan contained here, measurements of doors, windows, rooms and any other items are approximate and no responsibility is taken for any error, omission, or mis-statement. We advise you to book an appointment to view before embarking on any journey to see a property, and check its availability. The accuracy of these details are not guaranteed and they do not form part of the contract.