



# VILLAGE ESTATES

• EST.1993 •



93 Main Road, Sidcup, Kent DA14 6ND

Tel: 0208 302 1002

[www.village-estates.com](http://www.village-estates.com)

Email: [sidcup@village-estates.com](mailto:sidcup@village-estates.com)



**Exclusive development of just 5 luxury apartments**

**On-site EV charging point**

**Close to local shops and amenities**

**Private patios or balconies to all apartments**

**Allocated parking**

**Excellent transport links via Falconwood mainline station**



**MARTEL COURT**

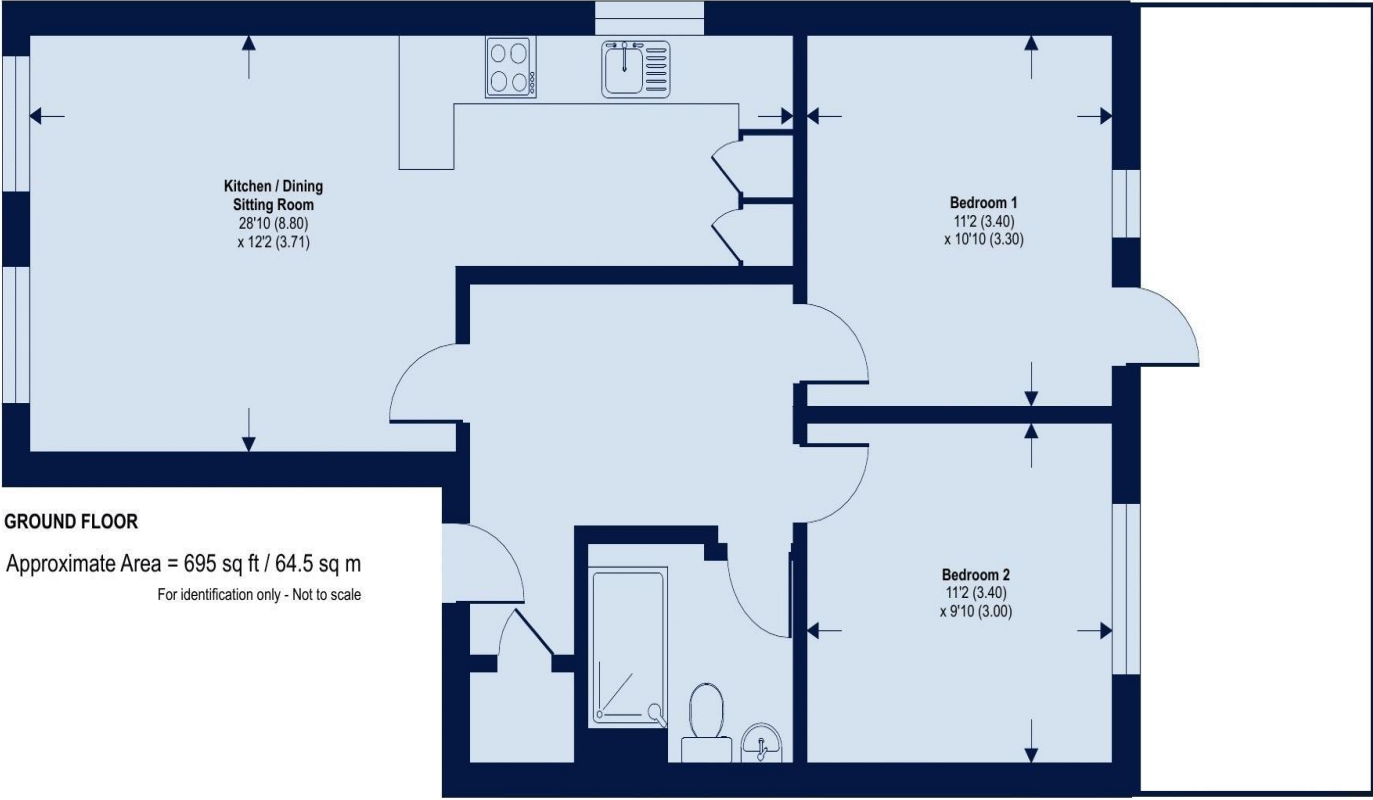
BLACKFEN, LONDON



**Flat 1 Martel Court**  
**28 Blackfen Road**  
**Sidcup, DA15 8SN**

**£400,000**

Welcome to Martel Court, an exceptional new development on the sought-after Blackfen Road, offering a stylish collection of just five exclusive apartments. This boutique development comprises a mix of two spacious 2-bedroom apartments, three contemporary 1-bedroom homes, and a standout penthouse 1-bedroom apartment — all thoughtfully designed for modern living. Each residence boasts either a private patio or balcony, creating the perfect space for relaxation or entertaining. With allocated parking available for most units, plus the convenience of an on-site EV charging point, Martel Court is perfectly equipped for today's lifestyle needs. Ideally located close to an array of local amenities, including a variety of shops and eateries, the development also benefits from excellent transport links. Falconwood mainline station is nearby, providing direct routes into central London and beyond, making commuting or exploring the city effortless. Whether you're a first-time buyer, downsizer, or investor, Martel Court offers a rare opportunity to secure a home in a well-connected and desirable location.



**CONSUMER PROTECTION FROM UNFAIR TRADING REGULATIONS 2008**

Please note that any services, heating system or appliances have not been tested, and no warranty can be given or implied as to their working order. You are advised to obtain verification from your solicitor or surveyor. References to the tenure of a property are based on information supplied by the seller. We have not had sight of the title documents and a buyer is advised to obtain verification from their solicitor. Items shown in photographs are not included unless specifically mentioned within the sales particulars, but may be available by separate negotiation. Whilst every attempt has been made to ensure the accuracy of the floor plan contained here, measurements of doors, windows, rooms and any other items are approximate and no responsibility is taken for any error, omission, or mis-statement. We advise you to book an appointment to view before embarking on any journey to see a property, and check its availability. The accuracy of these details are not guaranteed and they do not form part of the contract.