



VILLAGE ESTATES

• EST.1993 •



93 Main Road, Sidcup, Kent DA14 6ND

Tel: 0208 302 1002

www.village-estates.com

Email: sidcup@village-estates.com



**ENSUITE AND DRESSING AREA
TO BEDROOM ONE**

CENTRAL SIDCUP LOCATION

GARAGE AND DRIVE

98FT SOUTH FACING GARDEN

**CLOSE TO SIDCUP MAINLINE
STATION**

DOUBLE STOREY EXTENDED



**291 Old Farm Avenue
Sidcup, DA15 8AP**

**Guide Price £700,000-
£725,000**

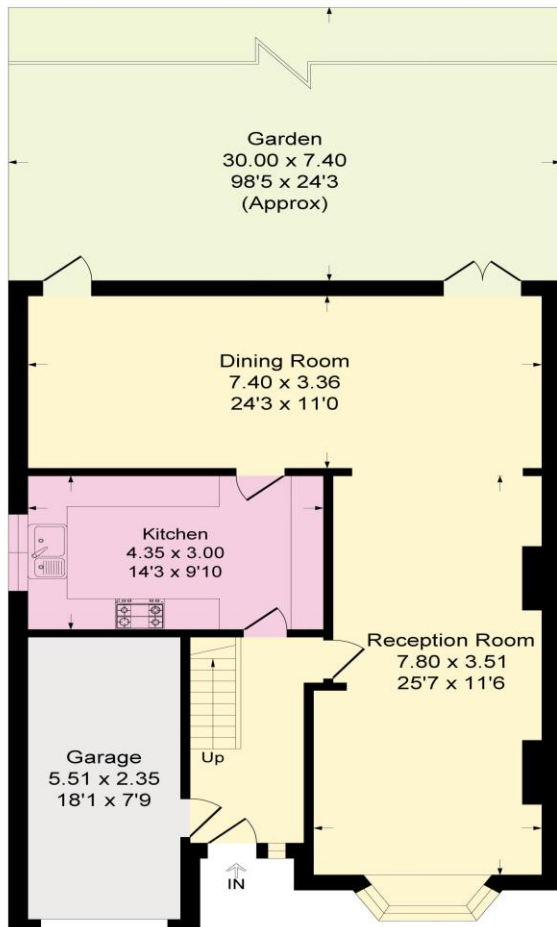
Three/Four bedroom, Master with Ensuite and Dressing Area, double storey extended and modernised semi detached family home with 98ft south facing garden, located within a short walk to Sidcup mainline train station (Zone 5). We feel this would be an ideal family home, with schools, parks, shops and leisure

EPC RATING: C

COUNCIL TAX BAND: E

TENURE: Freehold

LEASE TERM: Not Applicable



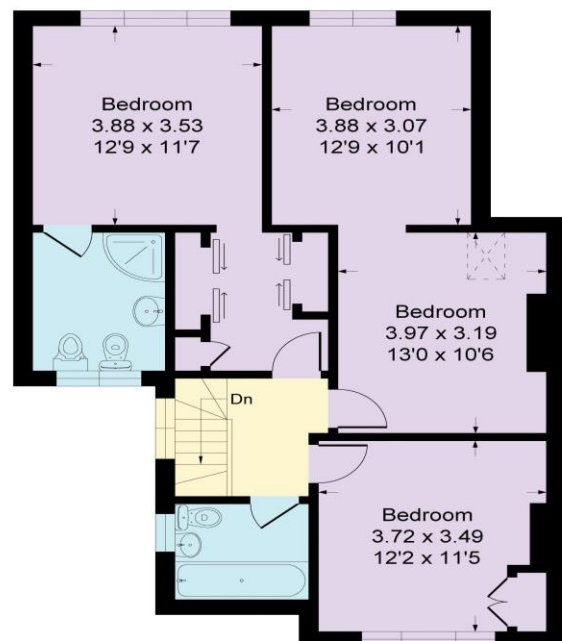
Old Farm Avenue, DA15

Approximate Gross Internal Area.

153.4 sq m / 1652 sq ft

Garage = 12.9 sq m / 139 sq ft

Total = 166.4 sq m / 1791 sq ft



CONSUMER PROTECTION FROM UNFAIR TRADING REGULATIONS 2008

Please note that any services, heating system or appliances have not been tested, and no warranty can be given or implied as to their working order. You are advised to obtain verification from your solicitor or surveyor. References to the tenure of a property are based on information supplied by the seller. We have not had sight of the title documents and a buyer is advised to obtain verification from their solicitor. Items shown in photographs are not included unless specifically mentioned within the sales particulars, but may be available by separate negotiation. Whilst every attempt has been made to ensure the accuracy of the floor plan contained here, measurements of doors, windows, rooms and any other items are approximate and no responsibility is taken for any error, omission, or mis-statement. We advise you to book an appointment to view before embarking on any journey to see a property, and check its availability. The accuracy of these details are not guaranteed and they do not form part of the contract.