



VILLAGE ESTATES

• EST.1993 •



93 Main Road, Sidcup, Kent DA14 6ND

Tel: 0208 302 1002

www.village-estates.com

Email: sidcup@village-estates.com



NO CHAIN

GREAT LOCATION

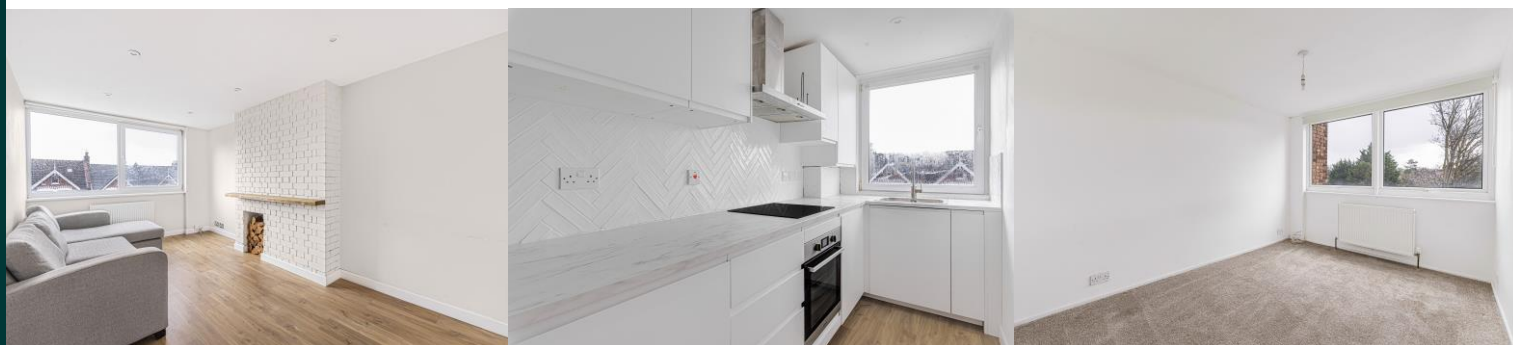
SPACIOUS LIVING ROOM

PARKING AND GARAGE

HIGH STANDARD

PRESENTATION

GOOD RENTAL RETURN



14 Elm Parade Main Road
Sidcup, DA14 6NF

Guide Price £215000 -
£225000

NO ONWARD CHAIN! Whether you are a first-time buyer looking for your step onto the property ladder, or an investor looking to add to a portfolio, this stylish one-bedroom apartment in the heart of Sidcup is sure to impress. Finished to a very high standard and ready to move straight into, this property also boasts its own garage and parking, with all other amenities just a few steps away.

EPC RATING: D

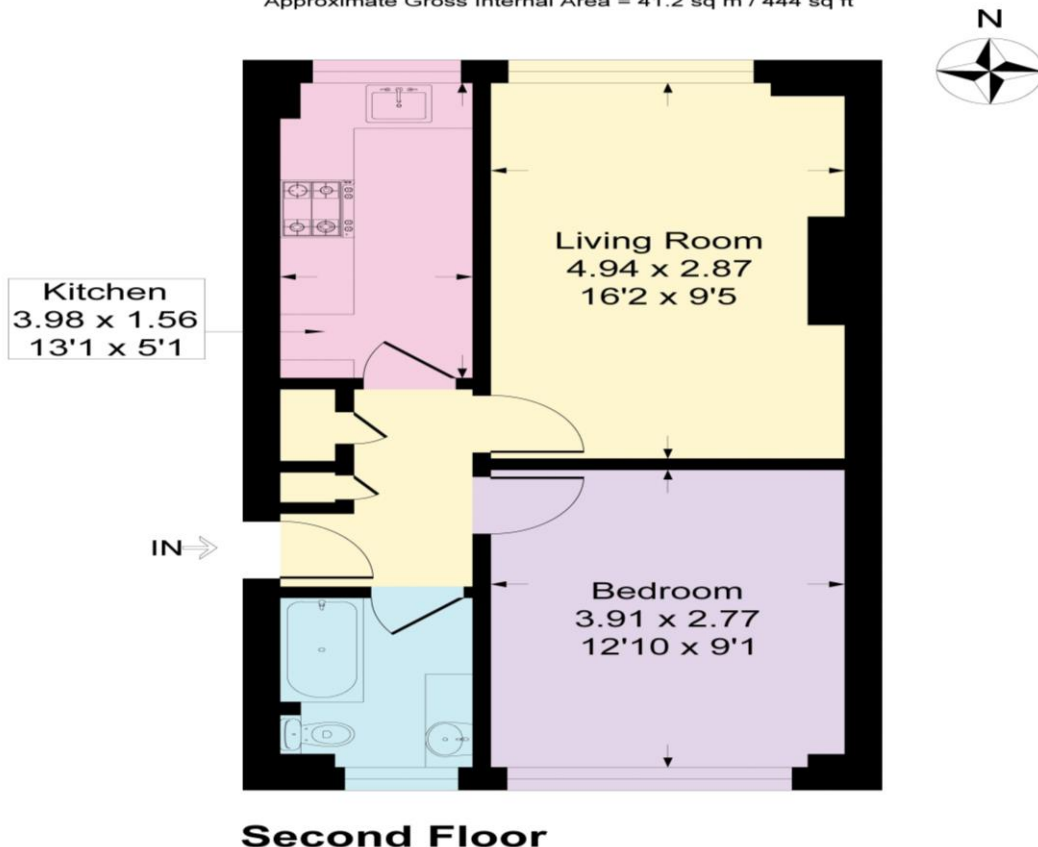
COUNCIL TAX BAND: B

TENURE: Leasehold

LEASE TERM: 189 Years from 25 March 1976



Approximate Gross Internal Area = 41.2 sq m / 444 sq ft



CONSUMER PROTECTION FROM UNFAIR TRADING REGULATIONS 2008

Please note that any services, heating system or appliances have not been tested, and no warranty can be given or implied as to their working order. You are advised to obtain verification from your solicitor or surveyor. References to the tenure of a property are based on information supplied by the seller. We have not had sight of the title documents and a buyer is advised to obtain verification from their solicitor. Items shown in photographs are not included unless specifically mentioned within the sales particulars, but may be available by separate negotiation. Whilst every attempt has been made to ensure the accuracy of the floor plan contained here, measurements of doors, windows, rooms and any other items are approximate and no responsibility is taken for any error, omission, or mis-statement. We advise you to book an appointment to view before embarking on any journey to see a property, and check its availability. The accuracy of these details are not guaranteed and they do not form part of the contract.