



VILLAGE ESTATES

• EST.1993 •



93 Main Road, Sidcup, Kent DA14 6ND

Tel: 0208 302 1002

www.village-estates.com

Email: sidcup@village-estates.com



**PREMIER ROAD IN CONSERVATION
AREA**

**AMPLE POTENTIAL TO MODERNISE
AND IMPROVE**

EASY REACH OF AMENITIES

GARAGE AND AMPLE DRIVE

**WALKING DISTANCE TO SIDCUP
STATION**

LARGER THAN AVERAGE CHALET HOME



2 Braundton Avenue
Sidcup, DA15 8EW

£685,000

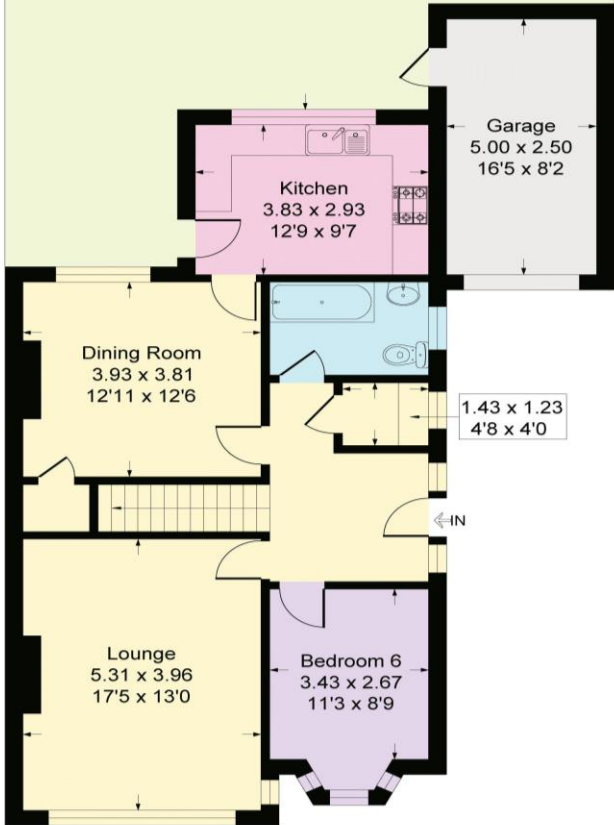
A fantastic opportunity to acquire the largest form of chalet design upon initial build in the Sidcup area. Braundton Avenue is a peaceful road forming part of the Willersley Conservation area where the architecture is preserved. This home requires complete renovation and therefore presents excellent scope to create a tailor-made home with garden, garage and drive while living within a prestigious road in the local area. Schools within Burnt Oak Lane are within walking distance, along with Old Farm Park and Sidcup mainline station - serving London Bridge, Waterloo East and Charing Cross.

EPC RATING: D

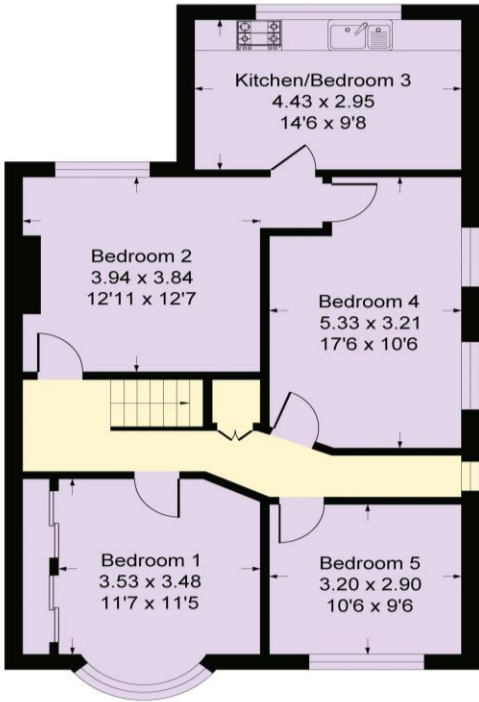
COUNCIL TAX BAND: F

TENURE: Freehold

LEASE TERM: Not Applicable



Ground Floor



First Floor

CONSUMER PROTECTION FROM UNFAIR TRADING REGULATIONS 2008

Please note that any services, heating system or appliances have not been tested, and no warranty can be given or implied as to their working order. You are advised to obtain verification from your solicitor or surveyor. References to the tenure of a property are based on information supplied by the seller. We have not had sight of the title documents and a buyer is advised to obtain verification from their solicitor. Items shown in photographs are not included unless specifically mentioned within the sales particulars, but may be available by separate negotiation. Whilst every attempt has been made to ensure the accuracy of the floor plan contained here, measurements of doors, windows, rooms and any other items are approximate and no responsibility is taken for any error, omission, or mis-statement. We advise you to book an appointment to view before embarking on any journey to see a property, and check its availability. The accuracy of these details are not guaranteed and they do not form part of the contract.