



# VILLAGE ESTATES

• EST.1993 •



93 Main Road, Sidcup, Kent DA14 6ND

Tel: 0208 302 1002

[www.village-estates.com](http://www.village-estates.com)

Email: [sidcup@village-estates.com](mailto:sidcup@village-estates.com)



**En Suite Shower Room**

**Gated Parking (Details Tba)**

**Close To Sidcup High Street**

**Under Floor Heating Throughout**

**Guest Suite Available**

**Spacious Accommodation**



**14 Kingswood Court**  
Sidcup, DA14 6FH

**Guide Price £350,000-£365,000**



Arguably the best modern retirement building in Sidcup, specifically for people aged over 60. We are excited to present a two double bedroom, two bathroom first floor flat with the added convenience of no forward chain. Depending on your preferences many residents use the second bedroom as a second reception room/dining room, a number of which are downsizing from a house and surprised by the amount of space on offer within this flat. Parking is available, we urge you to call us so we can better explain the finer details. A very secure building with a warden that works part time through the week. Kingswood Court has a lovely community that regularly use the communal lounge and kitchen, whether that's for a coffee or a grouped get together/event.

**EPC RATING: C**

**COUNCIL TAX BAND:**

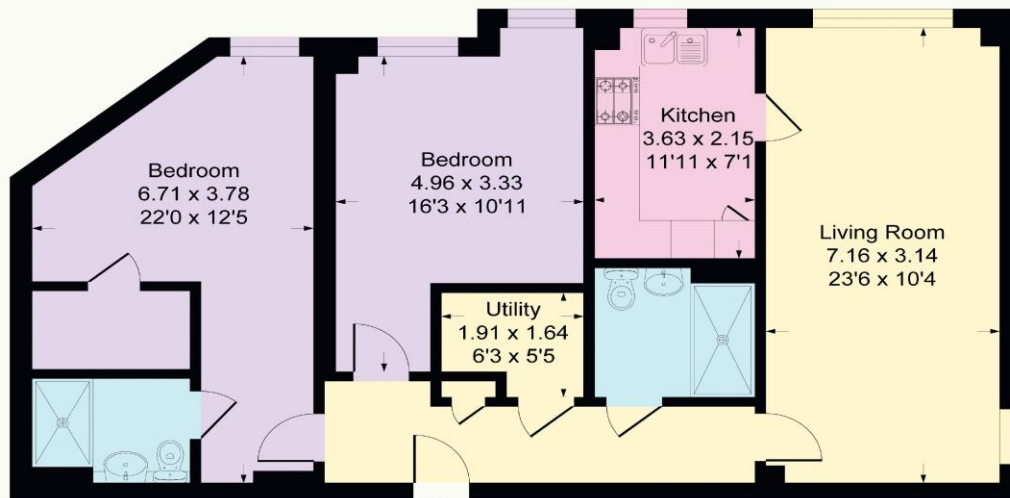
**TENURE: Leasehold**

**LEASE TERM: 990 Years**



## Kingswood Court, DA14

Approximate Gross Internal Area = 87.7 sq m / 944 sq ft



### CONSUMER PROTECTION FROM UNFAIR TRADING REGULATIONS 2008

Please note that any services, heating system or appliances have not been tested, and no warranty can be given or implied as to their working order. You are advised to obtain verification from your solicitor or surveyor. References to the tenure of a property are based on information supplied by the seller. We have not had sight of the title documents and a buyer is advised to obtain verification from their solicitor. Items shown in photographs are not included unless specifically mentioned within the sales particulars, but may be available by separate negotiation. Whilst every attempt has been made to ensure the accuracy of the floor plan contained here, measurements of doors, windows, rooms and any other items are approximate and no responsibility is taken for any error, omission, or mis-statement. We advise you to book an appointment to view before embarking on any journey to see a property, and check its availability. The accuracy of these details are not guaranteed and they do not form part of the contract.