



VILLAGE ESTATES

• EST.1993 •



93 Main Road, Sidcup, Kent DA14 6ND

Tel: 0208 302 1002

www.village-estates.com

Email: sidcup@village-estates.com



PATIO TO GARDEN

0.9 MILES > NEW ELTHAM TRAIN ST

CLOSE TO LOCAL SHOPS

VACANT AND NO CHAIN

CENTRAL SIDCUP LOCATION

ALLOCATED PARKING



Flat 2 297 Main Road
Sidcup, DA14 6QL

£285,000

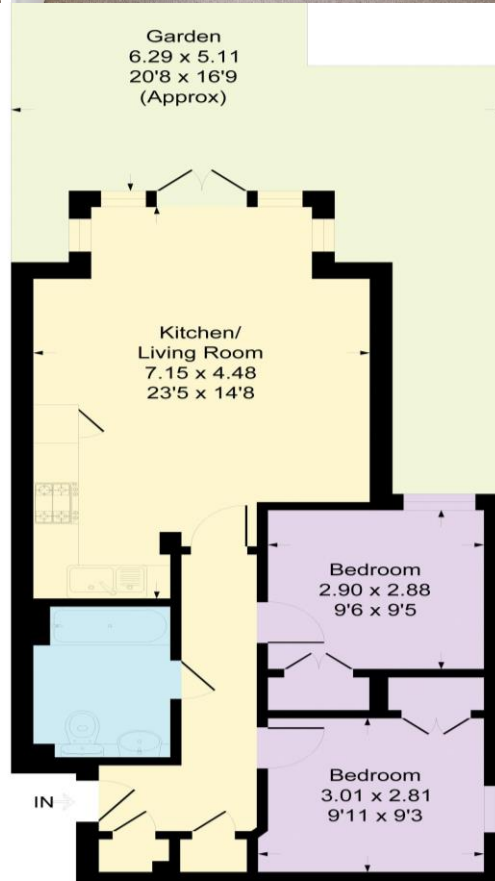
TWO BEDROOM south facing GROUND FLOOR APARTMENT with a PRIVATE PATIO onto garden, conveniently located for popular local shops and NEW ELTHAM TRAIN STATION (Zone 4). We feel this would be an ideal purchase for a FIRST TIME BUYER, with excellent size bedrooms and an allocated PARKING SPACE with additional visitor bays. Offered CHAIN FREE, your early viewing is recommended.

EPC RATING: B

COUNCIL TAX BAND: C

TENURE: Leasehold

LEASE TERM: 125 years from 29 September 2008



CONSUMER PROTECTION FROM UNFAIR TRADING REGULATIONS 2008

Please note that any services, heating system or appliances have not been tested, and no warranty can be given or implied as to their working order. You are advised to obtain verification from your solicitor or surveyor. References to the tenure of a property are based on information supplied by the seller. We have not had sight of the title documents and a buyer is advised to obtain verification from their solicitor. Items shown in photographs are not included unless specifically mentioned within the sales particulars, but may be available by separate negotiation. Whilst every attempt has been made to ensure the accuracy of the floor plan contained here, measurements of doors, windows, rooms and any other items are approximate and no responsibility is taken for any error, omission, or mis-statement. We advise you to book an appointment to view before embarking on any journey to see a property, and check its availability. The accuracy of these details are not guaranteed and they do not form part of the contract.