



VILLAGE ESTATES



93 Main Road, Sidcup, Kent DA14 6ND

Tel: 0208 302 1002

www.village-estates.com

Email: sidcup@village-estates.com



FOUR BEDROOM DETACHED
SHORT WALK TO SIDCUP HIGH STREET
WELL PRESENTED AND MAINTAINED

GARAGE AND DRIVE TO FRONT
67FT REAR GARDEN
PERIOD PROPERTY



7 Durham Road
Sidcup, DA14 6LH

£750,000

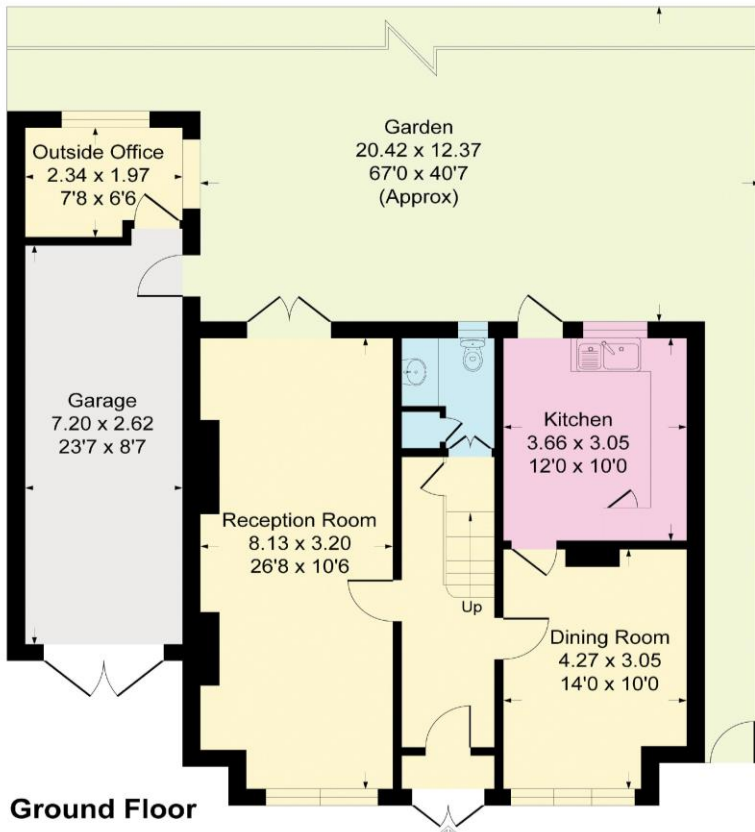
This characterful period detached home has four double bedrooms, modern kitchen/breakfast room, two reception rooms, utility room with downstairs WC, low maintenance garden, garage with parking to front and in a great catchment area for local schools, walking distance to Sidcup High Street. A MUST SEE!!!

EPC RATING: E

COUNCIL TAX BAND: E

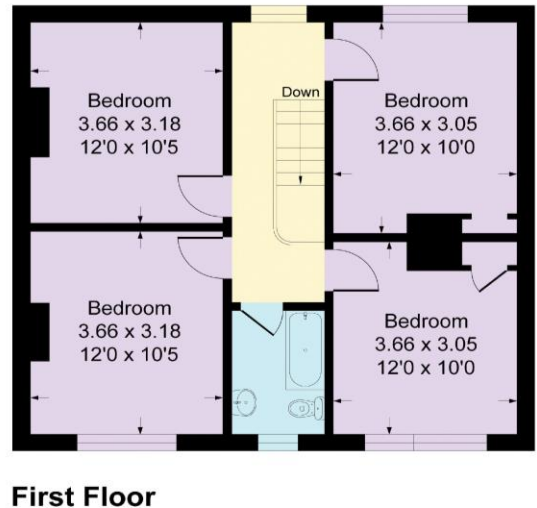
TENURE: Freehold

LEASE TERM: Not Applicable



Durham Road, DA14

Approximate Gross Internal Area = 129.7 sq m / 1397 sq ft
 Garage = 19.1 sq m / 206 sq ft
 Total = 148.8 sq m / 1603 sq ft



CONSUMER PROTECTION FROM UNFAIR TRADING REGULATIONS 2008

Please note that any services, heating system or appliances have not been tested, and no warranty can be given or implied as to their working order. You are advised to obtain verification from your solicitor or surveyor. References to the tenure of a property are based on information supplied by the seller. We have not had sight of the title documents and a buyer is advised to obtain verification from their solicitor. Items shown in photographs are not included unless specifically mentioned within the sales particulars, but may be available by separate negotiation. Whilst every attempt has been made to ensure the accuracy of the floor plan contained here, measurements of doors, windows, rooms and any other items are approximate and no responsibility is taken for any error, omission, or mis-statement. We advise you to book an appointment to view before embarking on any journey to see a property, and check its availability. The accuracy of these details are not guaranteed and they do not form part of the contract.