



VILLAGE ESTATES

• EST.1993 •



93 Main Road, Sidcup, Kent DA14 6ND

Tel: 0208 302 1002

www.village-estates.com

Email: sidcup@village-estates.com



EDWARDIAN CORBETT HOUSE
SOUTH FACING GARDEN WITH
SUMMERHOUSE
RETAINING MANY PERIOD FEATURES

OPEN PLAN KITCHEN/DINER
EXCELLENT TRANSPORT LINKS
CLOSE TO AMENITIES AND PARKLAND



50 Eltham Park Gardens
London, SE9 1AW

Guide Price £875,000-
£900,000

Don't miss this beautifully presented Edwardian semi-detached Corbett house, blending period charm with modern updates. Features include original fireplaces, intricate cornicing, and stripped pine doors. The property boasts a south-facing garden with a spacious 18'3 x 12'6 summerhouse, complete with power, lighting, and a decked veranda. Inside, you'll find four generously sized bedrooms, a bright lounge, a 23'2 x 14'2 fitted kitchen/diner, and a modern ground-floor shower room. Located on the park end of a highly sought-after road, you're steps away from Westmount Road's shops, including Ayres the bakers and the Long Pond Craft Alehouse. Early viewing is essential!

EPC RATING: E

COUNCIL TAX BAND: E

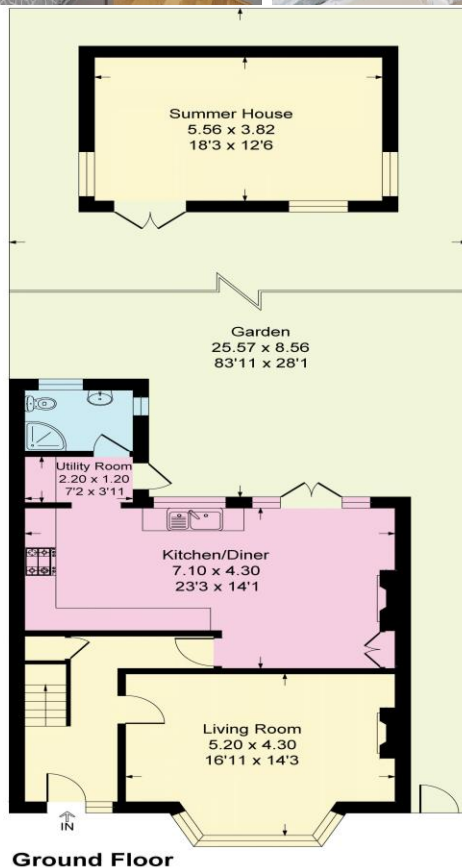
TENURE: Freehold

LEASE TERM: Not Applicable



Eltham Park Gardens, SE9

Approximate Gross Internal Area = 122.7 sq m / 1321 sq ft
 Outbuilding = 21.2 sq m / 229 sq ft
 Total = 143.9 sq m / 1550 sq ft



CONSUMER PROTECTION FROM UNFAIR TRADING REGULATIONS 2008

Please note that any services, heating system or appliances have not been tested, and no warranty can be given or implied as to their working order. You are advised to obtain verification from your solicitor or surveyor. References to the tenure of a property are based on information supplied by the seller. We have not had sight of the title documents and a buyer is advised to obtain verification from their solicitor. Items shown in photographs are not included unless specifically mentioned within the sales particulars, but may be available by separate negotiation. Whilst every attempt has been made to ensure the accuracy of the floor plan contained here, measurements of doors, windows, rooms and any other items are approximate and no responsibility is taken for any error, omission, or mis-statement. We advise you to book an appointment to view before embarking on any journey to see a property, and check its availability. The accuracy of these details are not guaranteed and they do not form part of the contract.