



VILLAGE ESTATES

• EST.1993 •



93 Main Road, Sidcup, Kent DA14 6ND

Tel: 0208 302 1002

www.village-estates.com

Email: sidcup@village-estates.com



Driveway For Two Cars

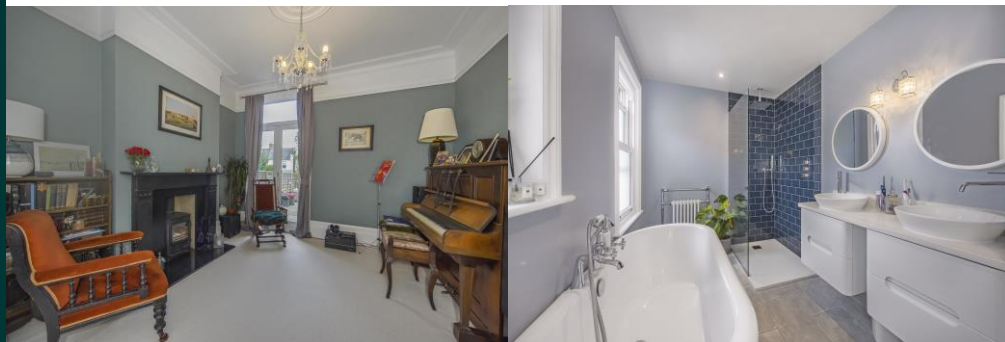
1 mile > Sidcup & New Eltham Stations

Period Features

Longlands Primary School

Attractive Brick Facade

Feature Kitchen Diner



249 Main Road
Sidcup, DA14 6QS

£750,000

Distinctive Victorian home positioned equidistant to both Sidcup and New Eltham mainline stations. A beautiful blend of period features and modern design can be found within this family residence. Just moments away from popular independent shops, Ayres Bakery, Carnivore Butchers and Greengrocers. The kitchen has been extended to provide ample living and dining space which is today a must have. Created with bi-folding doors, a pitched roof and large skylight to allow natural light to run through the back of the property.

EPC RATING: D

COUNCIL TAX BAND: E

TENURE: Freehold

LEASE TERM: Not Applicable



CONSUMER PROTECTION FROM UNFAIR TRADING REGULATIONS 2008

Please note that any services, heating system or appliances have not been tested, and no warranty can be given or implied as to their working order. You are advised to obtain verification from your solicitor or surveyor. References to the tenure of a property are based on information supplied by the seller. We have not had sight of the title documents and a buyer is advised to obtain verification from their solicitor. Items shown in photographs are not included unless specifically mentioned within the sales particulars, but may be available by separate negotiation. Whilst every attempt has been made to ensure the accuracy of the floor plan contained here, measurements of doors, windows, rooms and any other items are approximate and no responsibility is taken for any error, omission, or mis-statement. We advise you to book an appointment to view before embarking on any journey to see a property, and check its availability. The accuracy of these details are not guaranteed and they do not form part of the contract.