



# VILLAGE ESTATES



• EST.1993 •

93 Main Road, Sidcup, Kent DA14 6ND

Tel: 0208 302 1002

www.village-estates.com

Email: sidcup@village-estates.com



**Modern Shower Room**  
**Juliet Balcony | Garden Facing**  
**Available To Over 60s**

**Very Close To High Street**  
**Residents Parking**  
**Brand New Extended Lease**



**Flat 15 Glen Court**  
Station Rd, Sidcup, DA15 7JU

**£125,000**

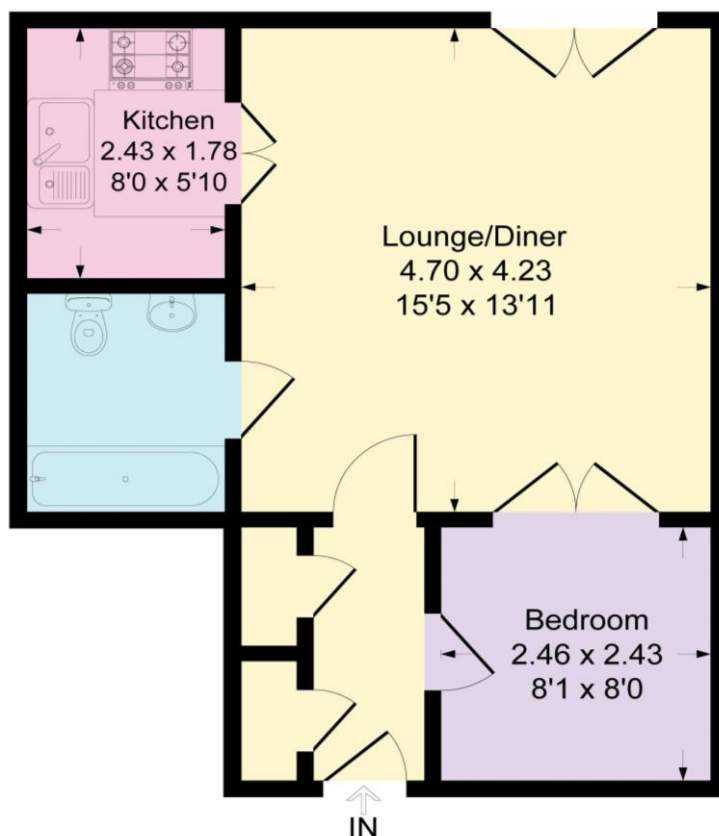
**A pleasant and well maintained one double bedroom first floor retirement flat (over 60's only) situated on the first floor. On site the building has a laundrette, communal lounge for those wanting to socialise, rear garden, building manager and parking for residents. Ready for immediate occupation with no forward chain. Conveniently situated just 100 metres from Sidcup high street offering an array of shops, cafes, restaurants, bars and grocery stores.**

**EPC RATING: B**

**COUNCIL TAX BAND: B**

**TENURE: Leasehold**

**LEASE TERM: Not Applicable**



**CONSUMER PROTECTION FROM UNFAIR TRADING REGULATIONS 2008**

Please note that any services, heating system or appliances have not been tested, and no warranty can be given or implied as to their working order. You are advised to obtain verification from your solicitor or surveyor. References to the tenure of a property are based on information supplied by the seller. We have not had sight of the title documents and a buyer is advised to obtain verification from their solicitor. Items shown in photographs are not included unless specifically mentioned within the sales particulars, but may be available by separate negotiation. Whilst every attempt has been made to ensure the accuracy of the floor plan contained here, measurements of doors, windows, rooms and any other items are approximate and no responsibility is taken for any error, omission, or mis-statement. We advise you to book an appointment to view before embarking on any journey to see a property, and check its availability. The accuracy of these details are not guaranteed and they do not form part of the contract.