



VILLAGE ESTATES

• EST.1993 •



93 Main Road, Sidcup, Kent DA14 6ND

Tel: 0208 302 1002

www.village-estates.com

Email: sidcup@village-estates.com



Residents Parking to Rear

**0.4 Mile / Sidcup Mainline
Station**

Waring Park

Chain Free / Vacant

**4 Min Walk to High Street
Station**

Popular Gyms Nearby



6 Kings Court
38 Hatherley Road
Sidcup, DA14 4AT

£240,000

One double bedroom first floor flat that recently been modernised and is ready for immediate occupation. Located in a fantastic position with the high street at the top of the road and Sidcup mainline station at the bottom. The residents in this building have benefited from redecorated communal areas and a new front entrance making for a very pleasant building. Parking is available to the rear just past the communal garden.

EPC RATING:

COUNCIL TAX BAND: C

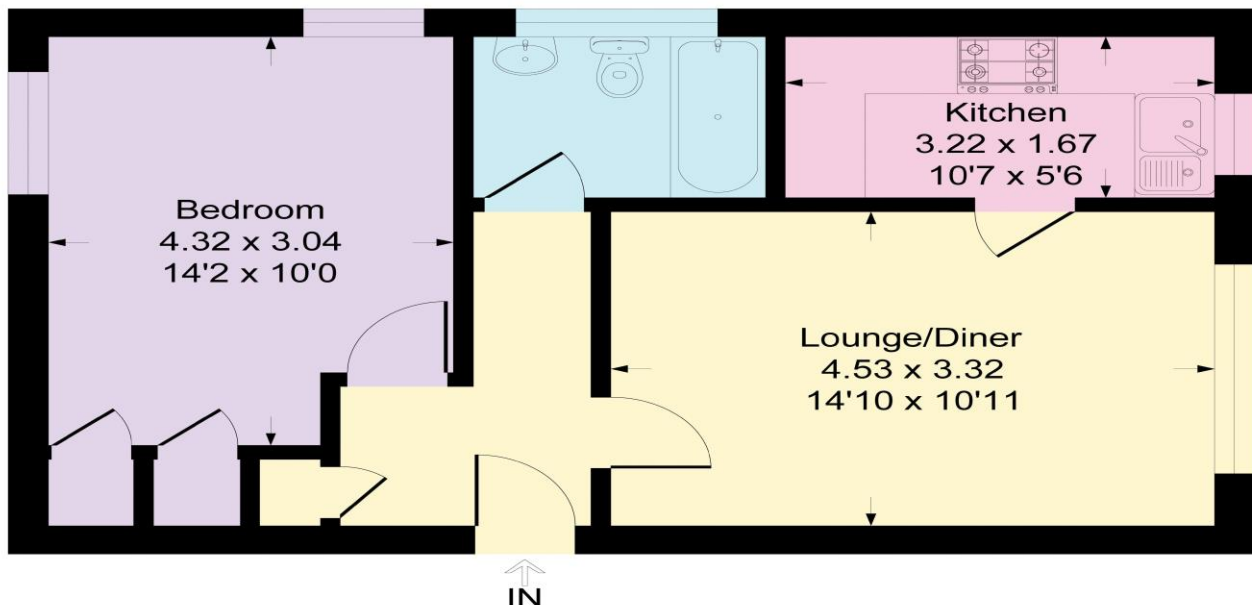
TENURE: Leasehold

LEASE TERM: 99 Years 20th April 2017



Kings Court, Hatherley Road, DA14

Approximate Gross Internal Area = 45.0 sq m / 487 sq ft



CONSUMER PROTECTION FROM UNFAIR TRADING REGULATIONS 2008

Please note that any services, heating system or appliances have not been tested, and no warranty can be given or implied as to their working order. You are advised to obtain verification from your solicitor or surveyor. References to the tenure of a property are based on information supplied by the seller. We have not had sight of the title documents and a buyer is advised to obtain verification from their solicitor. Items shown in photographs are not included unless specifically mentioned within the sales particulars, but may be available by separate negotiation. Whilst every attempt has been made to ensure the accuracy of the floor plan contained here, measurements of doors, windows, rooms and any other items are approximate and no responsibility is taken for any error, omission, or mis-statement. We advise you to book an appointment to view before embarking on any journey to see a property, and check its availability. The accuracy of these details are not guaranteed and they do not form part of the contract.