



VILLAGE ESTATES

• EST.1993 •



93 Main Road, Sidcup, Kent DA14 6ND

Tel: 0208 302 1002

www.village-estates.com

Email: sidcup@village-estates.com



EXTENDED TO SIDE AND REAR
SHORT WALK TO ALBANY PARK STATION
LOWER GROUND FLOOR ACCOMODATION

OFFERED WITH NO CHAIN
TERRACE TO 75ft SOUTH FACING GARDEN
BALCONY TO MASTER BEDROOM



134 Longmead Drive
Sidcup, DA14 4NZ

£700,000

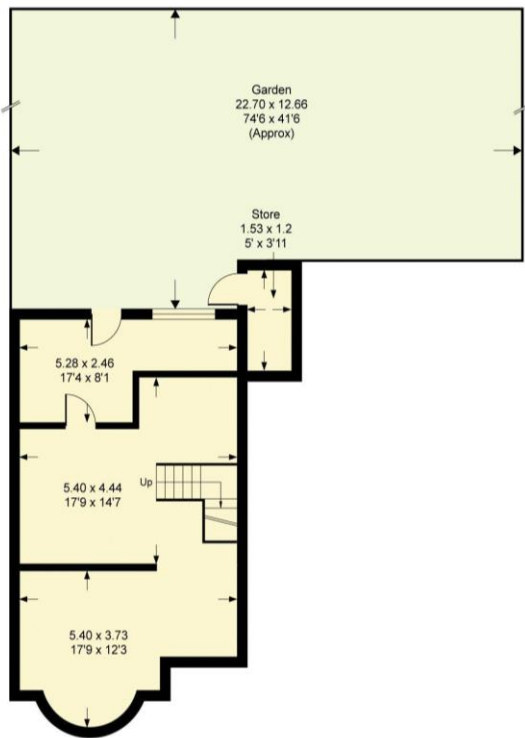
Conveniently located for ALBANY PARK MAINLINE STATION and FOOTSCRAY MEADOWS, Village Estates are pleased to present a FOUR BEDROOM EXTENDED semi-detached house with the addition of FLEXIBLE LOWER GROUND FLOOR ACCOMODATION, OFF STREET PARKING and GARAGE. A fantastic family home with a BALCONY and TERRACE with views over the 75ft SOUTH FACING REAR GARDEN and beyond to FOOTSCRAY MEADOWS

EPC RATING:

TENURE: Freehold

COUNCIL TAX BAND: D

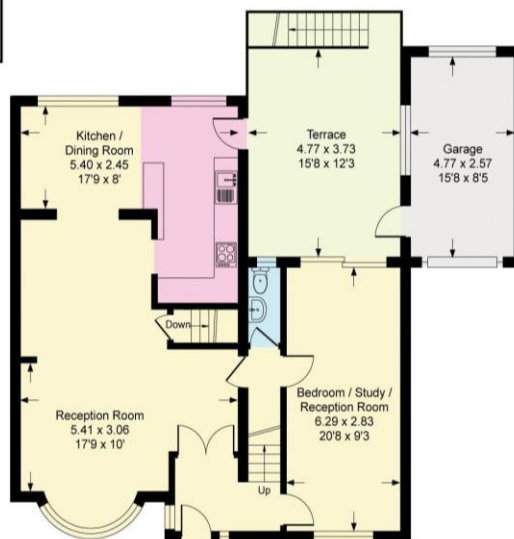
LEASE TERM: Not Applicable



Basement

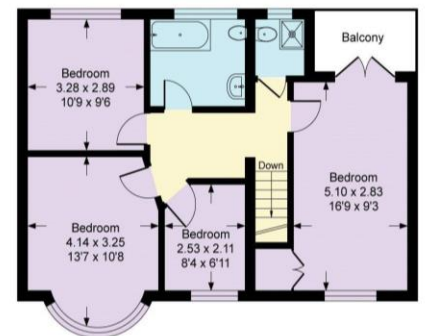
Longmead Drive, DA14

Approximate Gross Internal Area = 185 sq m / 1993 sq ft
 Approximate Garage Internal Area = 12 sq m / 132 sq ft
 Approximate Store Internal Area = 3 sq m / 27 sq ft
 Approximate Total Internal Area = 200 sq m / 2152 sq ft



Ground Floor

IN



First Floor

CONSUMER PROTECTION FROM UNFAIR TRADING REGULATIONS 2008

Please note that any services, heating system or appliances have not been tested, and no warranty can be given or implied as to their working order. You are advised to obtain verification from your solicitor or surveyor. References to the tenure of a property are based on information supplied by the seller. We have not had sight of the title documents and a buyer is advised to obtain verification from their solicitor. Items shown in photographs are not included unless specifically mentioned within the sales particulars, but may be available by separate negotiation. Whilst every attempt has been made to ensure the accuracy of the floor plan contained here, measurements of doors, windows, rooms and any other items are approximate and no responsibility is taken for any error, omission, or mis-statement. We advise you to book an appointment to view before embarking on any journey to see a property, and check its availability. The accuracy of these details are not guaranteed and they do not form part of the contract.