



VILLAGE ESTATES

• EST.1993 •



93 Main Road, Sidcup, Kent DA14 6ND

Tel: 0208 302 1002

www.village-estates.com

Email: sidcup@village-estates.com

Chain Free

First Floor Flat

0.2 Mile I Sidcup High St

Allocated Parking Space

Lease of 96 Years Left Remaining

David Lloyd Leisure Centre



4 Mayfield Court
Sidcup, DA14 6JA

Guide Price £230,000-£240,000

A one bedroom first floor flat within a small building that comes with the benefit of an allocated parking space. Located just a short walk away to Sidcup high street and a number of local bus routes. Offered with no chain and a lease length of 96 years left remaining.

EPC RATING: D

COUNCIL TAX BAND: TBC

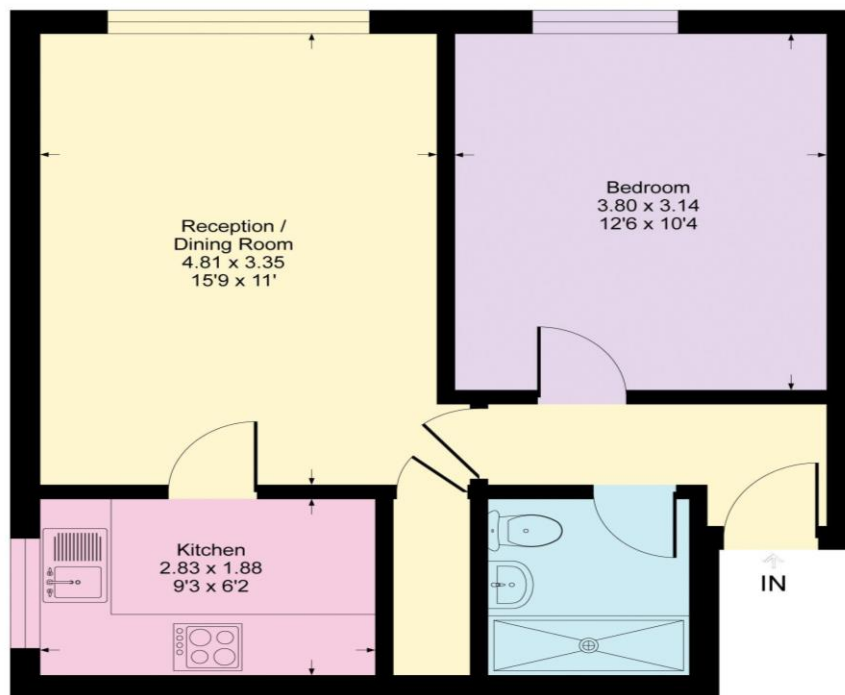
TENURE: Leasehold

LEASE TERM: 96 Years



Mayfield Court, DA14

Approximate Gross Internal Area = 44 sq m / 469 sq ft



First Floor

CONSUMER PROTECTION FROM UNFAIR TRADING REGULATIONS 2008

Please note that any services, heating system or appliances have not been tested, and no warranty can be given or implied as to their working order. You are advised to obtain verification from your solicitor or surveyor. References to the tenure of a property are based on information supplied by the seller. We have not had sight of the title documents and a buyer is advised to obtain verification from their solicitor. Items shown in photographs are not included unless specifically mentioned within the sales particulars, but may be available by separate negotiation. Whilst every attempt has been made to ensure the accuracy of the floor plan contained here, measurements of doors, windows, rooms and any other items are approximate and no responsibility is taken for any error, omission, or mis-statement. We advise you to book an appointment to view before embarking on any journey to see a property, and check its availability. The accuracy of these details are not guaranteed and they do not form part of the contract.