



1 Millwood Farm Barns
Long Hanborough, Oxfordshire OX29 8RB

1 Millwood Farm Barns, Long Hanborough, Oxfordshire OX29 8RB

A 3 bedroom barn conversion, part of a small Grade 2 listed development of 6 properties, set in attractive location within this sought after village. The property has spacious accommodation to include a large reception hall, living room, kitchen/dining room, and a utility room, together with 3 bedrooms, a bathroom, double glazing and gas central heating. There is a front garden, driveway parking, and an enclosed rear garden with a sunny aspect. Available for sale with no onward chain.

Additional information to note:

- Ofcom Checker indicates that Standard and Superfast broadband is available at the property.
- According to Ofcom voice and data indoors is limited with EE, not available with Three, limited with O2 and limited with Vodafone. Outdoor both voice and data are likely with all networks.

Directions

Leave Witney via Woodstock Road and turn left at the 'T' junction in the direction of North Leigh. Pass the villages of North Leigh and Freeland proceed on to Long Hanborough. On entering Long Hanborough proceed along, taking the second turning on the left into Millwood End. Take the second left into Millwood End (again) and continue along, and Millwood Farm Barns are found on the left hand side, on the corner of Abelwood Road.

Draft details - may be subject to alterations. 15D25





GROUND FLOOR

Large Entrance Reception Hall

Living Room

Kitchen/Dining Room

Utility Room

FIRST FLOOR

3 Bedrooms

Bathroom

Double Glazing

Gas Central Heating

OUTSIDE

Front Lawned Area

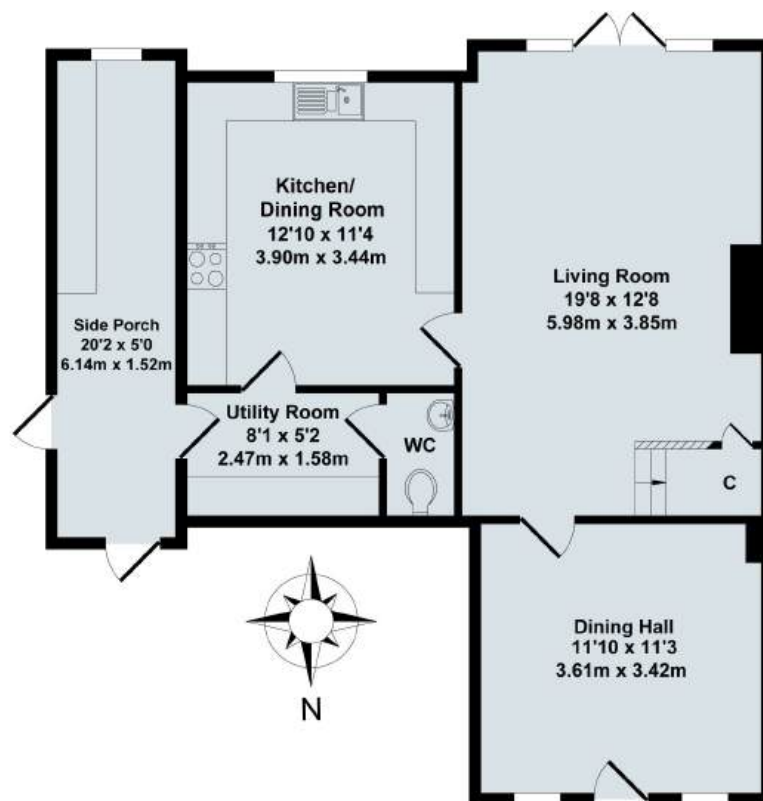
Driveway Parking

Rear Garden

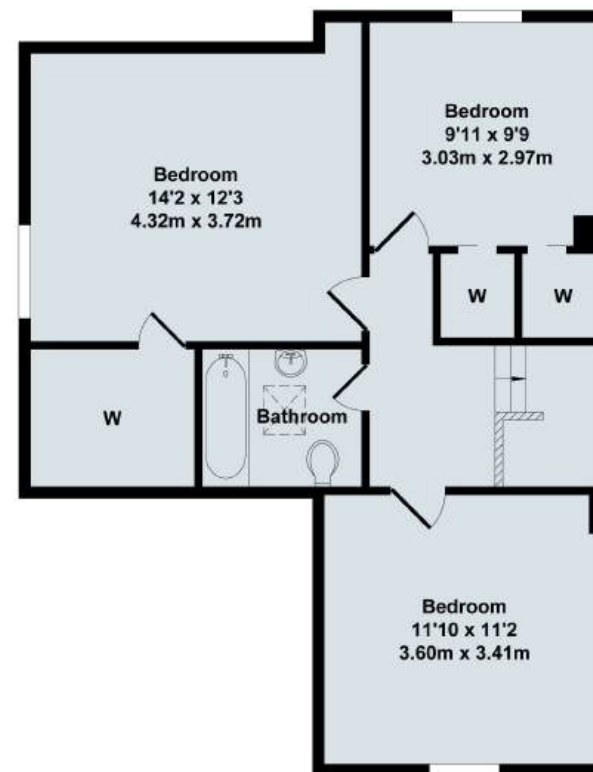
All Mains Services are Connected

Price £550,000 Freehold
Council Band E / EPC Rating: N/A





Ground Floor



First Floor

1 Millwood Farm Barns

Total Approx. Floor Area 1307 Sq.Ft. (121.40 Sq.M.)

All items illustrated on this plan are included in the "Total Approx Floor Area"

Contact:

52 Market Square, Witney, Oxfordshire, OX28 6AF

Tel: 01993 772000 Email: witney@thomasmerrifield.co.uk

Importance Notice

Thomas Merrifield and their clients give notice that:

1. They are not authorised to make or give any representations or warranties in relation to the property either here or elsewhere, either on their own behalf or on behalf of their client or otherwise. They assume no responsibility for any statement that may be made in these particulars. These particulars do not form part of any offer or contract and must not be relied upon as statements or representations of fact.

2. Any areas, measurements or distances are approximate. The text, photographs and plans are for guidance only and are not necessarily comprehensive. It should not be assumed that the property has all necessary planning, building regulation or other consents and Thomas Merrifield have not tested any services, equipment or facilities. Purchasers must satisfy themselves by inspection or otherwise.