



READINGS

www.readingspropertygroup.com



St. James Close

Huncote, Leicester, LE9 3BE

£240,000



3



1



4



F

St. James Close

Huncote, Leicester, LE9 3BE

This semi-detached house is definitely a project – it needs a full renovation – but that makes it an exciting opportunity for anyone searching for their next challenge.

Tucked away to one end of this close, the property comes with a generous rear garden, driveway, front garden and a sectional garage to the side. Inside, you'll find an entrance hall, lounge, dining kitchen, conservatory, three bedrooms and a bathroom upstairs. With plenty of potential to add value and create a fantastic family home, this property is just waiting for someone with vision to bring it back to life. And with no onward chain, you could get started straight away.

Property Information

Tenure: Freehold

Local Authority: Blaby

Council Tax Band: B

Type of Construction: Standard

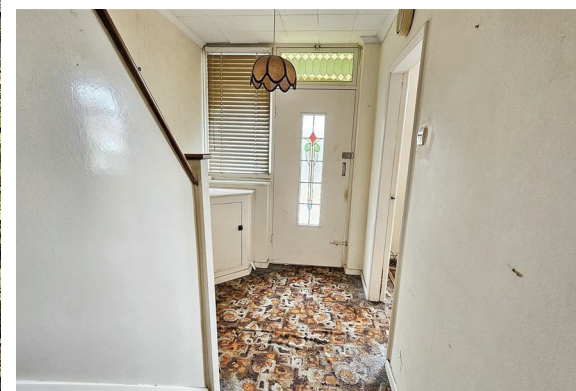
Services: The property is offered to the market with all mains services.

Multiple Options for Broadband/mobile phone signal.

Flood Risk: None

Annual Estate Management Charge If Applicable: n/a

The property is being with Vacant Possession upon completion. **FIXTURES AND FITTINGS** - All the items mentioned in these sales details are to be included within the purchase price. **SERVICES** - None of the services, fitting or appliances (if any) heating installations, plumbing or electrical systems have been tested by the selling agents, neither have the telephone or television points.





Anti Money Laundering

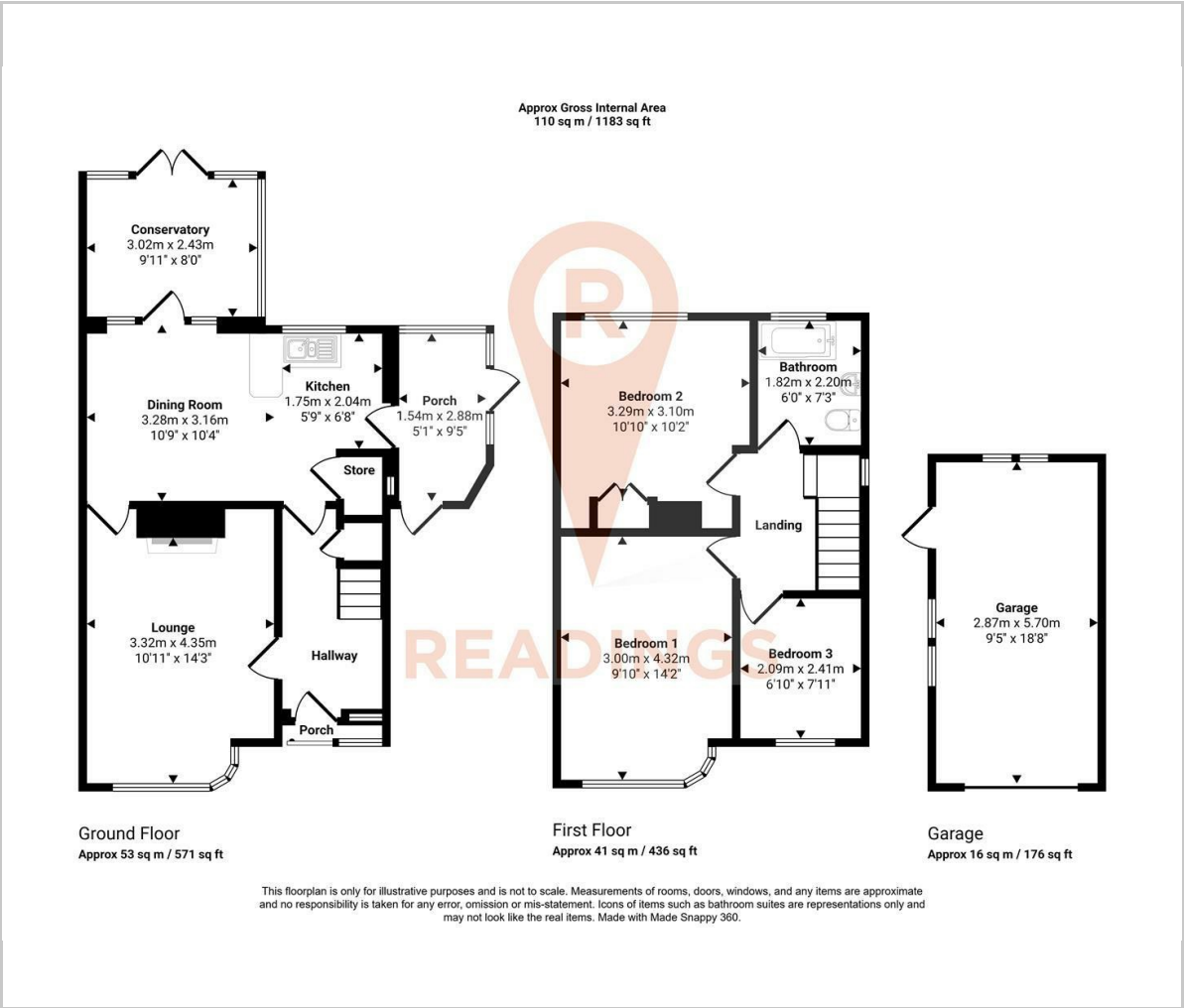
By law, we are required to carry out Anti-Money Laundering checks for all buyers and sellers. Once you instruct us to market your property, or once your offer has been accepted, a fee of £18 (including VAT) per person is payable to complete these checks. For sellers, this fee must be paid before we can publish your property for sale, and for buyers, it's required before we can issue the memorandum of sale.

The fee is non-refundable and is paid directly to Landmark Information Group. We receive a portion of this fee for facilitating the verification process.

Consumer Protection Legislation

These sales details have been written to conform to Consumer Protection Legislation. Whilst we endeavour to make our sales details accurate and reliable, if there is any point of particular importance to you, please contact the office and we will check the information for you, particularly if contemplating travelling some distance to view. Measurements are given in good faith and whilst believed to be accurate these should be checked by the purchaser for verification. The measurements are carried out in accordance with the RICS and ISVA code of measuring practice.

Floor Plan



Viewing

Please contact our Readings Sales Office on 0116 2227575 if you wish to arrange a viewing appointment for this property or require further information.

Area Map



Energy Efficiency Graph

