



1 White Horse Close, Felixstowe, Suffolk, IP11 9UJ

£325,000 FREEHOLD

**DIAMOND
MILLS**
Established 1908

Situated in a quiet cul-de-sac of Old Felixstowe, a well appointed two bedroom detached bungalow with a garage and south facing rear garden.

ENTRANCE HALL

BEDROOM 1

11' 1" x 9' 2" (3.38m x 2.79m)

BEDROOM 2

9' 2" x 8' 1" (2.79m x 2.46m)

STORE CUPBOARD (POTENTIAL TO BE ENSUITE)

LOUNGE

15' 10" x 11' 9" (4.83m x 3.58m)

BATHROOM

KITCHEN

10' 8" x 7' 5" (3.25m x 2.26m)

GARAGE

16' 9" x 8' 4" (5.11m x 2.54m)

COUNCIL TAX BAND

Band C.

ENERGY PERFORMANCE CERTIFICATE

The current energy performance rating is C (71) with a potential rating of B (88) and the current energy performance certificate is valid until 4th May 2035.

AGENTS NOTE

DIAMOND MILLS & CO. have not tested any electrical systems, appliances, plumbing or heating systems and cannot testify that they are in working condition.

VACANT POSSESSION ON COMPLETION

VIEWING

By prior appointment with the vendors agents -
DIAMOND MILLS & CO. (01394) 282281.

**DIAMOND
MILLS**
Established 1908



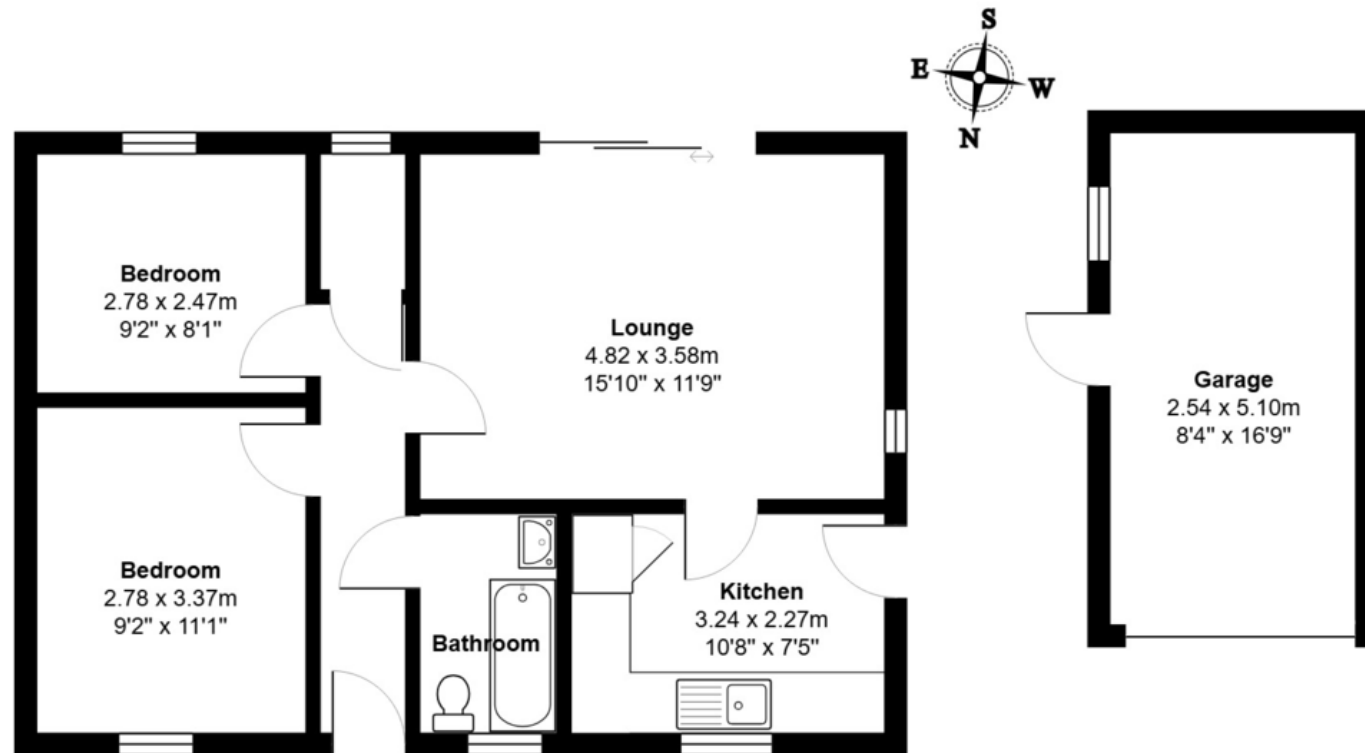


117 Hamilton Road, Felixstowe, Suffolk IP11 7BL Tel: (01394) 282281



www.diamondmills.co.uk E-mail: sales@diamondmills.co.uk





Total Area: 65.7 m² ... 708 ft²