



# CHOICE PROPERTIES

*Estate Agents*

8 Bradley Close,  
Mablethorpe, LN12 1FD

Reduced To £174,950



**5% MORTGAGE DEPOSIT PAID BY DEVELOPER- CALL NOW TO FIND OUT MORE!** Choice Properties are delighted to offer for sale this three bedroom (one en suite) semi detached new build house completed to a high specification and to include £2,000 of flooring to be fitted by the seller. This superb property is located in a prime position close to local amenities and only a short distance from award winning beaches.

The property has the benefit of Gas central heating and UPVC double glazing. Internally the well laid out accommodation consists of:

### **Hallway**

Front composite door leading into hallway, which features stairs to the first floor and doors leading to:

### **Reception Room**

10'7" x 15'6"

Light and airy reception room, benefiting from double opening 'French' doors out into the Garden and an open play style with the:

### **Dining Area**

8'2" x 8'2"

Providing ample space for a dining table and an opening through to the:

### **Kitchen**

10'3" x 8'2"

Fitted with a range of wall and base units with worktop over, one bowl stainless steel sink with drainer and mixer tap, four ring induction hob with a stainless steel extractor hood over, integral electric oven, inset spot lighting, part tiling to the walls, spaces for freestanding and under-counter appliances and the kitchen also houses the wall mounted gas combination boiler; supplying both the central heating and hot water systems.

### **WC**

7'2" x 3'2"

Fitted with a WC with dual flush button and a pedestal hand wash basin with mixer tap, tiled flooring and tiled splashback.

### **Landing**

With loft access and doors leading to:

### **Bedroom 1**

12'5" x 11'1"

Spacious double bedroom with a door to the en-suite shower room.

### **En-suite shower room**

Fitted with a three piece suite comprising a tiled shower cubicle with a mains fed shower over, pedestal hand wash basin with mixer tap and WC with dual flush button, tiled flooring.

### **Bedroom 2**

12'4" x 8'6"

Double bedroom.

### **Bedroom 3**

8'4" x 6'8"

### **Bathroom**

6'4" x 8'2"

Fitted with a three piece suite comprising a panelled bath tub with single hot and cold taps, pedestal hand wash basin with mixer tap and WC with dual flush button, tiled splashbacks.

**Garden**

To the rear of the property you will find a privately enclosed garden laid to lawn with timber fencing to the boundaries. The rear garden additionally benefits from a paved patio area.

**Tenure**

Freehold.

**Viewing arrangements**

By appointment through Choice Properties on 01507 472016.

**Opening hours**

Monday to Friday 9.00am to 5.00pm

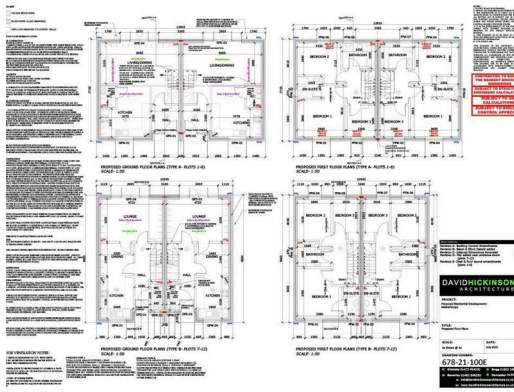
Saturday 9.00am - 3.00pm

**Council Tax Band**

To be confirmed.

Choice Properties have not tested any included apparatus, equipment, fixtures, fittings, central heating systems or services mentioned in these particulars and purchasers are advised to satisfy themselves as to their working order and condition. Buyers are strongly advised to obtain verification from their Solicitor or Surveyor regarding the working order and condition of all the items included. These particulars do not constitute, nor constitute any part of, an offer or contract. All statements contained in these particulars as to this property are made without responsibility on the part of Choice Properties or the vendors or lessors. None of the statements contained in these particulars as to this property are to be relied on as statements or representations of fact. All measurements have been taken as a guide to prospective buyers only, and are approximate. Any intending purchasers must satisfy themselves by inspection or otherwise as to the correctness of each of the statements contained in these particulars. The vendors do not make or give and neither Choice Properties nor any person in their employment has any authority to make or give any representation or warranty whatever in relation to this property.





NO.	DESCRIPTION
1	GENERAL NOTES
2	WORKMANSHIP
3	CONCRETE
4	PLASTER
5	PAINT
6	ROOFING
7	GLAZING
8	MECHANICAL & ELECTRICAL
9	HEATING
10	VENTILATION
11	WATER SUPPLY
12	SEWERAGE
13	LANDSCAPE
14	FINISHES
15	ACCESSORIES
16	FIXTURES & FITTINGS
17	WORKMANSHIP
18	CONCRETE
19	PLASTER
20	PAINT
21	ROOFING
22	GLAZING
23	MECHANICAL & ELECTRICAL
24	HEATING
25	VENTILATION
26	WATER SUPPLY
27	SEWERAGE
28	LANDSCAPE
29	FINISHES
30	ACCESSORIES
31	FIXTURES & FITTINGS
32	WORKMANSHIP
33	CONCRETE
34	PLASTER
35	PAINT
36	ROOFING
37	GLAZING
38	MECHANICAL & ELECTRICAL
39	HEATING
40	VENTILATION
41	WATER SUPPLY
42	SEWERAGE
43	LANDSCAPE
44	FINISHES
45	ACCESSORIES
46	FIXTURES & FITTINGS
47	WORKMANSHIP
48	CONCRETE
49	PLASTER
50	PAINT
51	ROOFING
52	GLAZING
53	MECHANICAL & ELECTRICAL
54	HEATING
55	VENTILATION
56	WATER SUPPLY
57	SEWERAGE
58	LANDSCAPE
59	FINISHES
60	ACCESSORIES
61	FIXTURES & FITTINGS
62	WORKMANSHIP
63	CONCRETE
64	PLASTER
65	PAINT
66	ROOFING
67	GLAZING
68	MECHANICAL & ELECTRICAL
69	HEATING
70	VENTILATION
71	WATER SUPPLY
72	SEWERAGE
73	LANDSCAPE
74	FINISHES
75	ACCESSORIES
76	FIXTURES & FITTINGS
77	WORKMANSHIP
78	CONCRETE
79	PLASTER
80	PAINT
81	ROOFING
82	GLAZING
83	MECHANICAL & ELECTRICAL
84	HEATING
85	VENTILATION
86	WATER SUPPLY
87	SEWERAGE
88	LANDSCAPE
89	FINISHES
90	ACCESSORIES
91	FIXTURES & FITTINGS
92	WORKMANSHIP
93	CONCRETE
94	PLASTER
95	PAINT
96	ROOFING
97	GLAZING
98	MECHANICAL & ELECTRICAL
99	HEATING
100	VENTILATION

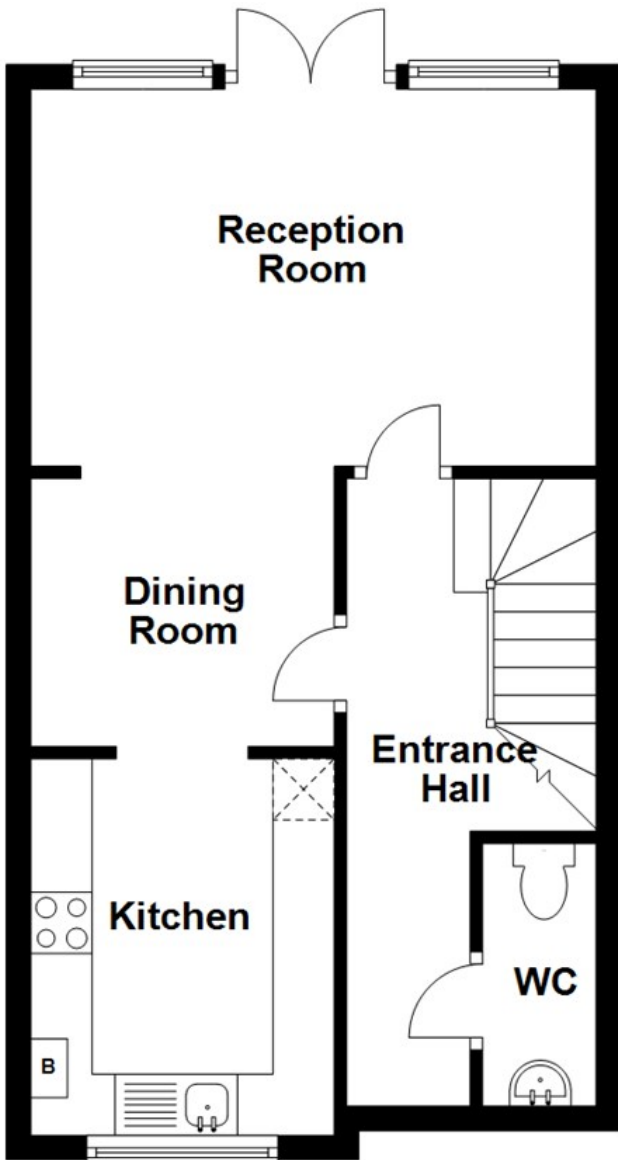
**DAVID HICKSON**  
ARCHITECTS

078-21-1006



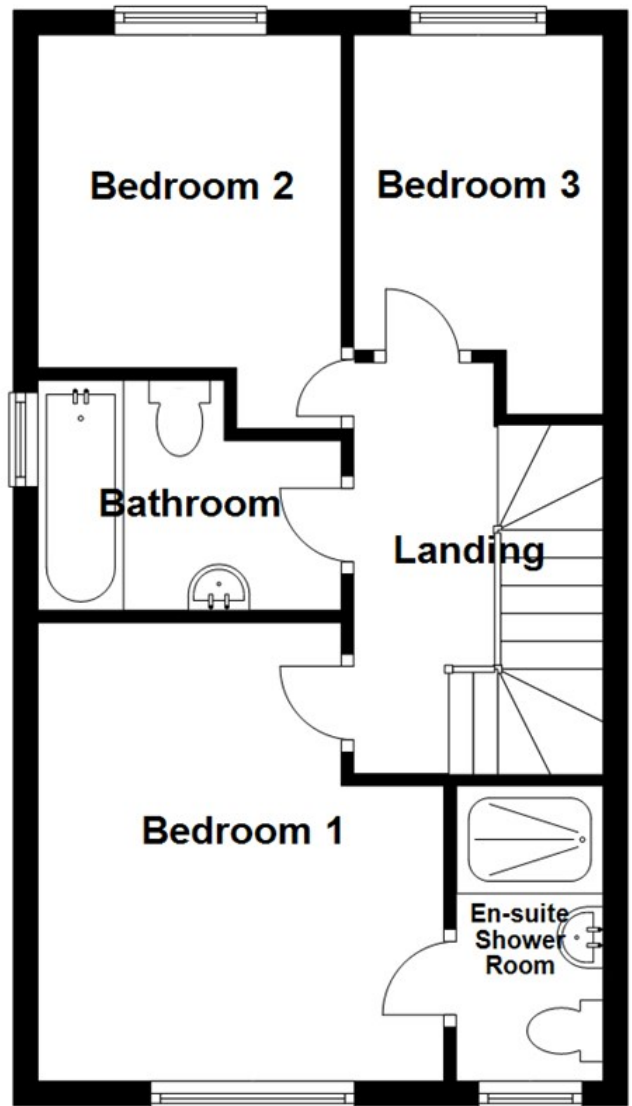
## Ground Floor

Approx. 38.9 sq. metres (419.0 sq. feet)



## First Floor

Approx. 39.4 sq. metres (424.5 sq. feet)



Total area: approx. 78.4 sq. metres (843.5 sq. feet)

# Directions

From our office head north along Victoria Road to the traffic lights. At the traffic lights turn left onto the High Street. Follow the High Street along onto Alford Road and turn right onto Tuplin Road, Centenary Close can be found a short way along on your right hand side. Turn down Centenary Close and the development can be found adjacent to number 22.

Energy Efficiency Rating		Current	Potential
Very energy efficient - lower running costs			
(92 plus) A			
(81-91) B			
(69-80) C			
(55-60) D			
(39-54) E			
(21-38) F			
(1-20) G			
Not energy efficient - higher running costs			
England & Wales		EU Directive 2002/91/EC	

Environmental Impact (CO <sub>2</sub> ) Rating		Current	Potential
Very environmentally friendly - lower CO <sub>2</sub> emissions			
(92 plus) A			
(81-91) B			
(69-80) C			
(55-60) D			
(39-54) E			
(21-38) F			
(1-20) G			
Not environmentally friendly - higher CO <sub>2</sub> emissions			
England & Wales		EU Directive 2002/91/EC	

