



75a Landswood Park

Hartford, Northwich

- Detached Family Home
- Prime Hartford Location
- Four Double Bedrooms
- Garage & Driveway
- Secluded Rear Garden

This impressive four bedroom detached family home is situated in the highly sought-after area of Hartford. Offering spacious and versatile accommodation throughout, the property is ideal for growing families or those seeking additional space for home working or entertaining.

The welcoming entrance hall features an elegant oak staircase and oak doors, setting a tone of quality and style that continues throughout the home.

The ground floor comprises a generous living room, a separate dining area, and a well-proportioned kitchen (with potential for modernisation to suit your tastes). There is also a convenient downstairs office/boot room and WC.

Upstairs, you will find four double bedrooms, the master benefitting from an en-suite, and each offering ample space for furnishings and storage, as well as a family bathroom.

The property includes a garage, driveway, and a good sized front lawn with well established flower beds, providing valuable off-road parking, storage solutions. To the rear the South Westerly facing secluded garden offers a great space for dining, entertaining and relaxing.

With its prime location in Hartford, this home is close to excellent schools, local amenities, and transport links.

While already a comfortable and well-presented residence, there is significant potential for further improvements, allowing you to create the perfect family home tailored to your own requirements and



75a Landswood Park

Hartford, Northwich

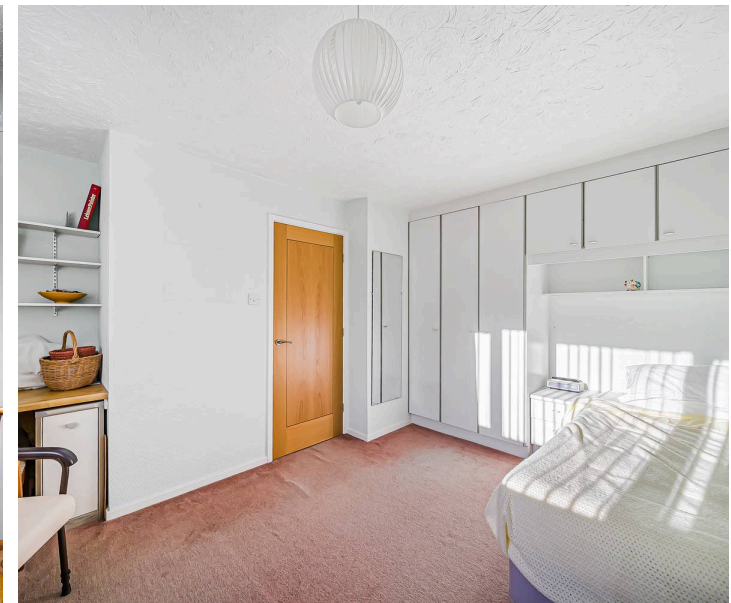
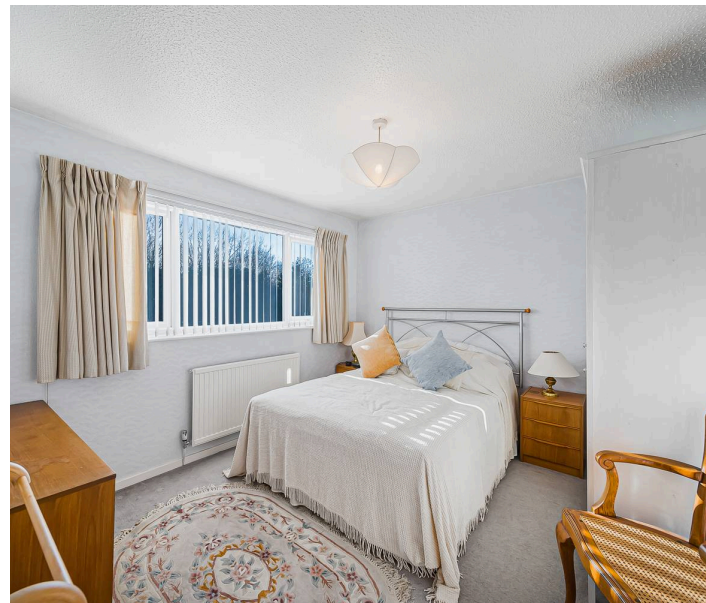
Council Tax band: E

Tenure: Freehold

EPC Energy Efficiency Rating:

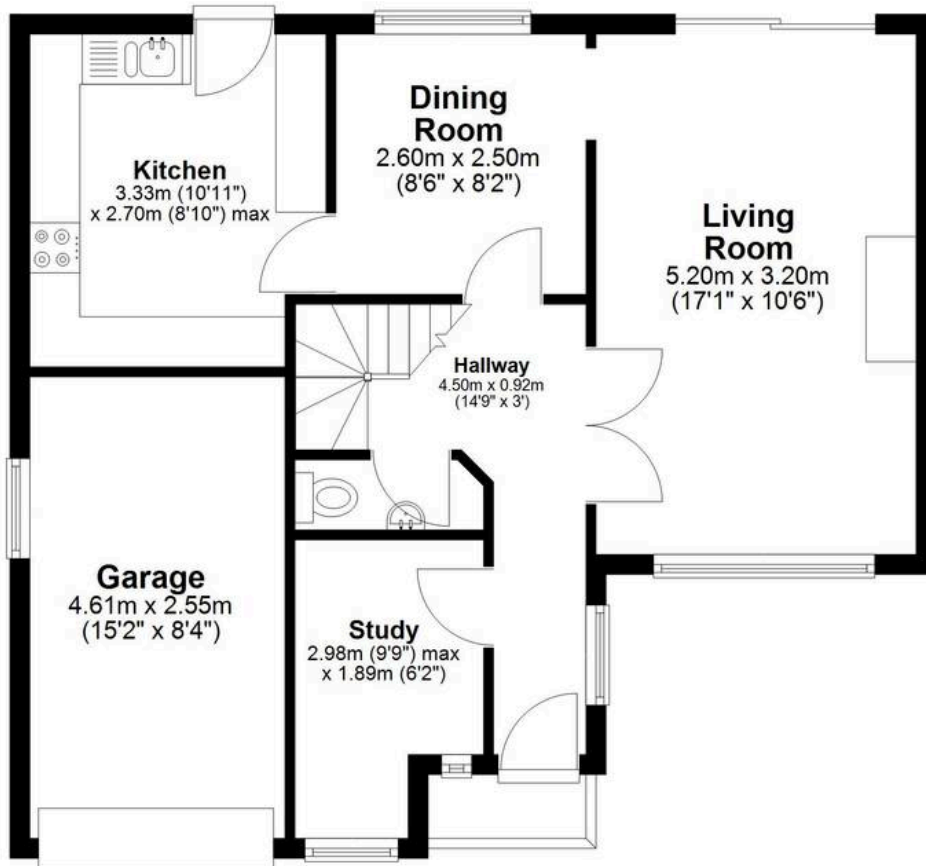
EPC Environmental Impact Rating:

- Detached Family Home
- Prime Hartford Location
- Four Double Bedrooms
- Garage & Driveway
- Secluded Rear Garden



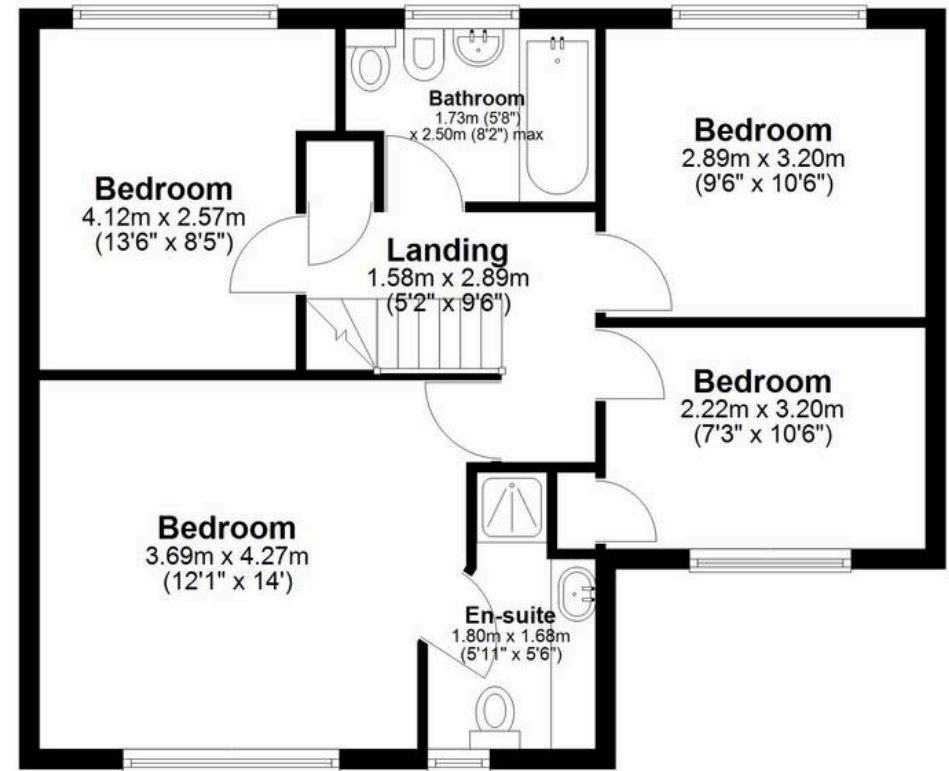
Ground Floor

Approx. 59.5 sq. metres (640.4 sq. feet)



First Floor

Approx. 55.0 sq. metres (592.1 sq. feet)



Total area: approx. 114.5 sq. metres (1232.5 sq. feet)



Williams Estates

33 The Green, Hartford - CW8 1QA

01606 331784

info@westates.co.uk

www.westates.co.uk/#/



These particulars, whilst believed to be accurate are set out as a general outline only for guidance and do not constitute any part of an offer or contract. Intending purchasers should not rely on them as statements of representation of fact, but must satisfy themselves by inspection or otherwise as to their accuracy. All measurements quoted are approximate. We are unable to confirm the working order of any fixtures and fittings including appliances that are included in these particulars. No person in this firm's employment has the authority to make or give any representation or warranty in respect of the property. Williams Estates is the trading name of Williams Estates (Ltd). Registered address 33, The Green, Hartford, Northwich, Cheshire, CW8 1QA. Reg number 07682683. Director Andrew P Williams