



15 Mulberry Rise

Northwich, Northwich

- First Floor Apartment
- Living Room
- Kitchen
- Double Bedroom
- Bathroom
- Two Parking Spaces

A one bedroom first floor apartment, located on the popular Moss Farm development and within only a short walk to Greenbank Railway Station. The property has its own private entrance door fronting out on to Sydney Street and a small wooden terrace, with space for a small table and chair. Inside the property there is a small entrance hall, which opens into the living room and the kitchen is located off the living room to the rear. There is an inner hall with storage cupboard, a double bedroom with a built-in double wardrobe and there is a bathroom with a three piece suite with a shower over the bath. Outside there are communal gardens and to the front there is private parking for two cars.



15 Mulberry Rise

Northwich, Northwich

The property is located in a popular residential area with local shops and other facilities available on either Chester Road, Castle or Winnington Lane. Winnington Park Community Primary School (Ofsted Good) serves the area and there are two local high schools located in Hartford and Weaverham. Two railway stations serve the area with the West Coast Main Line service running through Hartford, enabling access to London within two hours. Trains to Manchester and Chester run from Greenbank and Northwich stations. The A556 and A49 easily facilitate access to the region's major road network with Manchester and Liverpool airports both within 20 miles. Nearby Northwich caters for a more comprehensive range of amenities, including leading supermarkets with Waitrose, Sainsbury's and Tesco all represented

Council Tax band: A

Tenure: Leasehold

EPC Energy Efficiency Rating: C

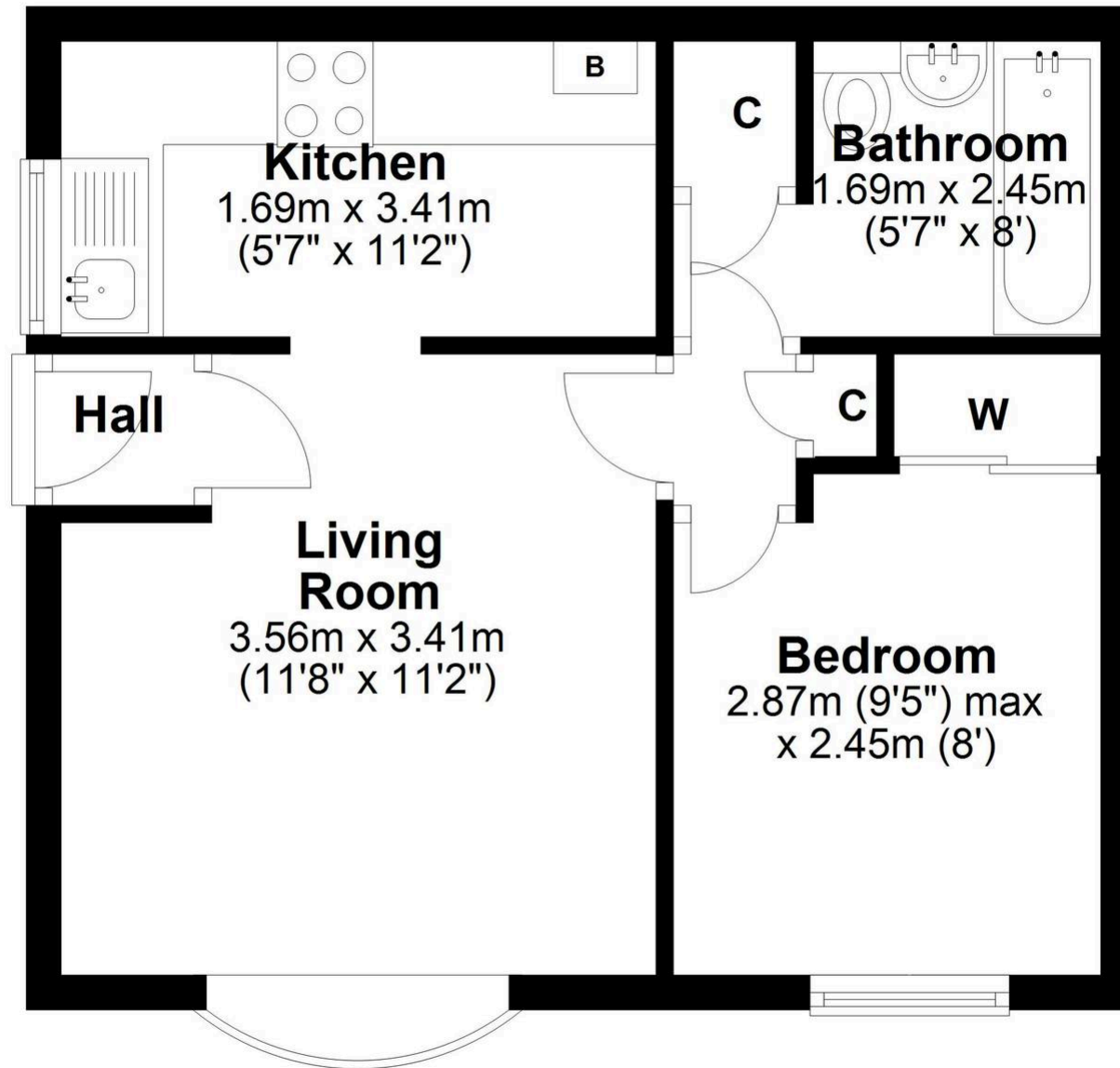
EPC Environmental Impact Rating: C

- First Floor Apartment
- Living Room
- Kitchen
- Double Bedroom
- Bathroom
- Two Parking Spaces



First Floor

Approx. 32.1 sq. metres (345.6 sq. feet)



Total area: approx. 32.1 sq. metres (345.6 sq. feet)



Williams Estates

33 The Green, Hartford - CW8 1QA

01606 331784

info@westates.co.uk

www.westates.co.uk/#/



These particulars, whilst believed to be accurate are set out as a general outline only for guidance and do not constitute any part of an offer or contract. Intending purchasers should not rely on them as statements of representation of fact, but must satisfy themselves by inspection or otherwise as to their accuracy. All measurements quoted are approximate. We are unable to confirm the working order of any fixtures and fittings including appliances that are included in these particulars. No person in this firm's employment has the authority to make or give any representation or warranty in respect of the property. Williams Estates is the trading name of Williams Estates (Ltd). Registered address 33, The Green, Hartford, Northwich, Cheshire, CW8 1QA. Reg number 07682683. Director Andrew P Williams