



Turnstone Close, Rugby, Warwickshire
Asking Price £500,000



Turnstone Close, Rugby, Warwickshire

Crowhurst Gale are pleased to offer this beautiful four bedroom home located in the popular residential location of Coton Meadows. Having been extended this property now offers lots of natural light and open plan living accommodation. The ground floor consists of an entrance hall, large sitting room, w/c, fully fitted kitchen, extended and open plan living/kitchen/dining room, utility and converted cinema room. On the first floor, you will find three double bedrooms, a family bathroom as well as a principal bedroom with en-suite. This property has been finished to a very high standard and some of the features include Bi-fold doors in the open plan area along with under-floor heating, gas boiler installed Feb 2018, integrated dishwasher and fridge freezer in the kitchen. Some of the upstairs features include fitted wardrobes in three bedrooms and the En-suite has had a power shower fitted and the loft has been fully boarded to offer a great storage space. Outside there is a well-maintained garden along with ample parking. Located 1.6 miles to the Train station and 2 miles from Rugby town centre. The property is also within the catchment for the popular Rugby free school. Viewing is highly recommended to see this beautifully presented property.

Entrance Hall

Doors leading to:

Lounge 17'9" x 12'10" (5.43 x 3.92)

Guest WC

Open Plan Living/Kitchen/Dining Room 23'5" x 19'4" (7.16 x 5.91)

Utility Room 8'11" x 5'0" (2.74 x 1.54)

Cinema Room 10'4" x 8'7" (3.16 x 2.62)

Principal Bedroom 13'8" x 11'1" (4.19 x 3.40)

En-Suite 6'5" x 6'0" (1.96 x 1.84)

Bedroom Two 11'10" x 9'8" (3.63 x 2.97)



Bedroom Three 10'6" x 9'0" (3.21 x 2.75)

Bedroom Four 11'0" x 10'7" (3.37 x 3.25)

Bathroom 7'2" x 6'4" (2.19 x 1.94)

Rear Garden

Secluded, landscaped rear garden with seating and dining areas.

Market Appraisal

If you are considering selling your property, we would be delighted to give you a free no obligation market appraisal. Our experience, knowledge and marketing with local and internet advertising will get your property seen and stand out from the crowd. Please contact us to arrange your property appraisal.

Conveyancing Services

Our solicitors work on a no sale, no fee basis. They work longer hours than the conventional solicitor and are available weekends. Please contact us for more information on our conveyancing services.

Mortgage Services

Crowhurst Gale can offer Panda Mortgage Services for professional mortgage advice and will help to find the right product that will suit your budget and needs from virtually the whole of the mortgage market.

Tax Band

Tax Band: E

Tenure

Freehold

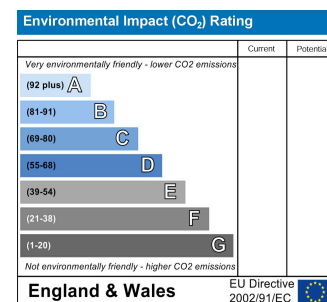
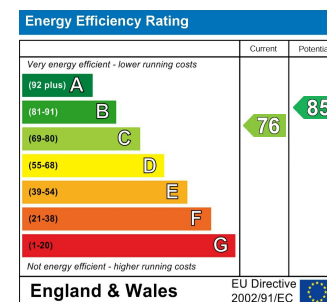
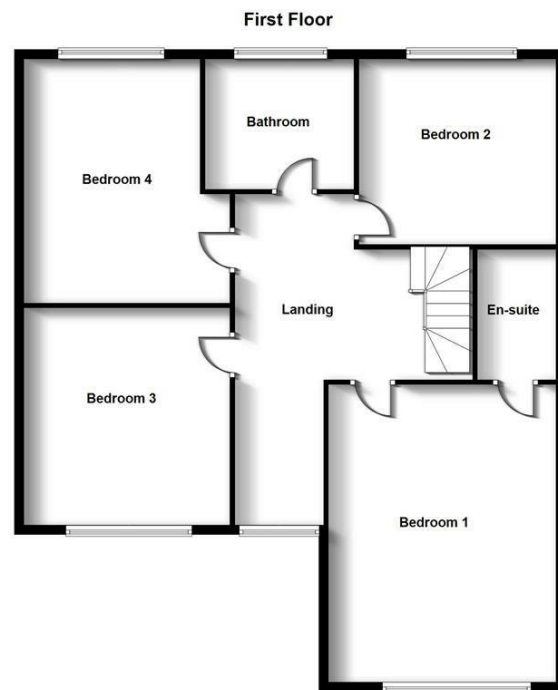
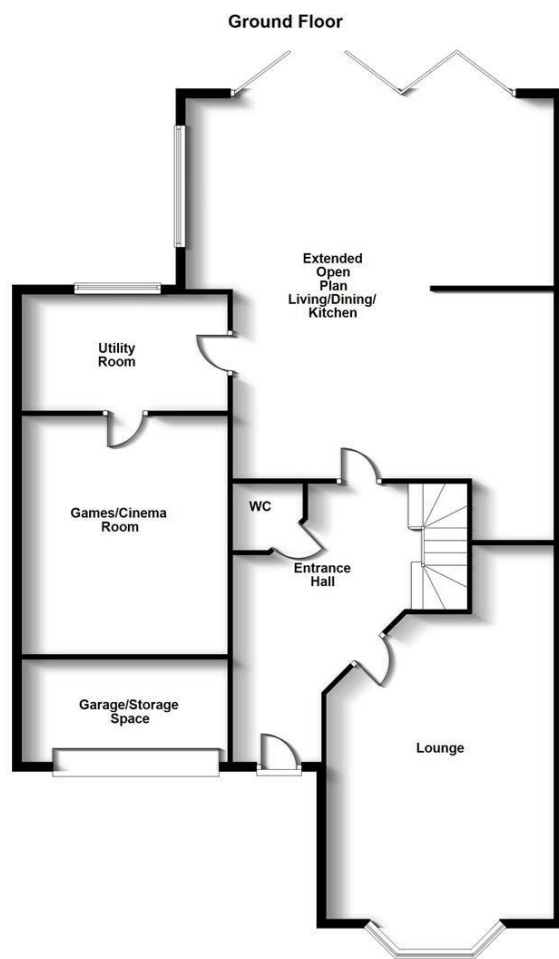
Local Authority

Rugby Borough Council

Viewing

By appointment only through Crowhurst Gale Estate Agents
01788 522266





31 The Green, Bilton, Rugby, Warwickshire, CV22 7LZ
 Tel: 01788 522 266
 property@crowhurst-gale.co.uk
 www.crowhurst-gale.co.uk

