

# *Can Citrus*

SAN LORENZO, IBIZA



by **MARLOW**









Stone-framed morning light  
*Lavender and citrus hum*  
Where the island breathes



Tucked away on a peaceful road between Santa Gertrudis and San Lorenzo, Can Citrus is a home that lives lightly on the land and leaves a lasting impression.

Set on a beautifully landscaped 25,000 sq. m plot with citrus trees, olive groves, fig, lavender, and sun-drenched lawns, this Blakstad-designed home offers space, serenity, and a seamless connection to the outdoors.

Step into Can Citrus and you're welcomed with arched doors, high ceilings, and views that stretch over pine forest and open fields. From the warmth of its materials to the light that moves through every room, this is a place where life flows naturally.







Can Citrus  
€8,850,000





5 bedrooms



560 sqm



4 bathrooms



25,000 sqm





*"Can Citrus is one of the most beautiful listings I've walked into. It is the kind of place that gives you a feeling the second you arrive. Between the gardens, the light, and the layout, it is perfect for someone who wants both privacy and beauty in a central Ibiza location."*

Tim Stacey, Ibiza Sales Manager



# The *Interior*

Step through the double-arched doorway and into a calm, light-filled reception space. A skylight above draws your gaze up, while to the right, the open-plan kitchen acts as the natural gathering place. The central island is large and beautifully designed, and doors on either side open onto a shaded terrace with an outdoor dining area. To the left, a hallway leads to a peaceful courtyard and the bedroom wing. On this level, you'll find four bedrooms, including one with a king-size bed and a bathroom with a freestanding tub. There is also a dedicated cinema room with inbuilt seating and surround sound.

Upstairs, the primary suite offers privacy and soft views over the trees, with two additional guest bedrooms sharing a family bathroom. Throughout the home, traditional materials like wooden beams, plastered walls, and arched windows create a feeling of warmth and ease.



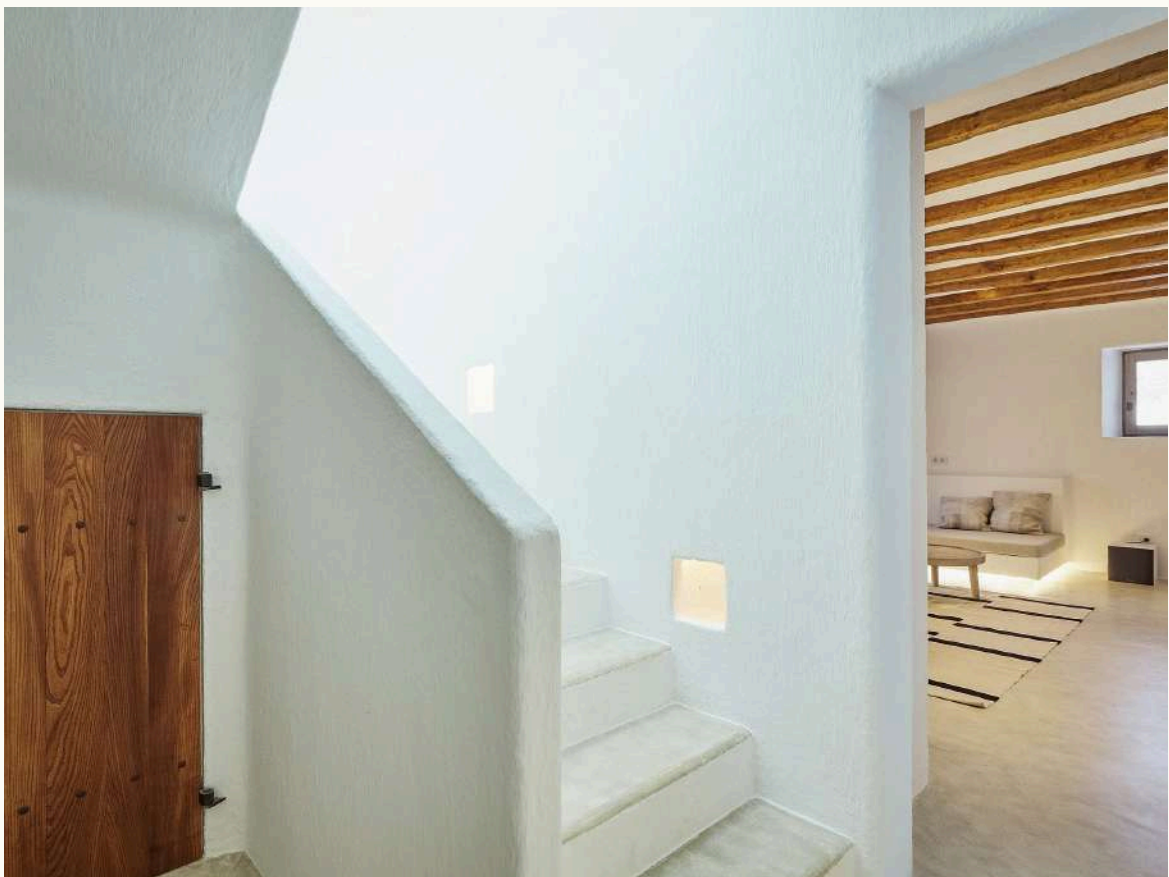




























































A place to find  
*light*





MAR  
LOW



# The *Exterior*

The approach to Can Citrus sets the tone. A long private driveway weaves through the pines and opens into peaceful, landscaped gardens and soft green space. The gardens unfold naturally around the home, from the citrus and fig trees to the wide stretch of olive grove.

At the heart of the land is a 20m infinity pool positioned to make the most of the light and views. Around it, terraces and shaded seating areas invite you to pause, gather, and stay a little longer. The layout feels expansive but never excessive. It is a place to exhale.







A place to find  
*tranquility*



















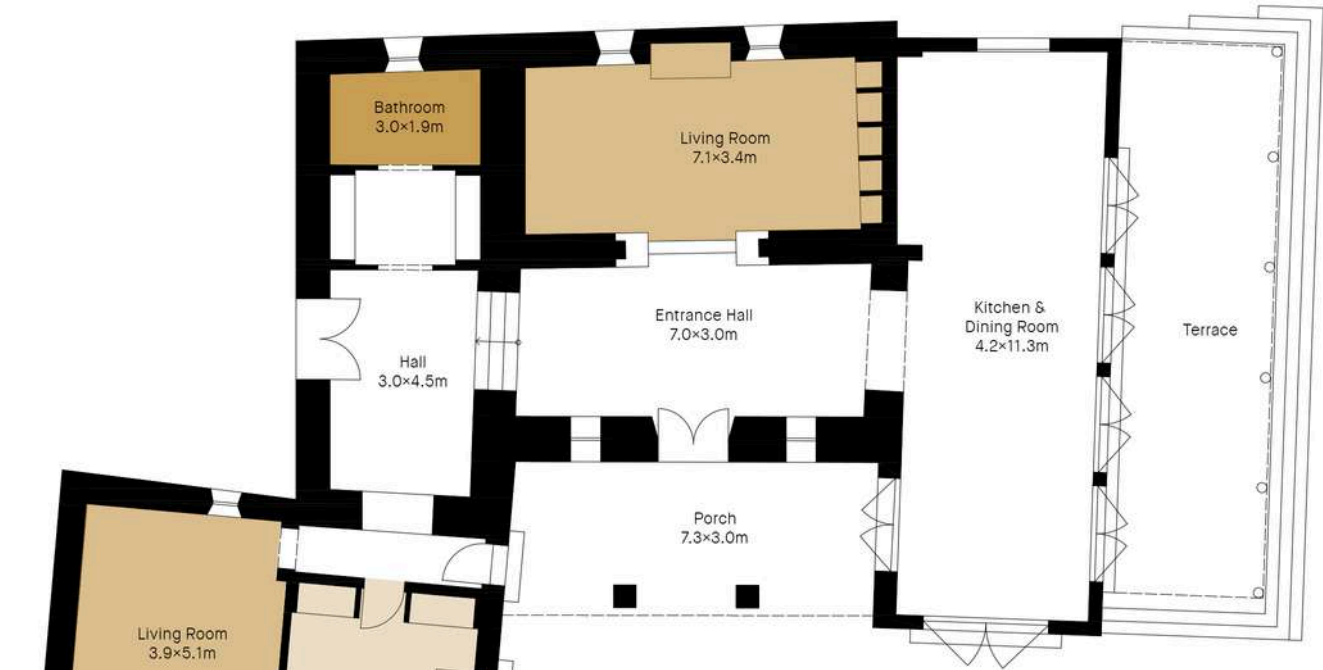




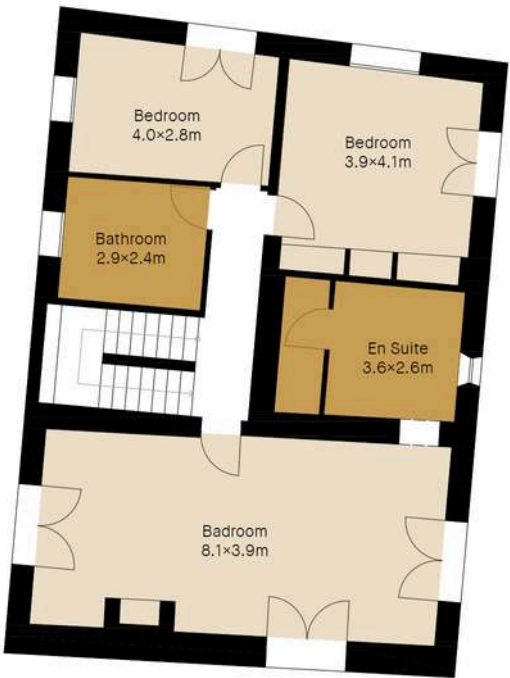




Ground Floor



First Floor







## A day in the life *at Can Citrus*

8am - Wake up and take in the views from the master suite as the morning sun creeps onto your land

10am - An invigorating swim in the 20m pool and breakfast on the terrace is the perfect way to set you up for the rest of the day

2pm - Make the short trip to La Paloma, your favourite Ibiza lunch spot for a fresh meal with friends in the shade of their garden

6pm - Back home to freshen up and get dressed up for evening with the family at one of your new favourite restaurants in Santa Gertrudis

10pm - Back to the villa for a night cap under the moonlight, whilst the children snuggle up with a movie in the cinema room





# Ibiza *Santa Gertrudis*

Where the energies of the north, south, east, and west converge, Santa Gertrudis has long been one of the island's most creative and grounded places to live.

In the 1960s, painters would trade their work for meals at Bar Costa. Today, those same paintings still hang on the walls, and the village continues to attract a community of artists, families, and islanders who value thoughtful living.

The village itself offers everything you really need. Independent shops, great schools, cafés, organic markets, and local restaurants are all within easy reach. Though more polished than its past, the spirit of Santa Gertrudis remains the same.

It is a place full of warmth, rooted in authenticity, and quietly shaping the next chapter of Ibiza life.



MAR  
LOW







## Where we feel *at home*

La Paloma - ever popular farm to table restaurant in San Lorenzo. Perfect for long lunches with friends.

Safragell - A hotel & spa within walking distance of the home. Day passes available, and also perfect to house your guests when you have one or two too many.

Santa Gertrudis - the epicentre of the island for discerning travelers and residents alike. Meet your friends, and make new ones all year round.

Juntos Farm - a working farm and now community hang-out has become a big hit with its weekend market events. The perfect place to come for fresh organic produce, and stay for the crowd

Macau - locals who know, eat at Macau. A modest looking, Italian inspired restaurant is the place to be to enjoy great food and great company long into the night.



# Connect with us

[sales.ibiza@charlesmarlow.com](mailto:sales.ibiza@charlesmarlow.com)

+34 971 636 427

[www.charlesmarlow.com](http://www.charlesmarlow.com)

