

ONE  
CROWN  
SQUARE

# ONE CROWN SQUARE

WOKING | GU21 6HR

FLEXIBLE SPACE AVAILABLE ACROSS 8 FLOORS



WORKSPACE®

# FIRST CLASS FEATURES



Providing an energy-efficient and comfortable environment, One Crown Square offers a host of premium building features:



COMFORT COOLING



PERIMETER TRUNKING



SUSPENDED CEILINGS



LED LIGHTING



PERSON LIFTS



SHOWER ROOM



BICYCLE PARKING



SUPERFAST FIBRE-OPTIC LINK



CONCIERGE SERVICE DURING BUSINESS HOURS



HIGH QUALITY KITCHENETTES



BOOKABLE MEETING ROOMS



ON-SITE CAFÉ

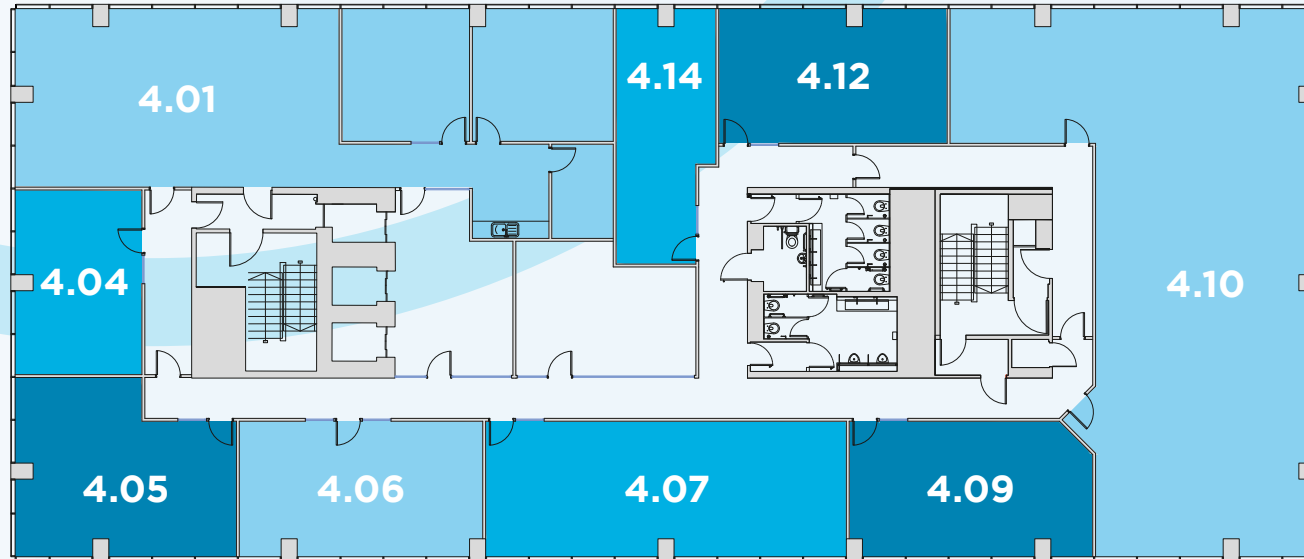


EPC BEING REASSESSED



EXCELLENT NATURAL LIGHT

# SMALL & MEDIUM SIZE UNIT OPTIONS

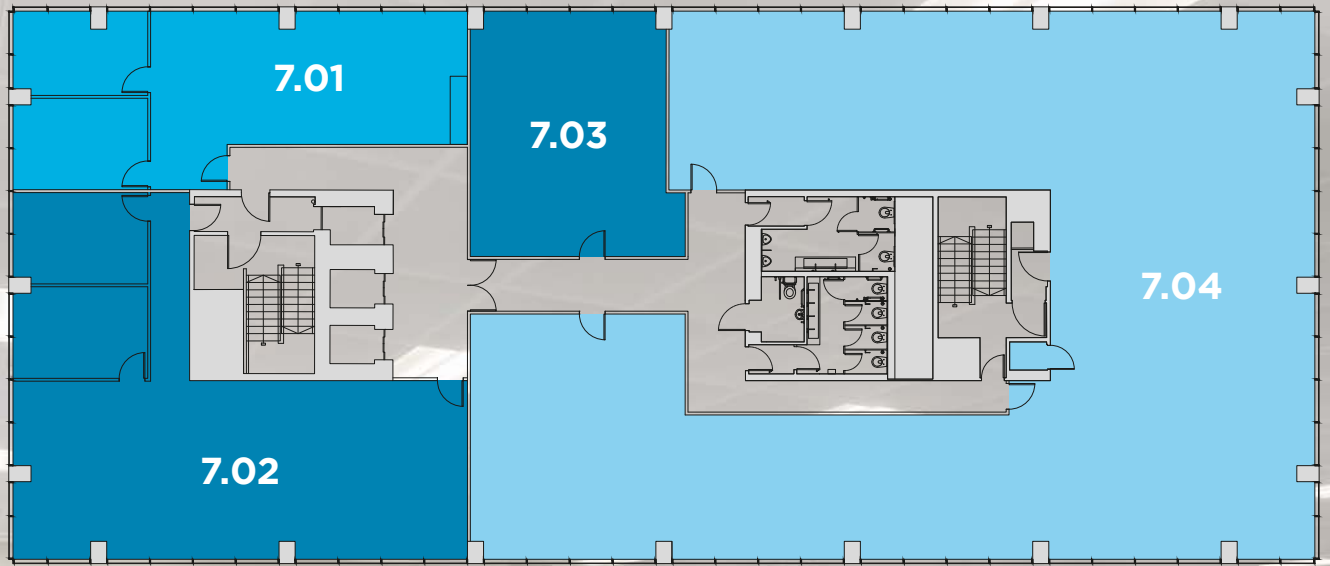


## AVAILABILITY

Suites are currently available from 312 sq ft to 4,761 sq ft.

If a specific size suite is currently not available, partitions can be moved to create a tailor made size suite to suit.

Details on request.



**LARGER**  
**UNIT OPTIONS**



# SPACE TO CONNECT

**200**  
METRES

TO MANLINE  
TRAIN  
STATION

**15**  
TRAINS

PER HOUR TO  
LONDON

**25**  
MINS

LONDON  
WATERLOO  
STATION

**4.5**  
MILES

BY CAR TO M25  
JUNCTION 11

**17**  
MILES

BY CAR TO  
HEATHROW  
AIRPORT



One Crown Square is in a prime position for occupiers to benefit from Woking's superb communications.

One Crown Square has a thriving community and is home to a diverse mix of businesses in sectors such as finance, insurance, commodities and real estate.



# CONTACT

## AGENTS



01483 446 800  
vailwilliams.com

**GEORGE O'CONNOR**  
T: 07836 544564  
E: goconnor@vailwilliams.com

**NATALIE FURTADO**  
T: 07584 034875  
E: nfurtado@vailwilliams.com



01483 300176  
owenisherwood.com

**PETER DA SILVA**  
T: 07768 146953  
E: pds@owenisherwood.com

**ALEX BELLION**  
T: 07971 756068  
E: alex@owenisherwood.com



**WORKSPACE**<sup>®</sup>

Home to London's brightest businesses

Workspace provides London commercial properties designed to support entrepreneurs and small businesses, tailored for individual business needs. As the leading commercial property company in London, Workspace owns more than 3.7 million square feet of office and studio space, providing homes for over 3,000 businesses in the capital.