



25 Drumaldrace, Blackfell, Washington, Tyne & Wear, NE37 1SR

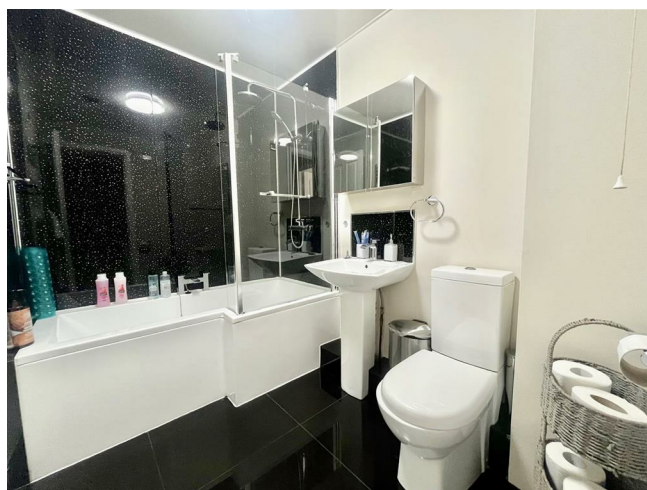
£795 Per Calendar Month





## Key features

- TOP FLOOR APARTMENT
- FURNISHED
- MODERN FITTED KITCHEN
- TWO GOOD SIZE BEDROOMS
- WELL PRESENTED BATHROOM
- DESIRABLE LOCATION
- MODERN NEUTRAL DECOR THROUGHOUT
- GREAT TRANSPORT LINKS
- ALLOCATED CAR PARKING
- VIEWING HIGHLY ADVISED



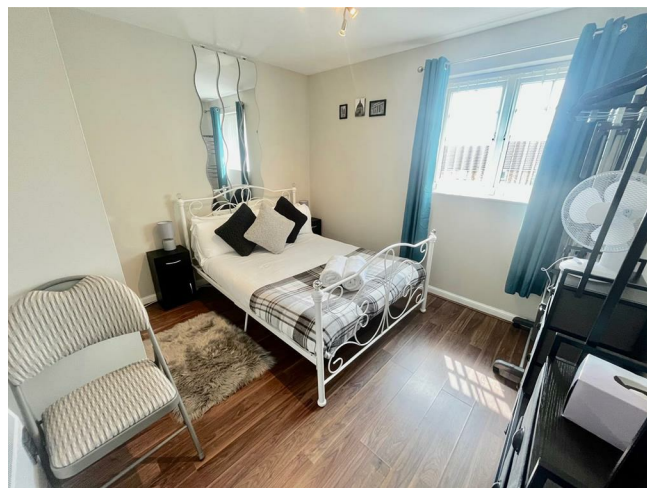
## Description

Located in the charming area of Blackfell in Washington, Drumaldrace is a delightful apartment is a gem waiting to be discovered. Situated on the top floor, this property boasts two spacious double bedrooms, perfect for a small family or professionals looking for extra space. The property is offered to the market furnished and has modern neutral decor throughout.

The property features a cosy reception room, ideal for relaxing after a long day. With a well-maintained bathroom, you'll have all the comfort you need. The allocated parking space for one vehicle ensures convenience for those with a car.

Conveniently located near the local shopping centre, you'll have easy access to a variety of shops and amenities. Whether you're looking for a peaceful retreat or a place close to the buzz of the town, this apartment offers the best of both worlds.

Don't miss out on the opportunity to make this lovely apartment your new home. Early viewing is recommended.



ENTRANCE HALL

9'3 x 5'7

LOUNGE/DINING

17'7 x 13'8

KITCHEN

8 x 6'8

BEDROOM ONE

11 x 9'10

BEDROOM TWO

10'8 x 9'9

BATHROOM

7'11 x 5'9

EXTERNAL

DISCLAIMER - LETTINGS











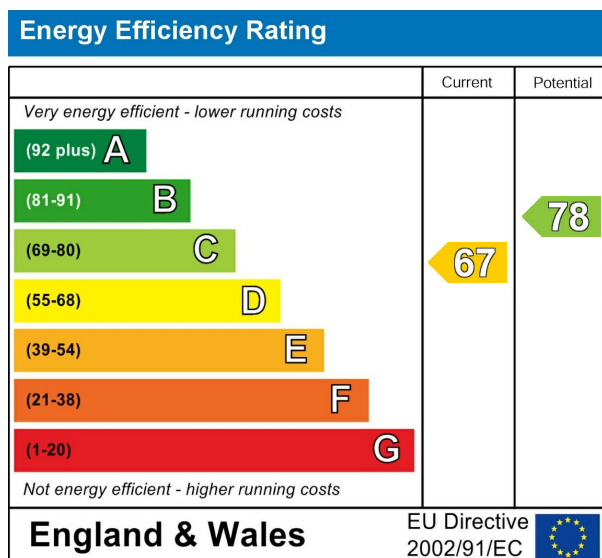
#### WE REQUIRE

One months rent in advance = £795

One months rent as a damage deposit = £795

To hold this property from other viewings while references are carried out we require one weeks rent as a holding deposit.

The particulars on these properties are set out as a general guidance for intended for tenants contracts The Agent has not tested any apparatus, equipment, fixtures and fittings or services and so cannot verify that they are in working order or fit for the purpose. Tenants should not rely on them as statements of fact, but must satisfy themselves by inspection or otherwise as to the correctness of each of them. Items shown in photographs are NOT included unless specifically mentioned within the particulars. Measurements have been taken using a laser distance meter and may be subject to a margin of error. For further information see the Consumer Protection from Unfair Trading.



212 High Street  
Gateshead  
Tyne And Wear  
NE8 1AQ  
0191 500 8 500  
info@carouselestateagents.com  
<https://www.carouselestateagents.com>

