



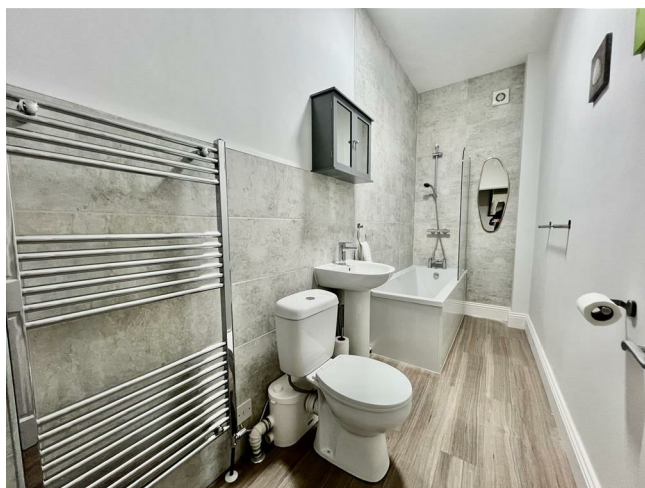
221 Windsor Avenue, Bensham, Gateshead, Tyne & Wear, NE8 4NY

Asking Price £90,000



Key features

- GROUND FLOOR FLAT
- TWO DOUBLE BEDROOMS
- FITTED KITCHEN
- MODERN BATHROOM
- RECENTLY RENOVATED
- GAS CENTRAL HEATING
- UPVC DOUBLE GLAZING
- CLOSE TO SALTWELL PARK
- NO ONWARD CHAIN
- VIEWING ADVISED



Description

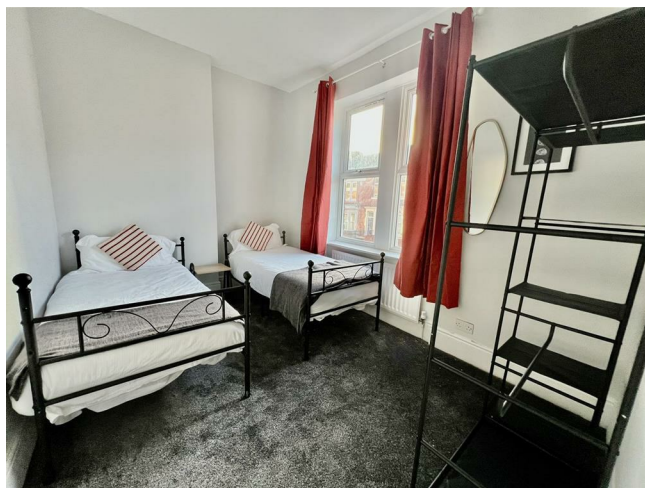
Welcome to this charming ground floor apartment located on Windsor Avenue in the desirable area of Bensham, Gateshead. This recently refurbished flat offers a modern and comfortable living space, perfect for individuals or small families seeking a convenient lifestyle.

The apartment features two spacious double bedrooms, providing ample room for relaxation and rest. The well-appointed reception room serves as a welcoming area for entertaining guests or enjoying quiet evenings at home. The property also includes a stylish bathroom, designed with contemporary fittings to enhance your daily routine.

One of the standout features of this property is its prime location. Situated close to Saltwell Park, residents can enjoy the beauty of nature and the opportunity for leisurely walks or outdoor activities just moments from their doorstep. The park is a wonderful asset for those who appreciate green spaces and community events.

Additionally, this apartment comes with the advantage of no onward chain, making the buying process straightforward and hassle-free. Whether you are a first-time buyer or looking to downsize, this property presents an excellent opportunity to secure a lovely home in a sought-after area.

In summary, this ground floor flat on Windsor Avenue is a delightful choice for anyone looking to enjoy modern living in a vibrant community. With its recent refurbishment, spacious bedrooms, and proximity to Saltwell Park, it is sure to appeal to a wide range of buyers. Do not miss the chance to make this wonderful apartment your new home.



ENTRANCE HALL

14 x 3'1

LOUNGE

14'8

KITCHEN

13'7 x 7'8

BEDROOM ONE

12'7 x 9'6

BEDROOM TWO

14'10 x 6'4

BATHROOM

12'7 x 4'6

EXTERNAL

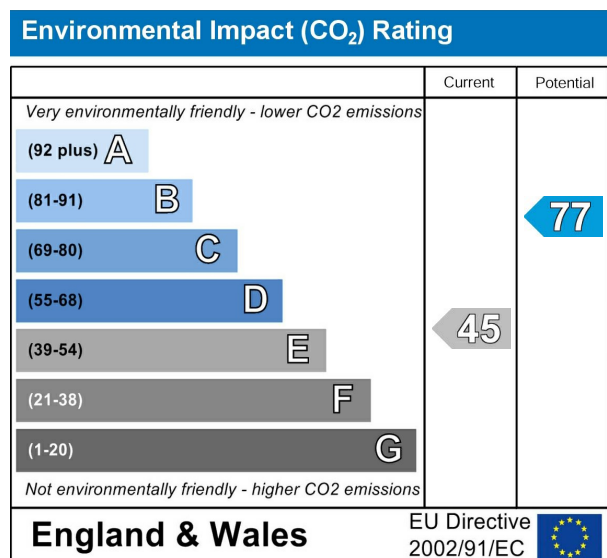
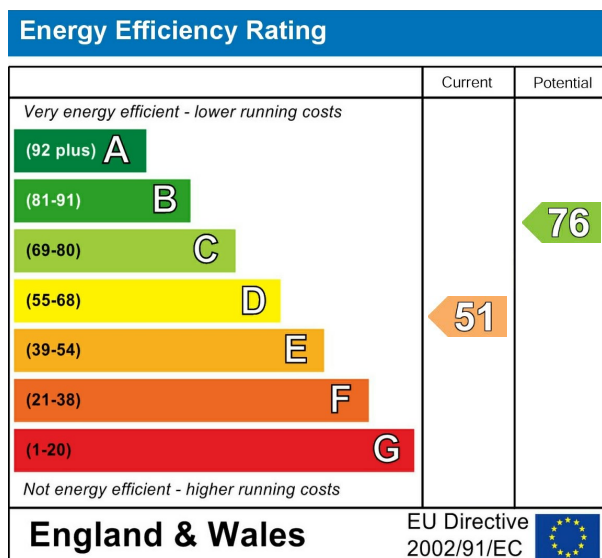
DISCLAIMER SALES







The particulars on these properties are set out as a general guidance for intended purchasers or tenants, and do not constitute part of an offer or contract. The Agent has not tested any apparatus, equipment, fixtures and fittings or services and so cannot verify that they are in working order or fit for the purpose. A Buyer is advised to obtain verification from their Solicitor or Surveyor. References to the Tenure of a Property are based on information supplied by the Seller. The Agent has not had sight of the title documents. A Buyer is advised to obtain verification from their Solicitor. All dimensions, descriptions and distances, reference to condition and necessary permissions for use and occupation, and other details are given without responsibility. Any intending purchasers or tenants should not rely on them as statements of fact, but must satisfy themselves by inspection or otherwise as to the correctness of each of them. Items shown in photographs are NOT included unless specifically mentioned within the sales particulars. They may however be available by separate negotiation. Measurements have been taken using a laser distance meter and may be subject to a margin of error. For further information see the Consumer Protection from Unfair Trading Regulations.



212 High Street
Gateshead
Tyne And Wear
NE8 1AQ
0191 500 8 500
info@carouselestateagents.com
<https://www.carouselestateagents.com>

